



SCHOOL PERFORMANCE FACT SHEETS

2017-2018

(CALIFORNIA CAMPUSES)

FOR THE FOLLOWING EDUCATIONAL PROGRAMS:

DIAGNOSTIC MEDICAL SONOGRAPHY BS DEGREE PROGRAM
DIAGNOSTIC CARDIAC SONOGRAPHY BS DEGREE PROGRAM
DIAGNOSTIC MEDICAL SONOGRAPHY AAS DEGREE PROGRAM
CARDIOVASCULAR SONOGRAPHY AAS DEGREE PROGRAM
MAGNETIC RESONANCE IMAGING AAS DEGREE PROGRAM
RN to BSN BS DEGREE COMPLETION PROGRAM (*New 2018-19*)
MAGNETIC RESONANCE IMAGING-LONG DIPLOMA PROGRAM
MAGNETIC RESONANCE IMAGING-SHORT DIPLOMA PROGRAM
CARDIOVASCULAR TECHNICIAN DIPLOMA PROGRAM
PEDIATRIC CARDIAC ULTRASOUND & CONGENITAL HEART DISEASE DIPLOMA PROGRAM
VOCATIONAL NURSING DIPLOMA PROGRAM

WEST COAST ULTRASOUND INSTITUTE

MAIN CAMPUS
291 SOUTH LA CIENEGA BOULEVARD, SUITE 500
BEVERLY HILLS, CALIFORNIA 90211

ONTARIO BRANCH CAMPUS
3700 EAST INLAND EMPIRE BOULEVARD, SUITE 235
ONTARIO, CALIFORNIA 91764



THIS PAGE IS INTENTIONALLY BLANK

WEST COAST ULTRASOUND INSTITUTE
 BEVERLY HILLS & ONTARIO CAMPUSES
 SCHOOL PERFORMANCE FACT SHEET
 2017-18 ACADEMIC YEAR



DIAGNOSTIC MEDICAL SONOGRAPHY BACHELOR OF SCIENCE DEGREE
(NEW PROGRAM. NO DATA AVAILABLE FOR THE REPORTING PERIOD)

ON-TIME COMPLETION RATES

Calendar Year	# OF STUDENTS WHO BEGAN PROGRAM ¹	STUDENTS AVAILABLE FOR GRADUATION ²	# OF ON-TIME GRADUATES ³	ON-TIME COMPLETION RATE ⁴
2015	0	0	0	0
2016	0	0	0	0

STUDENTS COMPLETING WITHIN 150% OF THE PUBLISHED PROGRAM LENGTH

Calendar Year	# OF STUDENTS WHO BEGAN PROGRAM ¹	STUDENTS AVAILABLE FOR GRADUATION ²	150% GRADUATES ⁵	150% COMPLETION RATE ⁶
2013	0	0	0	0
2014	0	0	0	0
2015	0	0	0	0
2016	0	0	0	0

STUDENT'S INITIALS: _____ DATE: _____
 INITIAL ONLY AFTER YOU HAVE HAD SUFFICIENT TIME TO
 READ AND UNDERSTAND THE INFORMATION

JOB PLACEMENT RATES

Calendar Year	# OF STUDENTS WHO BEGAN PROGRAM ¹	# OF GRADUATES ⁷	GRADUATES AVAILABLE FOR EMPLOYMENT ⁸	GRADUATES EMPLOYED IN THE FIELD ⁹	PLACEMENT RATE ¹⁰
2015	0	0	0	0	0
2016	0	0	0	0	0

YOU MAY OBTAIN FROM THE INSTITUTION A LIST OF THE EMPLOYMENT POSITIONS DETERMINED TO BE IN THE FIELD FOR WHICH A STUDENT IS RECEIVING EDUCATION AND TRAINING FROM THE OFFICE OF STUDENT SERVICES.

PART TIME VS. FULL TIME EMPLOYMENT

Calendar Year	GRADUATES EMPLOYED IN THE FIELD 20 TO 29 HOURS PER WEEK	GRADUATES EMPLOYED IN THE FIELD AT LEAST 30 HOURS PER WEEK	TOTAL GRADUATES EMPLOYED IN THE FIELD
2015	0	0	0
2016	0	0	0

SINGLE POSITION VS. CONCURRENT AGGREGATED POSITIONS

Calendar Year	GRADUATES EMPLOYED IN THE FIELD IN A SINGLE POSITION	GRADUATES EMPLOYED IN THE FIELD IN CONCURRENT AGGREGATED POSITIONS	TOTAL GRADUATES EMPLOYED IN THE FIELD
2015	0	0	0
2016	0	0	0

SELF-EMPLOYED/FREELANCE POSITIONS

Calendar Year	GRADUATES EMPLOYED WHO ARE SELF-EMPLOYED OR WORKING FREELANCE	TOTAL GRADUATES EMPLOYED IN THE FIELD
2015	0	0
2016	0	0

SCHOOL PERFORMANCE FACT SHEET DEFINITIONS:

THIS PROGRAM IS NEW. THEREFORE THE NUMBER OF STUDENTS WHO GRADUATE, THE NUMBER OF STUDENTS WHO ARE PLACED, OR THE STARTING SALARY YOU CAN EARN AFTER FINISHING THE EDUCATIONAL PROGRAM ARE UNKNOWN AT THIS TIME. INFORMATION REGARDING GENERAL SALARY AND PLACEMENT STATISTICS MAY BE AVAILABLE FROM GOVERNMENT SOURCES OR FROM THE INSTITUTION, BUT IS NOT EQUIVALENT TO ACTUAL PERFORMANCE DATA. THIS PROGRAM WAS APPROVED BY THE BUREAU ON 8/24/2015. AS OF JULY 1, 2022 TWO FULL YEARS OF DATA FOR THIS PROGRAM WILL BE AVAILABLE.

ON-TIME COMPLETION RATES

Calendar Year	# OF STUDENTS WHO BEGAN PROGRAM ¹	STUDENTS AVAILABLE FOR GRADUATION ²	# OF ON-TIME GRADUATES ³	ON-TIME COMPLETION RATE ⁴
---------------	--	--	-------------------------------------	--------------------------------------

1“NUMBER OF STUDENTS WHO BEGAN PROGRAM” IS THE NUMBER OF STUDENTS WHO BEGAN WHO ARE SCHEDULED TO COMPLETE THE PROGRAM WITHIN THE REPORTING CALENDAR YEAR.

2 “STUDENTS AVAILABLE FOR GRADUATION” IS THE NUMBER OF STUDENTS WHO BEGAN THE PROGRAM MINUS THE NUMBER OF “STUDENTS UNAVAILABLE FOR GRADUATION”, WHICH MEANS STUDENTS WHO HAVE DIED, BEEN INCARCERATED, OR CALLED TO ACTIVE MILITARY DUTY.

3“GRADUATES” IS THE NUMBER OF STUDENTS WHO COMPLETED THE PROGRAM WITHIN 100% OF THE PUBLISHED LENGTH.

4“COMPLETION RATE” IS THE NUMBER OF GRADUATES DIVIDED BY THE NUMBER OF “STUDENTS AVAILABLE FOR GRADUATION”.

STUDENTS COMPLETING WITHIN 150% OF THE PUBLISHED PROGRAM LENGTH

Calendar Year	# OF STUDENTS WHO BEGAN PROGRAM ¹	STUDENTS AVAILABLE FOR GRADUATION ²	150% GRADUATES ⁵	150% COMPLETION RATE ⁶
---------------	--	--	-----------------------------	-----------------------------------

5“150% GRADUATES RATE” IS THE NUMBER OF STUDENTS WHO COMPLETED THE PROGRAM WITHIN 101%-150% OF THE PUBLISHED PROGRAM RATE.

6“150% COMPLETION RATE” IS THE PERCENTAGE OF STUDENTS WHO COMPLETED THE PROGRAM IN THE REPORTED CALENDAR YEAR WITHIN 101% -150% OF THE PUBLISHED LENGTH.

JOB PLACEMENT RATES

Calendar Year	# OF STUDENTS WHO BEGAN PROGRAM ¹	# OF GRADUATES ⁷	GRADUATES AVAILABLE FOR EMPLOYMENT ⁸	GRADUATES EMPLOYED IN THE FIELD ⁹	PLACEMENT RATE ¹⁰
---------------	--	-----------------------------	---	--	------------------------------

7“# OF GRADUATES” IS THE NUMBER OF STUDENTS WHO COMPLETED THE PROGRAM WITHIN 100% OF THE PUBLISHED LENGTH.

8“GRADUATES AVAILABLE FOR EMPLOYMENT” MEANS THE NUMBER OF GRADUATES MINUS THE NUMBER OF GRADUATES UNAVAILABLE FOR EMPLOYMENT. GRADUATES UNAVAILABLE FOR EMPLOYMENT MEANS GRADUATES WHO HAVE DIED, BECOME INCARCERATED, ARE CALLED TO ACTIVE MILITARY DUTY, OR ARE INTERNATIONAL STUDENTS WHO DO NOT HAVE A VISA ALLOWING EMPLOYMENT.

9“GRADUATES EMPLOYED IN THE FIELD” ARE GRADUATES WHO REPORT THAT THEY ARE EMPLOYED WITHIN SIX MONTHS OF GRADUATION IN A POSITION REQUIRING THE SKILLS THEY OBTAINED THROUGH THE EDUCATION PROVIDED BY THE SCHOOL.

10“PLACEMENT RATE” IS THE NUMBER OF EMPLOYED GRADUATES DIVIDED BY THE “GRADUATES AVAILABLE FOR EMPLOYMENT”.

INSTITUTIONAL EMPLOYMENT

Calendar Year	GRADUATES EMPLOYED IN THE FIELD WHO ARE EMPLOYED BY THE INSTITUTION, AN EMPLOYER OWNED BY THIS INSTITUTION, OR AN EMPLOYER WHO SHARES OWNERSHIP WITH THE INSTITUTION	TOTAL GRADUATES EMPLOYED IN THE FIELD
2015	0	0
2016	0	0

STUDENT'S INITIALS: _____ DATE: _____
 INITIAL ONLY AFTER YOU HAVE HAD SUFFICIENT TIME TO
 READ AND UNDERSTAND THE INFORMATION

SALARY AND WAGE INFORMATION

Year	GRADUATES AVAILABLE FOR EMPLOYMENT ⁸	GRADUATES EMPLOYED IN THE FIELD ⁹	BELOW \$30,000	\$30,000 TO 34,999	\$35,000 TO 39,999	\$40,000 TO 44,999	\$45,000 TO 49,999	\$50,000 TO 54,999	ABOVE \$55,000	STUDENTS NOT REPORTING SALARY
2015	0	0	0	0	0	0	0	0	0	0
2016	0	0	0	0	0	0	0	0	0	0

STUDENT'S INITIALS: _____ DATE: _____
 INITIAL ONLY AFTER YOU HAVE HAD SUFFICIENT TIME TO
 READ AND UNDERSTAND THE INFORMATION

COST OF EDUCATIONAL PROGRAM

TOTAL CHARGES FOR THE PROGRAM FOR STUDENTS COMPLETING ON-TIME IN 2016. TOTAL CHARGES MAY BE HIGHER FOR STUDENTS THAT DO NOT COMPLETE ON-TIME.
\$65,905.00

STUDENT'S INITIALS: _____ DATE: _____
 INITIAL ONLY AFTER YOU HAVE HAD SUFFICIENT TIME TO
 READ AND UNDERSTAND THE INFORMATION

FEDERAL STUDENT LOAN DEBT AT WCUJ

% OF STUDENTS WHO DEFAULTED ON FEDERAL LOANS AT THIS SCHOOL	% OF STUDENTS ENROLLED IN 2016 WHO TOOK OUT FEDERAL LOANS TO PAY FOR THIS PROGRAM	% OF GRADUATES IN 2016 WHO TOOK OUT FEDERAL STUDENT LOANS TO PAY FOR THIS PROGRAM	AVERAGE FEDERAL LOAN DEBT OF 2016 GRADUATES WHO TOOK OUT FEDERAL LOANS AT THIS INSTITUTION
5.4%	0	0	0

STUDENT'S INITIALS: _____ DATE: _____
 INITIAL ONLY AFTER YOU HAVE HAD SUFFICIENT TIME TO
 READ AND UNDERSTAND THE INFORMATION

THIS FACT SHEET IS FILED WITH THE BUREAU FOR PRIVATE POSTSECONDARY EDUCATION. REGARDLESS OF ANY INFORMATION YOU MAY HAVE RELATING TO COMPLETION RATES, PLACEMENT RATES, STARTING SALARIES, OR LICENSE EXAM PASSAGE RATES, THIS FACT SHEET CONTAINS THE INFORMATION AS CALCULATED PURSUANT TO STATE LAW.

ANY QUESTIONS A STUDENT MAY HAVE REGARDING THIS FACT SHEET THAT HAVE NOT BEEN SATISFACTORILY ANSWERED BY THIS INSTITUTION MAY BE DIRECTED TO THE BUREAU FOR PRIVATE POSTSECONDARY EDUCATION AT 2535 CAPITOL OAKS DRIVE, SUITE 400, SACRAMENTO, CA 95833, WWW.BPPE.CA.GOV, TOLL-FREE TELEPHONE NUMBER (888) 370-7589 OR BY FAX (916) 263-1897.

 STUDENT NAME-PRINT

 STUDENT SIGNATURE

 DATE

 SCHOOL OFFICIAL

 DATE

WEST COAST ULTRASOUND INSTITUTE
291 S. LA CIENEGA BLVD., SUITE 500
BEVERLY HILLS, CA 90211
(310) 289-5123W
WW.WCUI.EDU



WEST COAST ULTRASOUND INSTITUTE
3700 E. INLAND EMPIRE BLVD., SUITE 235
ONTARIO, CA 91764
(909) 483-3808
WW.WCUI.EDU

STUDENT'S RIGHT TO CANCEL:

A STUDENT HAS THE RIGHT TO CANCEL THE ENROLLMENT AGREEMENT AND OBTAIN A REFUND OF CHARGES PAID THROUGH ATTENDANCE AT THE FIRST CLASS SESSION, OR THE SEVENTH DAY AFTER ENROLLMENT, WHICHEVER IS LATER. IF A STUDENT HAS RECEIVED FEDERAL STUDENT FINANCIAL AID FUNDS, THE STUDENT IS ENTITLED TO A REFUND OF MONEYS NOT PAID FROM FEDERAL STUDENT FINANCIAL AID PROGRAM FUNDS. TO CANCEL THIS ENROLLMENT AGREEMENT AND/OR TERMINATE THE COURSE OF STUDY, THE STUDENT MUST MAIL OR DELIVER A SIGNED AND DATED COPY OF THE CANCELLATION NOTICE (AVAILABLE IN THE REGISTRAR'S OFFICE), OR MAIL OR DELIVER ANOTHER WRITTEN NOTICE, OR SEND A TELEGRAM. IF IT IS MAILED, IT IS DEEMED EFFECTIVE WHEN IT IS DEPOSITED IN THE MAIL PROPERLY WITH PREPAID POSTAGE PAID. THE ENROLLMENT AGREEMENT MAY BE TERMINATED BY THE COLLEGE FOR UNSATISFACTORY ACADEMIC PROGRESS, POOR ATTENDANCE, USE OF CONTROLLED SUBSTANCES ON CAMPUS, CONDUCT DETRIMENTAL TO THE COLLEGE, FAILURE TO COMPLY WITH FINANCIAL AID REGULATIONS OR NON-OBSERVANCE OF OTHER STUDENT REGULATIONS. IF YOU ARE DISMISSED, YOU MAY APPEAL TO THE APPEALS COMMITTEE. A FINAL DECISION WILL BE MADE ACCORDING TO SCHOOL POLICY. MORE INFORMATION IS AVAILABLE IN THE COLLEGE'S CATALOG.

WEST COAST ULTRASOUND INSTITUTE
 BEVERLY HILLS & ONTARIO CAMPUSES
 SCHOOL PERFORMANCE FACT SHEET
 2017-18 ACADEMIC YEAR



DIAGNOSTIC CARDIOVASCULAR SONOGRAPHY BACHELOR OF SCIENCE DEGREE
 (NEW PROGRAM. NO DATA AVAILABLE FOR THE REPORTING PERIOD)

ON-TIME COMPLETION RATES

Calendar Year	# OF STUDENTS WHO BEGAN PROGRAM ¹	STUDENTS AVAILABLE FOR GRADUATION ²	# OF ON-TIME GRADUATES ³	ON-TIME COMPLETION RATE ⁴
2015	0	0	0	0
2016	0	0	0	0

STUDENTS COMPLETING WITHIN 150% OF THE PUBLISHED PROGRAM LENGTH

Calendar Year	# OF STUDENTS WHO BEGAN PROGRAM ¹	STUDENTS AVAILABLE FOR GRADUATION ²	150% GRADUATES ⁵	150% COMPLETION RATE ⁶
2013	0	0	0	0
2014	0	0	0	0
2015	0	0	0	0
2016	0	0	0	0

STUDENT'S INITIALS: _____ DATE: _____
 INITIAL ONLY AFTER YOU HAVE HAD SUFFICIENT TIME TO
 READ AND UNDERSTAND THE INFORMATION

JOB PLACEMENT RATES

Calendar Year	# OF STUDENTS WHO BEGAN PROGRAM ¹	# OF GRADUATES ⁷	GRADUATES AVAILABLE FOR EMPLOYMENT ⁸	GRADUATES EMPLOYED IN THE FIELD ⁹	PLACEMENT RATE ¹⁰
2015	0	0	0	0	0
2016	0	0	0	0	0

YOU MAY OBTAIN FROM THE INSTITUTION A LIST OF THE EMPLOYMENT POSITIONS DETERMINED TO BE IN THE FIELD FOR WHICH A STUDENT IS RECEIVING EDUCATION AND TRAINING FROM THE OFFICE OF STUDENT SERVICES.

PART TIME VS. FULL TIME EMPLOYMENT

Calendar Year	GRADUATES EMPLOYED IN THE FIELD 20 TO 29 HOURS PER WEEK	GRADUATES EMPLOYED IN THE FIELD AT LEAST 30 HOURS PER WEEK	TOTAL GRADUATES EMPLOYED IN THE FIELD
2015	0	0	0
2016	0	0	0

SINGLE POSITION VS. CONCURRENT AGGREGATED POSITIONS

Calendar Year	GRADUATES EMPLOYED IN THE FIELD IN A SINGLE POSITION	GRADUATES EMPLOYED IN THE FIELD IN CONCURRENT AGGREGATED POSITIONS	TOTAL GRADUATES EMPLOYED IN THE FIELD
2015	0	0	0
2016	0	0	0

SELF-EMPLOYED/FREELANCE POSITIONS

Calendar Year	GRADUATES EMPLOYED WHO ARE SELF-EMPLOYED OR WORKING FREELANCE	TOTAL GRADUATES EMPLOYED IN THE FIELD
2015	0	0
2016	0	0

SCHOOL PERFORMANCE FACT SHEET DEFINITIONS:

THIS PROGRAM IS NEW. THEREFORE THE NUMBER OF STUDENTS WHO GRADUATE, THE NUMBER OF STUDENTS WHO ARE PLACED, OR THE STARTING SALARY YOU CAN EARN AFTER FINISHING THE EDUCATIONAL PROGRAM ARE UNKNOWN AT THIS TIME. INFORMATION REGARDING GENERAL SALARY AND PLACEMENT STATISTICS MAY BE AVAILABLE FROM GOVERNMENT SOURCES OR FROM THE INSTITUTION, BUT IS NOT EQUIVALENT TO ACTUAL PERFORMANCE DATA. THIS PROGRAM WAS APPROVED BY THE BUREAU ON 9/25/2014. AS OF JULY 1, 2022 TWO FULL YEARS OF DATA FOR THIS PROGRAM WILL BE AVAILABLE.

ON-TIME COMPLETION RATES

Calendar Year	# OF STUDENTS WHO BEGAN PROGRAM ¹	STUDENTS AVAILABLE FOR GRADUATION ²	# OF ON-TIME GRADUATES ³	ON-TIME COMPLETION RATE ⁴
---------------	--	--	-------------------------------------	--------------------------------------

1“NUMBER OF STUDENTS WHO BEGAN PROGRAM” IS THE NUMBER OF STUDENTS WHO BEGAN WHO ARE SCHEDULED TO COMPLETE THE PROGRAM WITHIN THE REPORTING CALENDAR YEAR.

2 “STUDENTS AVAILABLE FOR GRADUATION” IS THE NUMBER OF STUDENTS WHO BEGAN THE PROGRAM MINUS THE NUMBER OF “STUDENTS UNAVAILABLE FOR GRADUATION”, WHICH MEANS STUDENTS WHO HAVE DIED, BEEN INCARCERATED, OR CALLED TO ACTIVE MILITARY DUTY.

3“GRADUATES” IS THE NUMBER OF STUDENTS WHO COMPLETED THE PROGRAM WITHIN 100% OF THE PUBLISHED LENGTH.

4“COMPLETION RATE” IS THE NUMBER OF GRADUATES DIVIDED BY THE NUMBER OF “STUDENTS AVAILABLE FOR GRADUATION”.

STUDENTS COMPLETING WITHIN 150% OF THE PUBLISHED PROGRAM LENGTH

Calendar Year	# OF STUDENTS WHO BEGAN PROGRAM ¹	STUDENTS AVAILABLE FOR GRADUATION ²	150% GRADUATES ⁵	150% COMPLETION RATE ⁶
---------------	--	--	-----------------------------	-----------------------------------

5“150% GRADUATES RATE” IS THE NUMBER OF STUDENTS WHO COMPLETED THE PROGRAM WITHIN 101%-150% OF THE PUBLISHED PROGRAM RATE.

6“150% COMPLETION RATE” IS THE PERCENTAGE OF STUDENTS WHO COMPLETED THE PROGRAM IN THE REPORTED CALENDAR YEAR WITHIN 101% -150% OF THE PUBLISHED LENGTH.

JOB PLACEMENT RATES

Calendar Year	# OF STUDENTS WHO BEGAN PROGRAM ¹	# OF GRADUATES ⁷	GRADUATES AVAILABLE FOR EMPLOYMENT ⁸	GRADUATES EMPLOYED IN THE FIELD ⁹	PLACEMENT RATE ¹⁰
---------------	--	-----------------------------	---	--	------------------------------

7“# OF GRADUATES” IS THE NUMBER OF STUDENTS WHO COMPLETED THE PROGRAM WITHIN 100% OF THE PUBLISHED LENGTH.

8“GRADUATES AVAILABLE FOR EMPLOYMENT” MEANS THE NUMBER OF GRADUATES MINUS THE NUMBER OF GRADUATES UNAVAILABLE FOR EMPLOYMENT. GRADUATES UNAVAILABLE FOR EMPLOYMENT MEANS GRADUATES WHO HAVE DIED, BECOME INCARCERATED, ARE CALLED TO ACTIVE MILITARY DUTY, OR ARE INTERNATIONAL STUDENTS WHO DO NOT HAVE A VISA ALLOWING EMPLOYMENT.

9“GRADUATES EMPLOYED IN THE FIELD” ARE GRADUATES WHO REPORT THAT THEY ARE EMPLOYED WITHIN SIX MONTHS OF GRADUATION IN A POSITION REQUIRING THE SKILLS THEY OBTAINED THROUGH THE EDUCATION PROVIDED BY THE SCHOOL.

10“PLACEMENT RATE” IS THE NUMBER OF EMPLOYED GRADUATES DIVIDED BY THE “GRADUATES AVAILABLE FOR EMPLOYMENT”.

INSTITUTIONAL EMPLOYMENT

Calendar Year	GRADUATES EMPLOYED IN THE FIELD WHO ARE EMPLOYED BY THE INSTITUTION, AN EMPLOYER OWNED BY THIS INSTITUTION, OR AN EMPLOYER WHO SHARES OWNERSHIP WITH THE INSTITUTION	TOTAL GRADUATES EMPLOYED IN THE FIELD
2015	0	0
2016	0	0

STUDENT'S INITIALS: _____ DATE: _____
 INITIAL ONLY AFTER YOU HAVE HAD SUFFICIENT TIME TO
 READ AND UNDERSTAND THE INFORMATION

SALARY AND WAGE INFORMATION

Year	GRADUATES AVAILABLE FOR EMPLOYMENT ⁸	GRADUATES EMPLOYED IN THE FIELD ⁹	BELOW \$30,000	\$30,000 TO 34,999	\$35,000 TO 39,999	\$40,000 TO 44,999	\$45,000 TO 49,999	\$50,000 TO 54,999	ABOVE \$55,000	STUDENTS NOT REPORTING SALARY
2015	0	0	0	0	0	0	0	0	0	0
2016	0	0	0	0	0	0	0	0	0	0

STUDENT'S INITIALS: _____ DATE: _____
 INITIAL ONLY AFTER YOU HAVE HAD SUFFICIENT TIME TO
 READ AND UNDERSTAND THE INFORMATION

COST OF EDUCATIONAL PROGRAM

TOTAL CHARGES FOR THE PROGRAM FOR STUDENTS COMPLETING ON-TIME IN 2016. TOTAL CHARGES MAY BE HIGHER FOR STUDENTS THAT DO NOT COMPLETE ON-TIME.
\$65,130.00

STUDENT'S INITIALS: _____ DATE: _____
 INITIAL ONLY AFTER YOU HAVE HAD SUFFICIENT TIME TO
 READ AND UNDERSTAND THE INFORMATION

FEDERAL STUDENT LOAN DEBT AT WCUI

% OF STUDENTS WHO DEFAULTED ON FEDERAL LOANS AT THIS SCHOOL	% OF STUDENTS ENROLLED IN 2016 WHO TOOK OUT FEDERAL LOANS TO PAY FOR THIS PROGRAM	% OF GRADUATES IN 2016 WHO TOOK OUT FEDERAL STUDENT LOANS TO PAY FOR THIS PROGRAM	AVERAGE FEDERAL LOAN DEBT OF 2016 GRADUATES WHO TOOK OUT FEDERAL LOANS AT THIS INSTITUTION
5.4%	0	0	0

STUDENT'S INITIALS: _____ DATE: _____
 INITIAL ONLY AFTER YOU HAVE HAD SUFFICIENT TIME TO
 READ AND UNDERSTAND THE INFORMATION

THIS FACT SHEET IS FILED WITH THE BUREAU FOR PRIVATE POSTSECONDARY EDUCATION. REGARDLESS OF ANY INFORMATION YOU MAY HAVE RELATING TO COMPLETION RATES, PLACEMENT RATES, STARTING SALARIES, OR LICENSE EXAM PASSAGE RATES, THIS FACT SHEET CONTAINS THE INFORMATION AS CALCULATED PURSUANT TO STATE LAW.

ANY QUESTIONS A STUDENT MAY HAVE REGARDING THIS FACT SHEET THAT HAVE NOT BEEN SATISFACTORILY ANSWERED BY THIS INSTITUTION MAY BE DIRECTED TO THE BUREAU FOR PRIVATE POSTSECONDARY EDUCATION AT 2535 CAPITOL OAKS DRIVE, SUITE 400, SACRAMENTO, CA 95833, WWW.BPPE.CA.GOV, TOLL-FREE TELEPHONE NUMBER (888) 370-7589 OR BY FAX (916) 263-1897.

 STUDENT NAME-PRINT

 STUDENT SIGNATURE

 DATE

 SCHOOL OFFICIAL

 DATE

WEST COAST ULTRASOUND INSTITUTE
291 S. LA CIENEGA BLVD., SUITE 500
BEVERLY HILLS, CA 90211
(310) 289-5123W
WW.WCUI.EDU



WEST COAST ULTRASOUND INSTITUTE
3700 E. INLAND EMPIRE BLVD., SUITE 235
ONTARIO, CA 91764
(909) 483-3808
WW.WCUI.EDU

STUDENT'S RIGHT TO CANCEL:

A STUDENT HAS THE RIGHT TO CANCEL THE ENROLLMENT AGREEMENT AND OBTAIN A REFUND OF CHARGES PAID THROUGH ATTENDANCE AT THE FIRST CLASS SESSION, OR THE SEVENTH DAY AFTER ENROLLMENT, WHICHEVER IS LATER. IF A STUDENT HAS RECEIVED FEDERAL STUDENT FINANCIAL AID FUNDS, THE STUDENT IS ENTITLED TO A REFUND OF MONEYS NOT PAID FROM FEDERAL STUDENT FINANCIAL AID PROGRAM FUNDS. TO CANCEL THIS ENROLLMENT AGREEMENT AND/OR TERMINATE THE COURSE OF STUDY, THE STUDENT MUST MAIL OR DELIVER A SIGNED AND DATED COPY OF THE CANCELLATION NOTICE (AVAILABLE IN THE REGISTRAR'S OFFICE), OR MAIL OR DELIVER ANOTHER WRITTEN NOTICE, OR SEND A TELEGRAM. IF IT IS MAILED, IT IS DEEMED EFFECTIVE WHEN IT IS DEPOSITED IN THE MAIL PROPERLY WITH PREPAID POSTAGE PAID. THE ENROLLMENT AGREEMENT MAY BE TERMINATED BY THE COLLEGE FOR UNSATISFACTORY ACADEMIC PROGRESS, POOR ATTENDANCE, USE OF CONTROLLED SUBSTANCES ON CAMPUS, CONDUCT DETRIMENTAL TO THE COLLEGE, FAILURE TO COMPLY WITH FINANCIAL AID REGULATIONS OR NON-OBSERVANCE OF OTHER STUDENT REGULATIONS. IF YOU ARE DISMISSED, YOU MAY APPEAL TO THE APPEALS COMMITTEE. A FINAL DECISION WILL BE MADE ACCORDING TO SCHOOL POLICY. MORE INFORMATION IS AVAILABLE IN THE COLLEGE'S CATALOG.

WEST COAST ULTRASOUND INSTITUTE
 BEVERLY HILLS & ONTARIO CAMPUSES
 SCHOOL PERFORMANCE FACT SHEET
 2017-18 ACADEMIC YEAR



DIAGNOSTIC MEDICAL SONOGRAPHY ACADEMIC ASSOCIATE OF SCIENCE DEGREE
(NEW PROGRAM. NO DATA AVAILABLE FOR THE REPORTING PERIOD)

ON-TIME COMPLETION RATES

Calendar Year	# OF STUDENTS WHO BEGAN PROGRAM ¹	STUDENTS AVAILABLE FOR GRADUATION ²	# OF ON-TIME GRADUATES ³	ON-TIME COMPLETION RATE ⁴
2015	0	0	0	0
2016	0	0	0	0

STUDENTS COMPLETING WITHIN 150% OF THE PUBLISHED PROGRAM LENGTH

Calendar Year	# OF STUDENTS WHO BEGAN PROGRAM ¹	STUDENTS AVAILABLE FOR GRADUATION ²	150% GRADUATES ⁵	150% COMPLETION RATE ⁶
2012	0	0	0	0
2013	0	0	0	0
2015	0	0	0	0
2016	0	0	0	0

STUDENT'S INITIALS: _____ DATE: _____
 INITIAL ONLY AFTER YOU HAVE HAD SUFFICIENT TIME TO
 READ AND UNDERSTAND THE INFORMATION

JOB PLACEMENT RATES

Calendar Year	# OF STUDENTS WHO BEGAN PROGRAM ¹	# OF GRADUATES ⁷	GRADUATES AVAILABLE FOR EMPLOYMENT ⁸	GRADUATES EMPLOYED IN THE FIELD ⁹	PLACEMENT RATE ¹⁰
2015	0	0	0	0	0
2016	0	0	0	0	0

YOU MAY OBTAIN FROM THE INSTITUTION A LIST OF THE EMPLOYMENT POSITIONS DETERMINED TO BE IN THE FIELD FOR WHICH A STUDENT IS RECEIVING EDUCATION AND TRAINING FROM THE OFFICE OF STUDENT SERVICES.

PART TIME VS. FULL TIME EMPLOYMENT

Calendar Year	GRADUATES EMPLOYED IN THE FIELD 20 TO 29 HOURS PER WEEK	GRADUATES EMPLOYED IN THE FIELD AT LEAST 30 HOURS PER WEEK	TOTAL GRADUATES EMPLOYED IN THE FIELD
2015	0	0	0
2016	0	0	0

SINGLE POSITION VS. CONCURRENT AGGREGATED POSITIONS

Calendar Year	GRADUATES EMPLOYED IN THE FIELD IN A SINGLE POSITION	GRADUATES EMPLOYED IN THE FIELD IN CONCURRENT AGGREGATED POSITIONS	TOTAL GRADUATES EMPLOYED IN THE FIELD
2015	0	0	0
2016	0	0	0

SELF-EMPLOYED/FREELANCE POSITIONS

Calendar Year	GRADUATES EMPLOYED WHO ARE SELF-EMPLOYED OR WORKING FREELANCE	TOTAL GRADUATES EMPLOYED IN THE FIELD
2015	0	0
2016	0	0

SCHOOL PERFORMANCE FACT SHEET DEFINITIONS:

THIS PROGRAM IS NEW. THEREFORE THE NUMBER OF STUDENTS WHO GRADUATE, THE NUMBER OF STUDENTS WHO ARE PLACED, OR THE STARTING SALARY YOU CAN EARN AFTER FINISHING THE EDUCATIONAL PROGRAM ARE UNKNOWN AT THIS TIME. INFORMATION REGARDING GENERAL SALARY AND PLACEMENT STATISTICS MAY BE AVAILABLE FROM GOVERNMENT SOURCES OR FROM THE INSTITUTION, BUT IS NOT EQUIVALENT TO ACTUAL PERFORMANCE DATA. THIS PROGRAM WAS APPROVED BY THE BUREAU ON 12/2015. AS OF JULY 1, 2019 TWO FULL YEARS OF DATA FOR THIS PROGRAM WILL BE AVAILABLE.

ON-TIME COMPLETION RATES

Calendar Year	# OF STUDENTS WHO BEGAN PROGRAM ¹	STUDENTS AVAILABLE FOR GRADUATION ²	# OF ON-TIME GRADUATES ³	ON-TIME COMPLETION RATE ⁴
---------------	--	--	-------------------------------------	--------------------------------------

1“NUMBER OF STUDENTS WHO BEGAN PROGRAM” IS THE NUMBER OF STUDENTS WHO BEGAN WHO ARE SCHEDULED TO COMPLETE THE PROGRAM WITHIN THE REPORTING CALENDAR YEAR.

2 “STUDENTS AVAILABLE FOR GRADUATION” IS THE NUMBER OF STUDENTS WHO BEGAN THE PROGRAM MINUS THE NUMBER OF “STUDENTS UNAVAILABLE FOR GRADUATION”, WHICH MEANS STUDENTS WHO HAVE DIED, BEEN INCARCERATED, OR CALLED TO ACTIVE MILITARY DUTY.

3“GRADUATES” IS THE NUMBER OF STUDENTS WHO COMPLETED THE PROGRAM WITHIN 100% OF THE PUBLISHED LENGTH.

4“COMPLETION RATE” IS THE NUMBER OF GRADUATES DIVIDED BY THE NUMBER OF “STUDENTS AVAILABLE FOR GRADUATION”.

STUDENTS COMPLETING WITHIN 150% OF THE PUBLISHED PROGRAM LENGTH

Calendar Year	# OF STUDENTS WHO BEGAN PROGRAM ¹	STUDENTS AVAILABLE FOR GRADUATION ²	150% GRADUATES ⁵	150% COMPLETION RATE ⁶
---------------	--	--	-----------------------------	-----------------------------------

5“150% GRADUATES RATE” IS THE NUMBER OF STUDENTS WHO COMPLETED THE PROGRAM WITHIN 101%-150% OF THE PUBLISHED PROGRAM RATE.

6“150% COMPLETION RATE” IS THE PERCENTAGE OF STUDENTS WHO COMPLETED THE PROGRAM IN THE REPORTED CALENDAR YEAR WITHIN 101% -150% OF THE PUBLISHED LENGTH.

JOB PLACEMENT RATES

Calendar Year	# OF STUDENTS WHO BEGAN PROGRAM ¹	# OF GRADUATES ⁷	GRADUATES AVAILABLE FOR EMPLOYMENT ⁸	GRADUATES EMPLOYED IN THE FIELD ⁹	PLACEMENT RATE ¹⁰
---------------	--	-----------------------------	---	--	------------------------------

7“# OF GRADUATES” IS THE NUMBER OF STUDENTS WHO COMPLETED THE PROGRAM WITHIN 100% OF THE PUBLISHED LENGTH.

8“GRADUATES AVAILABLE FOR EMPLOYMENT” MEANS THE NUMBER OF GRADUATES MINUS THE NUMBER OF GRADUATES UNAVAILABLE FOR EMPLOYMENT. GRADUATES UNAVAILABLE FOR EMPLOYMENT MEANS GRADUATES WHO HAVE DIED, BECOME INCARCERATED, ARE CALLED TO ACTIVE MILITARY DUTY, OR ARE INTERNATIONAL STUDENTS WHO DO NOT HAVE A VISA ALLOWING EMPLOYMENT.

9“GRADUATES EMPLOYED IN THE FIELD” ARE GRADUATES WHO REPORT THAT THEY ARE EMPLOYED WITHIN SIX MONTHS OF GRADUATION IN A POSITION REQUIRING THE SKILLS THEY OBTAINED THROUGH THE EDUCATION PROVIDED BY THE SCHOOL.

10“PLACEMENT RATE” IS THE NUMBER OF EMPLOYED GRADUATES DIVIDED BY THE “GRADUATES AVAILABLE FOR EMPLOYMENT”.

INSTITUTIONAL EMPLOYMENT

Calendar Year	GRADUATES EMPLOYED IN THE FIELD WHO ARE EMPLOYED BY THE INSTITUTION, AN EMPLOYER OWNED BY THIS INSTITUTION, OR AN EMPLOYER WHO SHARES OWNERSHIP WITH THE INSTITUTION	TOTAL GRADUATES EMPLOYED IN THE FIELD
2015	0	0
2016	0	0

STUDENT'S INITIALS: _____ DATE: _____
 INITIAL ONLY AFTER YOU HAVE HAD SUFFICIENT TIME TO
 READ AND UNDERSTAND THE INFORMATION

SALARY AND WAGE INFORMATION

Year	GRADUATES AVAILABLE FOR EMPLOYMENT ⁸	GRADUATES EMPLOYED IN THE FIELD ⁹	BELOW \$30,000	\$30,000 TO 34,999	\$35,000 TO 39,999	\$40,000 TO 44,999	\$45,000 TO 49,999	\$50,000 TO 54,999	ABOVE \$55,000	STUDENTS NOT REPORTING SALARY
2015	0	0	0	0	0	0	0	0	0	0
2016	0	0	0	0	0	0	0	0	0	0

STUDENT'S INITIALS: _____ DATE: _____
 INITIAL ONLY AFTER YOU HAVE HAD SUFFICIENT TIME TO
 READ AND UNDERSTAND THE INFORMATION

COST OF EDUCATIONAL PROGRAM

TOTAL CHARGES FOR THE PROGRAM FOR STUDENTS COMPLETING ON-TIME IN 2016. TOTAL CHARGES MAY BE HIGHER FOR STUDENTS THAT DO NOT COMPLETE ON-TIME.
\$38,738.00

STUDENT'S INITIALS: _____ DATE: _____
 INITIAL ONLY AFTER YOU HAVE HAD SUFFICIENT TIME TO
 READ AND UNDERSTAND THE INFORMATION

FEDERAL STUDENT LOAN DEBT AT WCU

% OF STUDENTS WHO DEFAULTED ON FEDERAL LOANS AT THIS SCHOOL	% OF STUDENTS ENROLLED IN 2016 WHO TOOK OUT FEDERAL LOANS TO PAY FOR THIS PROGRAM	% OF GRADUATES IN 2016 WHO TOOK OUT FEDERAL STUDENT LOANS TO PAY FOR THIS PROGRAM	AVERAGE FEDERAL LOAN DEBT OF 2016 GRADUATES WHO TOOK OUT FEDERAL LOANS AT THIS INSTITUTION
5.4%	0	0	0

STUDENT'S INITIALS: _____ DATE: _____
 INITIAL ONLY AFTER YOU HAVE HAD SUFFICIENT TIME TO
 READ AND UNDERSTAND THE INFORMATION

THIS FACT SHEET IS FILED WITH THE BUREAU FOR PRIVATE POSTSECONDARY EDUCATION. REGARDLESS OF ANY INFORMATION YOU MAY HAVE RELATING TO COMPLETION RATES, PLACEMENT RATES, STARTING SALARIES, OR LICENSE EXAM PASSAGE RATES, THIS FACT SHEET CONTAINS THE INFORMATION AS CALCULATED PURSUANT TO STATE LAW.

ANY QUESTIONS A STUDENT MAY HAVE REGARDING THIS FACT SHEET THAT HAVE NOT BEEN SATISFACTORILY ANSWERED BY THIS INSTITUTION MAY BE DIRECTED TO THE BUREAU FOR PRIVATE POSTSECONDARY EDUCATION AT 2535 CAPITOL OAKS DRIVE, SUITE 400, SACRAMENTO, CA 95833, WWW.BPPE.CA.GOV, TOLL-FREE TELEPHONE NUMBER (888) 370-7589 OR BY FAX (916) 263-1897.

 STUDENT NAME-PRINT

 STUDENT SIGNATURE

 DATE

 SCHOOL OFFICIAL

 DATE

WEST COAST ULTRASOUND INSTITUTE
291 S. LA CIENEGA BLVD., SUITE 500
BEVERLY HILLS, CA 90211
(310) 289-5123W
WW.WCUI.EDU

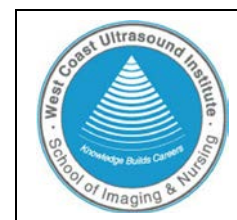


WEST COAST ULTRASOUND INSTITUTE
3700 E. INLAND EMPIRE BLVD., SUITE 235
ONTARIO, CA 91764
(909) 483-3808
WW.WCUI.EDU

STUDENT'S RIGHT TO CANCEL:

A STUDENT HAS THE RIGHT TO CANCEL THE ENROLLMENT AGREEMENT AND OBTAIN A REFUND OF CHARGES PAID THROUGH ATTENDANCE AT THE FIRST CLASS SESSION, OR THE SEVENTH DAY AFTER ENROLLMENT, WHICHEVER IS LATER. IF A STUDENT HAS RECEIVED FEDERAL STUDENT FINANCIAL AID FUNDS, THE STUDENT IS ENTITLED TO A REFUND OF MONEYS NOT PAID FROM FEDERAL STUDENT FINANCIAL AID PROGRAM FUNDS. TO CANCEL THIS ENROLLMENT AGREEMENT AND/OR TERMINATE THE COURSE OF STUDY, THE STUDENT MUST MAIL OR DELIVER A SIGNED AND DATED COPY OF THE CANCELLATION NOTICE (AVAILABLE IN THE REGISTRAR'S OFFICE), OR MAIL OR DELIVER ANOTHER WRITTEN NOTICE, OR SEND A TELEGRAM. IF IT IS MAILED, IT IS DEEMED EFFECTIVE WHEN IT IS DEPOSITED IN THE MAIL PROPERLY WITH PREPAID POSTAGE PAID. THE ENROLLMENT AGREEMENT MAY BE TERMINATED BY THE COLLEGE FOR UNSATISFACTORY ACADEMIC PROGRESS, POOR ATTENDANCE, USE OF CONTROLLED SUBSTANCES ON CAMPUS, CONDUCT DETRIMENTAL TO THE COLLEGE, FAILURE TO COMPLY WITH FINANCIAL AID REGULATIONS OR NON-OBSERVANCE OF OTHER STUDENT REGULATIONS. IF YOU ARE DISMISSED, YOU MAY APPEAL TO THE APPEALS COMMITTEE. A FINAL DECISION WILL BE MADE ACCORDING TO SCHOOL POLICY. MORE INFORMATION IS AVAILABLE IN THE COLLEGE'S CATALOG.

WEST COAST ULTRASOUND INSTITUTE
 BEVERLY HILLS & ONTARIO CAMPUSES
 SCHOOL PERFORMANCE FACT SHEET
 2017-18 ACADEMIC YEAR



CARDIOVASCULAR SONOGRAPHY ACADEMIC ASSOCIATE OF SCIENCE DEGREE
 (NEW PROGRAM. NO DATA AVAILABLE FOR THE REPORTING PERIOD)

ON-TIME COMPLETION RATES

Calendar Year	# OF STUDENTS WHO BEGAN PROGRAM ¹	STUDENTS AVAILABLE FOR GRADUATION ²	# OF ON-TIME GRADUATES ³	ON-TIME COMPLETION RATE ⁴
2015	0	0	0	0
2016	0	0	0	0

STUDENTS COMPLETING WITHIN 150% OF THE PUBLISHED PROGRAM LENGTH

Calendar Year	# OF STUDENTS WHO BEGAN PROGRAM ¹	STUDENTS AVAILABLE FOR GRADUATION ²	150% GRADUATES ⁵	150% COMPLETION RATE ⁶
2013	0	0	0	0
2014	0	0	0	0
2015	0	0	0	0
2016	0	0	0	0

STUDENT'S INITIALS: _____ DATE: _____
 INITIAL ONLY AFTER YOU HAVE HAD SUFFICIENT TIME TO
 READ AND UNDERSTAND THE INFORMATION

JOB PLACEMENT RATES

Calendar Year	# OF STUDENTS WHO BEGAN PROGRAM ¹	# OF GRADUATES ⁷	GRADUATES AVAILABLE FOR EMPLOYMENT ⁸	GRADUATES EMPLOYED IN THE FIELD ⁹	PLACEMENT RATE ¹⁰
2015	0	0	0	0	0
2016	0	0	0	0	0

YOU MAY OBTAIN FROM THE INSTITUTION A LIST OF THE EMPLOYMENT POSITIONS DETERMINED TO BE IN THE FIELD FOR WHICH A STUDENT IS RECEIVING EDUCATION AND TRAINING FROM THE OFFICE OF STUDENT SERVICES.

PART TIME VS. FULL TIME EMPLOYMENT

Calendar Year	GRADUATES EMPLOYED IN THE FIELD 20 TO 29 HOURS PER WEEK	GRADUATES EMPLOYED IN THE FIELD AT LEAST 30 HOURS PER WEEK	TOTAL GRADUATES EMPLOYED IN THE FIELD
2015	0	0	0
2016	0	0	0

SINGLE POSITION VS. CONCURRENT AGGREGATED POSITIONS

Calendar Year	GRADUATES EMPLOYED IN THE FIELD IN A SINGLE POSITION	GRADUATES EMPLOYED IN THE FIELD IN CONCURRENT AGGREGATED POSITIONS	TOTAL GRADUATES EMPLOYED IN THE FIELD
2015	0	0	0
2016	0	0	0

SELF-EMPLOYED/FREELANCE POSITIONS

Calendar Year	GRADUATES EMPLOYED WHO ARE SELF-EMPLOYED OR WORKING FREELANCE	TOTAL GRADUATES EMPLOYED IN THE FIELD
2015	0	0
2016	0	0

SCHOOL PERFORMANCE FACT SHEET DEFINITIONS:

THIS PROGRAM IS NEW. THEREFORE THE NUMBER OF STUDENTS WHO GRADUATE, THE NUMBER OF STUDENTS WHO ARE PLACED, OR THE STARTING SALARY YOU CAN EARN AFTER FINISHING THE EDUCATIONAL PROGRAM ARE UNKNOWN AT THIS TIME. INFORMATION REGARDING GENERAL SALARY AND PLACEMENT STATISTICS MAY BE AVAILABLE FROM GOVERNMENT SOURCES OR FROM THE INSTITUTION, BUT IS NOT EQUIVALENT TO ACTUAL PERFORMANCE DATA. THIS PROGRAM WAS APPROVED BY THE BUREAU ON 12/2015. AS OF JULY 1, 2019 TWO FULL YEARS OF DATA FOR THIS PROGRAM WILL BE AVAILABLE.

ON-TIME COMPLETION RATES

Calendar Year	# OF STUDENTS WHO BEGAN PROGRAM ¹	STUDENTS AVAILABLE FOR GRADUATION ²	# OF ON-TIME GRADUATES ³	ON-TIME COMPLETION RATE ⁴
---------------	--	--	-------------------------------------	--------------------------------------

1“NUMBER OF STUDENTS WHO BEGAN PROGRAM” IS THE NUMBER OF STUDENTS WHO BEGAN WHO ARE SCHEDULED TO COMPLETE THE PROGRAM WITHIN THE REPORTING CALENDAR YEAR.

2 “STUDENTS AVAILABLE FOR GRADUATION” IS THE NUMBER OF STUDENTS WHO BEGAN THE PROGRAM MINUS THE NUMBER OF “STUDENTS UNAVAILABLE FOR GRADUATION”, WHICH MEANS STUDENTS WHO HAVE DIED, BEEN INCARCERATED, OR CALLED TO ACTIVE MILITARY DUTY.

3“GRADUATES” IS THE NUMBER OF STUDENTS WHO COMPLETED THE PROGRAM WITHIN 100% OF THE PUBLISHED LENGTH.

4“COMPLETION RATE” IS THE NUMBER OF GRADUATES DIVIDED BY THE NUMBER OF “STUDENTS AVAILABLE FOR GRADUATION”.

STUDENTS COMPLETING WITHIN 150% OF THE PUBLISHED PROGRAM LENGTH

Calendar Year	# OF STUDENTS WHO BEGAN PROGRAM ¹	STUDENTS AVAILABLE FOR GRADUATION ²	150% GRADUATES ⁵	150% COMPLETION RATE ⁶
---------------	--	--	-----------------------------	-----------------------------------

5“150% GRADUATES RATE” IS THE NUMBER OF STUDENTS WHO COMPLETED THE PROGRAM WITHIN 101%-150% OF THE PUBLISHED PROGRAM RATE.

6“150% COMPLETION RATE” IS THE PERCENTAGE OF STUDENTS WHO COMPLETED THE PROGRAM IN THE REPORTED CALENDAR YEAR WITHIN 101% -150% OF THE PUBLISHED LENGTH.

JOB PLACEMENT RATES

Calendar Year	# OF STUDENTS WHO BEGAN PROGRAM ¹	# OF GRADUATES ⁷	GRADUATES AVAILABLE FOR EMPLOYMENT ⁸	GRADUATES EMPLOYED IN THE FIELD ⁹	PLACEMENT RATE ¹⁰
---------------	--	-----------------------------	---	--	------------------------------

7“# OF GRADUATES” IS THE NUMBER OF STUDENTS WHO COMPLETED THE PROGRAM WITHIN 100% OF THE PUBLISHED LENGTH.

8“GRADUATES AVAILABLE FOR EMPLOYMENT” MEANS THE NUMBER OF GRADUATES MINUS THE NUMBER OF GRADUATES UNAVAILABLE FOR EMPLOYMENT. GRADUATES UNAVAILABLE FOR EMPLOYMENT MEANS GRADUATES WHO HAVE DIED, BECOME INCARCERATED, ARE CALLED TO ACTIVE MILITARY DUTY, OR ARE INTERNATIONAL STUDENTS WHO DO NOT HAVE A VISA ALLOWING EMPLOYMENT.

9“GRADUATES EMPLOYED IN THE FIELD” ARE GRADUATES WHO REPORT THAT THEY ARE EMPLOYED WITHIN SIX MONTHS OF GRADUATION IN A POSITION REQUIRING THE SKILLS THEY OBTAINED THROUGH THE EDUCATION PROVIDED BY THE SCHOOL.

10“PLACEMENT RATE” IS THE NUMBER OF EMPLOYED GRADUATES DIVIDED BY THE “GRADUATES AVAILABLE FOR EMPLOYMENT”.

INSTITUTIONAL EMPLOYMENT

Calendar Year	GRADUATES EMPLOYED IN THE FIELD WHO ARE EMPLOYED BY THE INSTITUTION, AN EMPLOYER OWNED BY THIS INSTITUTION, OR AN EMPLOYER WHO SHARES OWNERSHIP WITH THE INSTITUTION	TOTAL GRADUATES EMPLOYED IN THE FIELD
2015	0	0
2016	0	0

STUDENT'S INITIALS: _____ DATE: _____
 INITIAL ONLY AFTER YOU HAVE HAD SUFFICIENT TIME TO
 READ AND UNDERSTAND THE INFORMATION

SALARY AND WAGE INFORMATION

Year	GRADUATES AVAILABLE FOR EMPLOYMENT ⁸	GRADUATES EMPLOYED IN THE FIELD ⁹	BELOW \$30,000	\$30,000 TO 34,999	\$35,000 TO 39,999	\$40,000 TO 44,999	\$45,000 TO 49,999	\$50,000 TO 54,999	ABOVE \$55,000	STUDENTS NOT REPORTING SALARY
2015	0	0	0	0	0	0	0	0	0	0
2016	0	0	0	0	0	0	0	0	0	0

STUDENT'S INITIALS: _____ DATE: _____
 INITIAL ONLY AFTER YOU HAVE HAD SUFFICIENT TIME TO
 READ AND UNDERSTAND THE INFORMATION

COST OF EDUCATIONAL PROGRAM

TOTAL CHARGES FOR THE PROGRAM FOR STUDENTS COMPLETING ON-TIME IN 2016. TOTAL CHARGES MAY BE HIGHER FOR STUDENTS THAT DO NOT COMPLETE ON-TIME.
\$38,909.00

STUDENT'S INITIALS: _____ DATE: _____
 INITIAL ONLY AFTER YOU HAVE HAD SUFFICIENT TIME TO
 READ AND UNDERSTAND THE INFORMATION

FEDERAL STUDENT LOAN DEBT AT WCUJ

% OF STUDENTS WHO DEFAULTED ON FEDERAL LOANS AT THIS SCHOOL	% OF STUDENTS ENROLLED IN 2016 WHO TOOK OUT FEDERAL LOANS TO PAY FOR THIS PROGRAM	% OF GRADUATES IN 2016 WHO TOOK OUT FEDERAL STUDENT LOANS TO PAY FOR THIS PROGRAM	AVERAGE FEDERAL LOAN DEBT OF 2016 GRADUATES WHO TOOK OUT FEDERAL LOANS AT THIS INSTITUTION
5.4%	0	0	0

STUDENT'S INITIALS: _____ DATE: _____
 INITIAL ONLY AFTER YOU HAVE HAD SUFFICIENT TIME TO
 READ AND UNDERSTAND THE INFORMATION

THIS FACT SHEET IS FILED WITH THE BUREAU FOR PRIVATE POSTSECONDARY EDUCATION. REGARDLESS OF ANY INFORMATION YOU MAY HAVE RELATING TO COMPLETION RATES, PLACEMENT RATES, STARTING SALARIES, OR LICENSE EXAM PASSAGE RATES, THIS FACT SHEET CONTAINS THE INFORMATION AS CALCULATED PURSUANT TO STATE LAW.

ANY QUESTIONS A STUDENT MAY HAVE REGARDING THIS FACT SHEET THAT HAVE NOT BEEN SATISFACTORILY ANSWERED BY THIS INSTITUTION MAY BE DIRECTED TO THE BUREAU FOR PRIVATE POSTSECONDARY EDUCATION AT 2535 CAPITOL OAKS DRIVE, SUITE 400, SACRAMENTO, CA 95833, WWW.BPPE.CA.GOV, TOLL-FREE TELEPHONE NUMBER (888) 370-7589 OR BY FAX (916) 263-1897.

 STUDENT NAME-PRINT

 STUDENT SIGNATURE

 DATE

 SCHOOL OFFICIAL

 DATE

WEST COAST ULTRASOUND INSTITUTE
291 S. LA CIENEGA BLVD., SUITE 500
BEVERLY HILLS, CA 90211
(310) 289-5123W
WW.WCUI.EDU



WEST COAST ULTRASOUND INSTITUTE
3700 E. INLAND EMPIRE BLVD., SUITE 235
ONTARIO, CA 91764
(909) 483-3808
WW.WCUI.EDU

STUDENT'S RIGHT TO CANCEL:

A STUDENT HAS THE RIGHT TO CANCEL THE ENROLLMENT AGREEMENT AND OBTAIN A REFUND OF CHARGES PAID THROUGH ATTENDANCE AT THE FIRST CLASS SESSION, OR THE SEVENTH DAY AFTER ENROLLMENT, WHICHEVER IS LATER. IF A STUDENT HAS RECEIVED FEDERAL STUDENT FINANCIAL AID FUNDS, THE STUDENT IS ENTITLED TO A REFUND OF MONEYS NOT PAID FROM FEDERAL STUDENT FINANCIAL AID PROGRAM FUNDS. TO CANCEL THIS ENROLLMENT AGREEMENT AND/OR TERMINATE THE COURSE OF STUDY, THE STUDENT MUST MAIL OR DELIVER A SIGNED AND DATED COPY OF THE CANCELLATION NOTICE (AVAILABLE IN THE REGISTRAR'S OFFICE), OR MAIL OR DELIVER ANOTHER WRITTEN NOTICE, OR SEND A TELEGRAM. IF IT IS MAILED, IT IS DEEMED EFFECTIVE WHEN IT IS DEPOSITED IN THE MAIL PROPERLY WITH PREPAID POSTAGE PAID. THE ENROLLMENT AGREEMENT MAY BE TERMINATED BY THE COLLEGE FOR UNSATISFACTORY ACADEMIC PROGRESS, POOR ATTENDANCE, USE OF CONTROLLED SUBSTANCES ON CAMPUS, CONDUCT DETRIMENTAL TO THE COLLEGE, FAILURE TO COMPLY WITH FINANCIAL AID REGULATIONS OR NON-OBSERVANCE OF OTHER STUDENT REGULATIONS. IF YOU ARE DISMISSED, YOU MAY APPEAL TO THE APPEALS COMMITTEE. A FINAL DECISION WILL BE MADE ACCORDING TO SCHOOL POLICY. MORE INFORMATION IS AVAILABLE IN THE COLLEGE'S CATALOG.

WEST COAST ULTRASOUND INSTITUTE
 BEVERLY HILLS & ONTARIO CAMPUSES
 SCHOOL PERFORMANCE FACT SHEET
 2017-18 ACADEMIC YEAR



MAGNETIC RESONANCE IMAGING ACADEMIC ASSOCIATE OF SCIENCE DEGREE
 (NEW PROGRAM. NO DATA AVAILABLE FOR THE REPORTING PERIOD)

ON-TIME COMPLETION RATES

Calendar Year	# OF STUDENTS WHO BEGAN PROGRAM ¹	STUDENTS AVAILABLE FOR GRADUATION ²	# OF ON-TIME GRADUATES ³	ON-TIME COMPLETION RATE ⁴
2015	0	0	0	0
2016	0	0	0	0

STUDENTS COMPLETING WITHIN 150% OF THE PUBLISHED PROGRAM LENGTH

Calendar Year	# OF STUDENTS WHO BEGAN PROGRAM ¹	STUDENTS AVAILABLE FOR GRADUATION ²	150% GRADUATES ⁵	150% COMPLETION RATE ⁶
2013	0	0	0	0
2014	0	0	0	0
2015	0	0	0	0
2016	0	0	0	0

STUDENT'S INITIALS: _____ DATE: _____
 INITIAL ONLY AFTER YOU HAVE HAD SUFFICIENT TIME TO
 READ AND UNDERSTAND THE INFORMATION

JOB PLACEMENT RATES

Calendar Year	# OF STUDENTS WHO BEGAN PROGRAM ¹	# OF GRADUATES ⁷	GRADUATES AVAILABLE FOR EMPLOYMENT ⁸	GRADUATES EMPLOYED IN THE FIELD ⁹	PLACEMENT RATE ¹⁰
2015	0	0	0	0	0
2016	0	0	0	0	0

YOU MAY OBTAIN FROM THE INSTITUTION A LIST OF THE EMPLOYMENT POSITIONS DETERMINED TO BE IN THE FIELD FOR WHICH A STUDENT IS RECEIVING EDUCATION AND TRAINING FROM THE OFFICE OF STUDENT SERVICES.

PART TIME VS. FULL TIME EMPLOYMENT

Calendar Year	GRADUATES EMPLOYED IN THE FIELD 20 TO 29 HOURS PER WEEK	GRADUATES EMPLOYED IN THE FIELD AT LEAST 30 HOURS PER WEEK	TOTAL GRADUATES EMPLOYED IN THE FIELD
2015	0	0	0
2016	0	0	0

SINGLE POSITION VS. CONCURRENT AGGREGATED POSITIONS

Calendar Year	GRADUATES EMPLOYED IN THE FIELD IN A SINGLE POSITION	GRADUATES EMPLOYED IN THE FIELD IN CONCURRENT AGGREGATED POSITIONS	TOTAL GRADUATES EMPLOYED IN THE FIELD
2015	0	0	0
2016	0	0	0

SELF-EMPLOYED/FREELANCE POSITIONS

Calendar Year	GRADUATES EMPLOYED WHO ARE SELF-EMPLOYED OR WORKING FREELANCE	TOTAL GRADUATES EMPLOYED IN THE FIELD
2015	0	0
2016	0	0

SCHOOL PERFORMANCE FACT SHEET DEFINITIONS:

THIS PROGRAM IS NEW. THEREFORE THE NUMBER OF STUDENTS WHO GRADUATE, THE NUMBER OF STUDENTS WHO ARE PLACED, OR THE STARTING SALARY YOU CAN EARN AFTER FINISHING THE EDUCATIONAL PROGRAM ARE UNKNOWN AT THIS TIME. INFORMATION REGARDING GENERAL SALARY AND PLACEMENT STATISTICS MAY BE AVAILABLE FROM GOVERNMENT SOURCES OR FROM THE INSTITUTION, BUT IS NOT EQUIVALENT TO ACTUAL PERFORMANCE DATA. THIS PROGRAM WAS APPROVED BY THE BUREAU ON 8/24/2015. AS OF JULY 1, 2019 TWO FULL YEARS OF DATA FOR THIS PROGRAM WILL BE AVAILABLE.

ON-TIME COMPLETION RATES

Calendar Year	# OF STUDENTS WHO BEGAN PROGRAM ¹	STUDENTS AVAILABLE FOR GRADUATION ²	# OF ON-TIME GRADUATES ³	ON-TIME COMPLETION RATE ⁴
---------------	--	--	-------------------------------------	--------------------------------------

1“NUMBER OF STUDENTS WHO BEGAN PROGRAM” IS THE NUMBER OF STUDENTS WHO BEGAN WHO ARE SCHEDULED TO COMPLETE THE PROGRAM WITHIN THE REPORTING CALENDAR YEAR.

2 “STUDENTS AVAILABLE FOR GRADUATION” IS THE NUMBER OF STUDENTS WHO BEGAN THE PROGRAM MINUS THE NUMBER OF “STUDENTS UNAVAILABLE FOR GRADUATION”, WHICH MEANS STUDENTS WHO HAVE DIED, BEEN INCARCERATED, OR CALLED TO ACTIVE MILITARY DUTY.

3“GRADUATES” IS THE NUMBER OF STUDENTS WHO COMPLETED THE PROGRAM WITHIN 100% OF THE PUBLISHED LENGTH.

4“COMPLETION RATE” IS THE NUMBER OF GRADUATES DIVIDED BY THE NUMBER OF “STUDENTS AVAILABLE FOR GRADUATION”.

STUDENTS COMPLETING WITHIN 150% OF THE PUBLISHED PROGRAM LENGTH

Calendar Year	# OF STUDENTS WHO BEGAN PROGRAM ¹	STUDENTS AVAILABLE FOR GRADUATION ²	150% GRADUATES ⁵	150% COMPLETION RATE ⁶
---------------	--	--	-----------------------------	-----------------------------------

5“150% GRADUATES RATE” IS THE NUMBER OF STUDENTS WHO COMPLETED THE PROGRAM WITHIN 101%-150% OF THE PUBLISHED PROGRAM RATE.

6“150% COMPLETION RATE” IS THE PERCENTAGE OF STUDENTS WHO COMPLETED THE PROGRAM IN THE REPORTED CALENDAR YEAR WITHIN 101% -150% OF THE PUBLISHED LENGTH.

JOB PLACEMENT RATES

Calendar Year	# OF STUDENTS WHO BEGAN PROGRAM ¹	# OF GRADUATES ⁷	GRADUATES AVAILABLE FOR EMPLOYMENT ⁸	GRADUATES EMPLOYED IN THE FIELD ⁹	PLACEMENT RATE ¹⁰
---------------	--	-----------------------------	---	--	------------------------------

7“# OF GRADUATES” IS THE NUMBER OF STUDENTS WHO COMPLETED THE PROGRAM WITHIN 100% OF THE PUBLISHED LENGTH.

8“GRADUATES AVAILABLE FOR EMPLOYMENT” MEANS THE NUMBER OF GRADUATES MINUS THE NUMBER OF GRADUATES UNAVAILABLE FOR EMPLOYMENT. GRADUATES UNAVAILABLE FOR EMPLOYMENT MEANS GRADUATES WHO HAVE DIED, BECOME INCARCERATED, ARE CALLED TO ACTIVE MILITARY DUTY, OR ARE INTERNATIONAL STUDENTS WHO DO NOT HAVE A VISA ALLOWING EMPLOYMENT.

9“GRADUATES EMPLOYED IN THE FIELD” ARE GRADUATES WHO REPORT THAT THEY ARE EMPLOYED WITHIN SIX MONTHS OF GRADUATION IN A POSITION REQUIRING THE SKILLS THEY OBTAINED THROUGH THE EDUCATION PROVIDED BY THE SCHOOL.

10“PLACEMENT RATE” IS THE NUMBER OF EMPLOYED GRADUATES DIVIDED BY THE “GRADUATES AVAILABLE FOR EMPLOYMENT”.

INSTITUTIONAL EMPLOYMENT

Calendar Year	GRADUATES EMPLOYED IN THE FIELD WHO ARE EMPLOYED BY THE INSTITUTION, AN EMPLOYER OWNED BY THIS INSTITUTION, OR AN EMPLOYER WHO SHARES OWNERSHIP WITH THE INSTITUTION	TOTAL GRADUATES EMPLOYED IN THE FIELD
2015	0	0
2016	0	0

STUDENT'S INITIALS: _____ DATE: _____
 INITIAL ONLY AFTER YOU HAVE HAD SUFFICIENT TIME TO
 READ AND UNDERSTAND THE INFORMATION

SALARY AND WAGE INFORMATION

Year	GRADUATES AVAILABLE FOR EMPLOYMENT ⁸	GRADUATES EMPLOYED IN THE FIELD ⁹	BELOW \$30,000	\$30,000 TO 34,999	\$35,000 TO 39,999	\$40,000 TO 44,999	\$45,000 TO 49,999	\$50,000 TO 54,999	ABOVE \$55,000	STUDENTS NOT REPORTING SALARY
2015	0	0	0	0	0	0	0	0	0	0
2016	0	0	0	0	0	0	0	0	0	0

STUDENT'S INITIALS: _____ DATE: _____
 INITIAL ONLY AFTER YOU HAVE HAD SUFFICIENT TIME TO
 READ AND UNDERSTAND THE INFORMATION

COST OF EDUCATIONAL PROGRAM

TOTAL CHARGES FOR THE PROGRAM FOR STUDENTS COMPLETING ON-TIME IN 2016. TOTAL CHARGES MAY BE HIGHER FOR STUDENTS THAT DO NOT COMPLETE ON-TIME.
\$29,658.00

STUDENT'S INITIALS: _____ DATE: _____
 INITIAL ONLY AFTER YOU HAVE HAD SUFFICIENT TIME TO
 READ AND UNDERSTAND THE INFORMATION

FEDERAL STUDENT LOAN DEBT AT WCUI

% OF STUDENTS WHO DEFAULTED ON FEDERAL LOANS AT THIS SCHOOL	% OF STUDENTS ENROLLED IN 2016 WHO TOOK OUT FEDERAL LOANS TO PAY FOR THIS PROGRAM	% OF GRADUATES IN 2016 WHO TOOK OUT FEDERAL STUDENT LOANS TO PAY FOR THIS PROGRAM	AVERAGE FEDERAL LOAN DEBT OF 2016 GRADUATES WHO TOOK OUT FEDERAL LOANS AT THIS INSTITUTION
5.4%	0	0	0

STUDENT'S INITIALS: _____ DATE: _____
 INITIAL ONLY AFTER YOU HAVE HAD SUFFICIENT TIME TO
 READ AND UNDERSTAND THE INFORMATION

THIS FACT SHEET IS FILED WITH THE BUREAU FOR PRIVATE POSTSECONDARY EDUCATION. REGARDLESS OF ANY INFORMATION YOU MAY HAVE RELATING TO COMPLETION RATES, PLACEMENT RATES, STARTING SALARIES, OR LICENSE EXAM PASSAGE RATES, THIS FACT SHEET CONTAINS THE INFORMATION AS CALCULATED PURSUANT TO STATE LAW.

ANY QUESTIONS A STUDENT MAY HAVE REGARDING THIS FACT SHEET THAT HAVE NOT BEEN SATISFACTORILY ANSWERED BY THIS INSTITUTION MAY BE DIRECTED TO THE BUREAU FOR PRIVATE POSTSECONDARY EDUCATION AT 2535 CAPITOL OAKS DRIVE, SUITE 400, SACRAMENTO, CA 95833, WWW.BPPE.CA.GOV, TOLL-FREE TELEPHONE NUMBER (888) 370-7589 OR BY FAX (916) 263-1897.

 STUDENT NAME-PRINT

 STUDENT SIGNATURE

 DATE

 SCHOOL OFFICIAL

 DATE

WEST COAST ULTRASOUND INSTITUTE
291 S. LA CIENEGA BLVD., SUITE 500
BEVERLY HILLS, CA 90211
(310) 289-5123W
WW.WCUI.EDU



WEST COAST ULTRASOUND INSTITUTE
3700 E. INLAND EMPIRE BLVD., SUITE 235
ONTARIO, CA 91764
(909) 483-3808
WW.WCUI.EDU

STUDENT'S RIGHT TO CANCEL:

A STUDENT HAS THE RIGHT TO CANCEL THE ENROLLMENT AGREEMENT AND OBTAIN A REFUND OF CHARGES PAID THROUGH ATTENDANCE AT THE FIRST CLASS SESSION, OR THE SEVENTH DAY AFTER ENROLLMENT, WHICHEVER IS LATER. IF A STUDENT HAS RECEIVED FEDERAL STUDENT FINANCIAL AID FUNDS, THE STUDENT IS ENTITLED TO A REFUND OF MONEYS NOT PAID FROM FEDERAL STUDENT FINANCIAL AID PROGRAM FUNDS. TO CANCEL THIS ENROLLMENT AGREEMENT AND/OR TERMINATE THE COURSE OF STUDY, THE STUDENT MUST MAIL OR DELIVER A SIGNED AND DATED COPY OF THE CANCELLATION NOTICE (AVAILABLE IN THE REGISTRAR'S OFFICE), OR MAIL OR DELIVER ANOTHER WRITTEN NOTICE, OR SEND A TELEGRAM. IF IT IS MAILED, IT IS DEEMED EFFECTIVE WHEN IT IS DEPOSITED IN THE MAIL PROPERLY WITH PREPAID POSTAGE PAID. THE ENROLLMENT AGREEMENT MAY BE TERMINATED BY THE COLLEGE FOR UNSATISFACTORY ACADEMIC PROGRESS, POOR ATTENDANCE, USE OF CONTROLLED SUBSTANCES ON CAMPUS, CONDUCT DETRIMENTAL TO THE COLLEGE, FAILURE TO COMPLY WITH FINANCIAL AID REGULATIONS OR NON-OBSERVANCE OF OTHER STUDENT REGULATIONS. IF YOU ARE DISMISSED, YOU MAY APPEAL TO THE APPEALS COMMITTEE. A FINAL DECISION WILL BE MADE ACCORDING TO SCHOOL POLICY. MORE INFORMATION IS AVAILABLE IN THE COLLEGE'S CATALOG.

WEST COAST ULTRASOUND INSTITUTE
 BEVERLY HILLS & ONTARIO CAMPUSES
 SCHOOL PERFORMANCE FACT SHEET
 2018-19 ACADEMIC YEAR



RN TO BSN BACHELOR OF SCIENCE DEGREE

(NEW PROGRAM. NO DATA AVAILABLE FOR THE REPORTING PERIOD)

ON-TIME COMPLETION RATES

Calendar Year	# OF STUDENTS WHO BEGAN PROGRAM ¹	STUDENTS AVAILABLE FOR GRADUATION ²	# OF ON-TIME GRADUATES ³	ON-TIME COMPLETION RATE ⁴
2016	0	0	0	0
2017	0	0	0	0

STUDENTS COMPLETING WITHIN 150% OF THE PUBLISHED PROGRAM LENGTH

Calendar Year	# OF STUDENTS WHO BEGAN PROGRAM ¹	STUDENTS AVAILABLE FOR GRADUATION ²	150% GRADUATES ⁵	150% COMPLETION RATE ⁶
2014	0	0	0	0
2015	0	0	0	0
2016	0	0	0	0
2017	0	0	0	0

STUDENT'S INITIALS: _____ DATE: _____
 INITIAL ONLY AFTER YOU HAVE HAD SUFFICIENT TIME TO
 READ AND UNDERSTAND THE INFORMATION

JOB PLACEMENT RATES

Calendar Year	# OF STUDENTS WHO BEGAN PROGRAM ¹	# OF GRADUATES ⁷	GRADUATES AVAILABLE FOR EMPLOYMENT ⁸	GRADUATES EMPLOYED IN THE FIELD ⁹	PLACEMENT RATE ¹⁰
2016	0	0	0	0	0
2017	0	0	0	0	0

YOU MAY OBTAIN FROM THE INSTITUTION A LIST OF THE EMPLOYMENT POSITIONS DETERMINED TO BE IN THE FIELD FOR WHICH A STUDENT IS RECEIVING EDUCATION AND TRAINING FROM THE OFFICE OF STUDENT SERVICES.

PART TIME VS. FULL TIME EMPLOYMENT

Calendar Year	GRADUATES EMPLOYED IN THE FIELD 20 TO 29 HOURS PER WEEK	GRADUATES EMPLOYED IN THE FIELD AT LEAST 30 HOURS PER WEEK	TOTAL GRADUATES EMPLOYED IN THE FIELD
2016	0	0	0
2017	0	0	0

SINGLE POSITION VS. CONCURRENT AGGREGATED POSITIONS

Calendar Year	GRADUATES EMPLOYED IN THE FIELD IN A SINGLE POSITION	GRADUATES EMPLOYED IN THE FIELD IN CONCURRENT AGGREGATED POSITIONS	TOTAL GRADUATES EMPLOYED IN THE FIELD
2016	0	0	0
2017	0	0	0

SELF-EMPLOYED/FREELANCE POSITIONS

Calendar Year	GRADUATES EMPLOYED WHO ARE SELF-EMPLOYED OR WORKING FREELANCE	TOTAL GRADUATES EMPLOYED IN THE FIELD
2016	0	0
2017	0	0

SCHOOL PERFORMANCE FACT SHEET DEFINITIONS:

THIS PROGRAM IS NEW. THEREFORE THE NUMBER OF STUDENTS WHO GRADUATE, THE NUMBER OF STUDENTS WHO ARE PLACED, OR THE STARTING SALARY YOU CAN EARN AFTER FINISHING THE EDUCATIONAL PROGRAM ARE UNKNOWN AT THIS TIME. INFORMATION REGARDING GENERAL SALARY AND PLACEMENT STATISTICS MAY BE AVAILABLE FROM GOVERNMENT SOURCES OR FROM THE INSTITUTION, BUT IS NOT EQUIVALENT TO ACTUAL PERFORMANCE DATA. THIS PROGRAM WAS APPROVED BY THE BUREAU ON 4/17/2018. AS OF JULY 1, 2022 TWO FULL YEARS OF DATA FOR THIS PROGRAM WILL BE AVAILABLE.

ON-TIME COMPLETION RATES

Calendar Year	# OF STUDENTS WHO BEGAN PROGRAM ¹	STUDENTS AVAILABLE FOR GRADUATION ²	# OF ON-TIME GRADUATES ³	ON-TIME COMPLETION RATE ⁴
---------------	--	--	-------------------------------------	--------------------------------------

1“NUMBER OF STUDENTS WHO BEGAN PROGRAM” IS THE NUMBER OF STUDENTS WHO BEGAN WHO ARE SCHEDULED TO COMPLETE THE PROGRAM WITHIN THE REPORTING CALENDAR YEAR.

2 “STUDENTS AVAILABLE FOR GRADUATION” IS THE NUMBER OF STUDENTS WHO BEGAN THE PROGRAM MINUS THE NUMBER OF “STUDENTS UNAVAILABLE FOR GRADUATION”, WHICH MEANS STUDENTS WHO HAVE DIED, BEEN INCARCERATED, OR CALLED TO ACTIVE MILITARY DUTY.

3“GRADUATES” IS THE NUMBER OF STUDENTS WHO COMPLETED THE PROGRAM WITHIN 100% OF THE PUBLISHED LENGTH.

4“COMPLETION RATE” IS THE NUMBER OF GRADUATES DIVIDED BY THE NUMBER OF “STUDENTS AVAILABLE FOR GRADUATION”.

STUDENTS COMPLETING WITHIN 150% OF THE PUBLISHED PROGRAM LENGTH

Calendar Year	# OF STUDENTS WHO BEGAN PROGRAM ¹	STUDENTS AVAILABLE FOR GRADUATION ²	150% GRADUATES ⁵	150% COMPLETION RATE ⁶
---------------	--	--	-----------------------------	-----------------------------------

5“150% GRADUATES RATE” IS THE NUMBER OF STUDENTS WHO COMPLETED THE PROGRAM WITHIN 101%-150% OF THE PUBLISHED PROGRAM RATE.

6“150% COMPLETION RATE” IS THE PERCENTAGE OF STUDENTS WHO COMPLETED THE PROGRAM IN THE REPORTED CALENDAR YEAR WITHIN 101% -150% OF THE PUBLISHED LENGTH.

JOB PLACEMENT RATES

Calendar Year	# OF STUDENTS WHO BEGAN PROGRAM ¹	# OF GRADUATES ⁷	GRADUATES AVAILABLE FOR EMPLOYMENT ⁸	GRADUATES EMPLOYED IN THE FIELD ⁹	PLACEMENT RATE ¹⁰
---------------	--	-----------------------------	---	--	------------------------------

7“# OF GRADUATES” IS THE NUMBER OF STUDENTS WHO COMPLETED THE PROGRAM WITHIN 100% OF THE PUBLISHED LENGTH.

8“GRADUATES AVAILABLE FOR EMPLOYMENT” MEANS THE NUMBER OF GRADUATES MINUS THE NUMBER OF GRADUATES UNAVAILABLE FOR EMPLOYMENT. GRADUATES UNAVAILABLE FOR EMPLOYMENT MEANS GRADUATES WHO HAVE DIED, BECOME INCARCERATED, ARE CALLED TO ACTIVE MILITARY DUTY, OR ARE INTERNATIONAL STUDENTS WHO DO NOT HAVE A VISA ALLOWING EMPLOYMENT.

9“GRADUATES EMPLOYED IN THE FIELD” ARE GRADUATES WHO REPORT THAT THEY ARE EMPLOYED WITHIN SIX MONTHS OF GRADUATION IN A POSITION REQUIRING THE SKILLS THEY OBTAINED THROUGH THE EDUCATION PROVIDED BY THE SCHOOL.

10“PLACEMENT RATE” IS THE NUMBER OF EMPLOYED GRADUATES DIVIDED BY THE “GRADUATES AVAILABLE FOR EMPLOYMENT”.

INSTITUTIONAL EMPLOYMENT

Calendar Year	GRADUATES EMPLOYED IN THE FIELD WHO ARE EMPLOYED BY THE INSTITUTION, AN EMPLOYER OWNED BY THIS INSTITUTION, OR AN EMPLOYER WHO SHARES OWNERSHIP WITH THE INSTITUTION	TOTAL GRADUATES EMPLOYED IN THE FIELD
2016	0	0
2017	0	0

STUDENT'S INITIALS: _____ DATE: _____
 INITIAL ONLY AFTER YOU HAVE HAD SUFFICIENT TIME TO
 READ AND UNDERSTAND THE INFORMATION

SALARY AND WAGE INFORMATION

Year	GRADUATES AVAILABLE FOR EMPLOYMENT ⁸	GRADUATES EMPLOYED IN THE FIELD ⁹	BELOW \$30,000	\$30,000 TO 34,999	\$35,000 TO 39,999	\$40,000 TO 44,999	\$45,000 TO 49,999	\$50,000 TO 54,999	ABOVE \$55,000	STUDENTS NOT REPORTING SALARY
2016	0	0	0	0	0	0	0	0	0	0
2017	0	0	0	0	0	0	0	0	0	0

STUDENT'S INITIALS: _____ DATE: _____
 INITIAL ONLY AFTER YOU HAVE HAD SUFFICIENT TIME TO
 READ AND UNDERSTAND THE INFORMATION

COST OF EDUCATIONAL PROGRAM

TOTAL CHARGES FOR THE PROGRAM FOR STUDENTS COMPLETING ON-TIME IN 2017. TOTAL CHARGES MAY BE HIGHER FOR STUDENTS THAT DO NOT COMPLETE ON-TIME.
19,496.00

STUDENT'S INITIALS: _____ DATE: _____
 INITIAL ONLY AFTER YOU HAVE HAD SUFFICIENT TIME TO
 READ AND UNDERSTAND THE INFORMATION

FEDERAL STUDENT LOAN DEBT AT WCU

% OF STUDENTS WHO DEFAULTED ON FEDERAL LOANS AT THIS SCHOOL	% OF STUDENTS ENROLLED IN 2016 WHO TOOK OUT FEDERAL LOANS TO PAY FOR THIS PROGRAM	% OF GRADUATES IN 2016 WHO TOOK OUT FEDERAL STUDENT LOANS TO PAY FOR THIS PROGRAM	AVERAGE FEDERAL LOAN DEBT OF 2016 GRADUATES WHO TOOK OUT FEDERAL LOANS AT THIS INSTITUTION
5.4%	0	0	0

STUDENT'S INITIALS: _____ DATE: _____
 INITIAL ONLY AFTER YOU HAVE HAD SUFFICIENT TIME TO
 READ AND UNDERSTAND THE INFORMATION

THIS FACT SHEET IS FILED WITH THE BUREAU FOR PRIVATE POSTSECONDARY EDUCATION. REGARDLESS OF ANY INFORMATION YOU MAY HAVE RELATING TO COMPLETION RATES, PLACEMENT RATES, STARTING SALARIES, OR LICENSE EXAM PASSAGE RATES, THIS FACT SHEET CONTAINS THE INFORMATION AS CALCULATED PURSUANT TO STATE LAW.

ANY QUESTIONS A STUDENT MAY HAVE REGARDING THIS FACT SHEET THAT HAVE NOT BEEN SATISFACTORILY ANSWERED BY THIS INSTITUTION MAY BE DIRECTED TO THE BUREAU FOR PRIVATE POSTSECONDARY EDUCATION AT 2535 CAPITOL OAKS DRIVE, SUITE 400, SACRAMENTO, CA 95833, WWW.BPPE.CA.GOV, TOLL-FREE TELEPHONE NUMBER (888) 370-7589 OR BY FAX (916) 263-1897.

 STUDENT NAME-PRINT

 STUDENT SIGNATURE

 DATE

 SCHOOL OFFICIAL

 DATE

WEST COAST ULTRASOUND INSTITUTE
291 S. LA CIENEGA BLVD., SUITE 500
BEVERLY HILLS, CA 90211
(310) 289-5123W
WW.WCUI.EDU



WEST COAST ULTRASOUND INSTITUTE
3700 E. INLAND EMPIRE BLVD., SUITE 235
ONTARIO, CA 91764
(909) 483-3808
WW.WCUI.EDU

STUDENT'S RIGHT TO CANCEL:

A STUDENT HAS THE RIGHT TO CANCEL THE ENROLLMENT AGREEMENT AND OBTAIN A REFUND OF CHARGES PAID THROUGH ATTENDANCE AT THE FIRST CLASS SESSION, OR THE SEVENTH DAY AFTER ENROLLMENT, WHICHEVER IS LATER. IF A STUDENT HAS RECEIVED FEDERAL STUDENT FINANCIAL AID FUNDS, THE STUDENT IS ENTITLED TO A REFUND OF MONEYS NOT PAID FROM FEDERAL STUDENT FINANCIAL AID PROGRAM FUNDS. TO CANCEL THIS ENROLLMENT AGREEMENT AND/OR TERMINATE THE COURSE OF STUDY, THE STUDENT MUST MAIL OR DELIVER A SIGNED AND DATED COPY OF THE CANCELLATION NOTICE (AVAILABLE IN THE REGISTRAR'S OFFICE), OR MAIL OR DELIVER ANOTHER WRITTEN NOTICE, OR SEND A TELEGRAM. IF IT IS MAILED, IT IS DEEMED EFFECTIVE WHEN IT IS DEPOSITED IN THE MAIL PROPERLY WITH PREPAID POSTAGE PAID. THE ENROLLMENT AGREEMENT MAY BE TERMINATED BY THE COLLEGE FOR UNSATISFACTORY ACADEMIC PROGRESS, POOR ATTENDANCE, USE OF CONTROLLED SUBSTANCES ON CAMPUS, CONDUCT DETRIMENTAL TO THE COLLEGE, FAILURE TO COMPLY WITH FINANCIAL AID REGULATIONS OR NON-OBSERVANCE OF OTHER STUDENT REGULATIONS. IF YOU ARE DISMISSED, YOU MAY APPEAL TO THE APPEALS COMMITTEE. A FINAL DECISION WILL BE MADE ACCORDING TO SCHOOL POLICY. MORE INFORMATION IS AVAILABLE IN THE COLLEGE'S CATALOG.

WEST COAST ULTRASOUND INSTITUTE
 BEVERLY HILLS CAMPUS
 SCHOOL PERFORMANCE FACT SHEET
 2017-18 ACADEMIC YEAR



MAGNETIC RESONANCE IMAGING (LONG) DIPLOMA PROGRAM

ON-TIME COMPLETION RATES

Calendar Year	# OF STUDENTS WHO BEGAN PROGRAM ¹	STUDENTS AVAILABLE FOR GRADUATION ²	# OF ON-TIME GRADUATES ³	ON-TIME COMPLETION RATE ⁴
2015	2	2	2	100%
2016	0	0	0	0

STUDENTS COMPLETING WITHIN 150% OF THE PUBLISHED PROGRAM LENGTH

Calendar Year	# OF STUDENTS WHO BEGAN PROGRAM ¹	STUDENTS AVAILABLE FOR GRADUATION ²	150% GRADUATES ⁵	150% COMPLETION RATE ⁶
2013	0	0	0	0
2014	0	0	0	0
2015	0	0	0	0
2016	0	0	0	0

STUDENT'S INITIALS: _____ DATE: _____
 INITIAL ONLY AFTER YOU HAVE HAD SUFFICIENT TIME TO
 READ AND UNDERSTAND THE INFORMATION

JOB PLACEMENT RATES

Calendar Year	# OF STUDENTS WHO BEGAN PROGRAM ¹	# OF GRADUATES ⁷	GRADUATES AVAILABLE FOR EMPLOYMENT ⁸	GRADUATES EMPLOYED IN THE FIELD ⁹	PLACEMENT RATE ¹⁰
2015	2	2	2	2	100%
2016	0	0	0	0	0

YOU MAY OBTAIN FROM THE INSTITUTION A LIST OF THE EMPLOYMENT POSITIONS DETERMINED TO BE IN THE FIELD FOR WHICH A STUDENT IS RECEIVING EDUCATION AND TRAINING FROM THE OFFICE OF STUDENT SERVICES.

PART TIME VS. FULL TIME EMPLOYMENT

Calendar Year	GRADUATES EMPLOYED IN THE FIELD 20 TO 29 HOURS PER WEEK	GRADUATES EMPLOYED IN THE FIELD AT LEAST 30 HOURS PER WEEK	TOTAL GRADUATES EMPLOYED IN THE FIELD
2015	1	1	2
2016	0	0	0

SINGLE POSITION VS. CONCURRENT AGGREGATED POSITIONS

Calendar Year	GRADUATES EMPLOYED IN THE FIELD IN A SINGLE POSITION	GRADUATES EMPLOYED IN THE FIELD IN CONCURRENT AGGREGATED POSITIONS	TOTAL GRADUATES EMPLOYED IN THE FIELD
2015	2	0	2
2016	0	0	0

SELF-EMPLOYED/FREELANCE POSITIONS

Calendar Year	GRADUATES EMPLOYED WHO ARE SELF-EMPLOYED OR WORKING FREELANCE	TOTAL GRADUATES EMPLOYED IN THE FIELD
2015	0	0
2016	0	0

SCHOOL PERFORMANCE FACT SHEET DEFINITIONS:

ON-TIME COMPLETION RATES

Calendar Year	# OF STUDENTS WHO BEGAN PROGRAM ¹	STUDENTS AVAILABLE FOR GRADUATION ²	# OF ON-TIME GRADUATES ³	ON-TIME COMPLETION RATE ⁴
---------------	--	--	-------------------------------------	--------------------------------------

1“NUMBER OF STUDENTS WHO BEGAN PROGRAM” IS THE NUMBER OF STUDENTS WHO BEGAN WHO ARE SCHEDULED TO COMPLETE THE PROGRAM WITHIN THE REPORTING CALENDAR YEAR.

2 “STUDENTS AVAILABLE FOR GRADUATION” IS THE NUMBER OF STUDENTS WHO BEGAN THE PROGRAM MINUS THE NUMBER OF “STUDENTS UNAVAILABLE FOR GRADUATION”, WHICH MEANS STUDENTS WHO HAVE DIED, BEEN INCARCERATED, OR CALLED TO ACTIVE MILITARY DUTY.

3“GRADUATES” IS THE NUMBER OF STUDENTS WHO COMPLETED THE PROGRAM WITHIN 100% OF THE PUBLISHED LENGTH.

4“COMPLETION RATE” IS THE NUMBER OF GRADUATES DIVIDED BY THE NUMBER OF “STUDENTS AVAILABLE FOR GRADUATION”.

STUDENTS COMPLETING WITHIN 150% OF THE PUBLISHED PROGRAM LENGTH

Calendar Year	# OF STUDENTS WHO BEGAN PROGRAM ¹	STUDENTS AVAILABLE FOR GRADUATION ²	150% GRADUATES ⁵	150% COMPLETION RATE ⁶
---------------	--	--	-----------------------------	-----------------------------------

5“150% GRADUATES RATE” IS THE NUMBER OF STUDENTS WHO COMPLETED THE PROGRAM WITHIN 101%-150% OF THE PUBLISHED PROGRAM RATE.

6“150% COMPLETION RATE” IS THE PERCENTAGE OF STUDENTS WHO COMPLETED THE PROGRAM IN THE REPORTED CALENDAR YEAR WITHIN 101% -150% OF THE PUBLISHED LENGTH.

JOB PLACEMENT RATES

Calendar Year	# OF STUDENTS WHO BEGAN PROGRAM ¹	# OF GRADUATES ⁷	GRADUATES AVAILABLE FOR EMPLOYMENT ⁸	GRADUATES EMPLOYED IN THE FIELD ⁹	PLACEMENT RATE ¹⁰
---------------	--	-----------------------------	---	--	------------------------------

7“# OF GRADUATES” IS THE NUMBER OF STUDENTS WHO COMPLETED THE PROGRAM WITHIN 100% OF THE PUBLISHED LENGTH.

8“GRADUATES AVAILABLE FOR EMPLOYMENT” MEANS THE NUMBER OF GRADUATES MINUS THE NUMBER OF GRADUATES UNAVAILABLE FOR EMPLOYMENT. GRADUATES UNAVAILABLE FOR EMPLOYMENT MEANS GRADUATES WHO HAVE DIED, BECOME INCARCERATED, ARE CALLED TO ACTIVE MILITARY DUTY, OR ARE INTERNATIONAL STUDENTS WHO DO NOT HAVE A VISA ALLOWING EMPLOYMENT.

9“GRADUATES EMPLOYED IN THE FIELD” ARE GRADUATES WHO REPORT THAT THEY ARE EMPLOYED WITHIN SIX MONTHS OF GRADUATION IN A POSITION REQUIRING THE SKILLS THEY OBTAINED THROUGH THE EDUCATION PROVIDED BY THE SCHOOL.

10“PLACEMENT RATE” IS THE NUMBER OF EMPLOYED GRADUATES DIVIDED BY THE “GRADUATES AVAILABLE FOR EMPLOYMENT”.

INSTITUTIONAL EMPLOYMENT

Calendar Year	GRADUATES EMPLOYED IN THE FIELD WHO ARE EMPLOYED BY THE INSTITUTION, AN EMPLOYER OWNED BY THIS INSTITUTION, OR AN EMPLOYER WHO SHARES OWNERSHIP WITH THE INSTITUTION	TOTAL GRADUATES EMPLOYED IN THE FIELD
2015	0	0
2016	0	0

STUDENT'S INITIALS: _____ DATE: _____
 INITIAL ONLY AFTER YOU HAVE HAD SUFFICIENT TIME TO
 READ AND UNDERSTAND THE INFORMATION

SALARY AND WAGE INFORMATION

Year	GRADUATES AVAILABLE FOR EMPLOYMENT ⁸	GRADUATES EMPLOYED IN THE FIELD ⁹	BELOW \$30,000	\$30,000 TO 34,999	\$35,000 TO 39,999	\$40,000 TO 44,999	\$45,000 TO 49,999	\$50,000 TO 54,999	ABOVE \$55,000	STUDENTS NOT REPORTING SALARY
2015	2	2	1	0	0	0	1	0	0	0
2016	0	0	0	0	0	0	0	0	0	0

STUDENT'S INITIALS: _____ DATE: _____
 INITIAL ONLY AFTER YOU HAVE HAD SUFFICIENT TIME TO
 READ AND UNDERSTAND THE INFORMATION

COST OF EDUCATIONAL PROGRAM

TOTAL CHARGES FOR THE PROGRAM FOR STUDENTS COMPLETING ON-TIME IN 2016. TOTAL CHARGES MAY BE HIGHER FOR STUDENTS THAT DO NOT COMPLETE ON-TIME.
\$27,730.00

STUDENT'S INITIALS: _____ DATE: _____
 INITIAL ONLY AFTER YOU HAVE HAD SUFFICIENT TIME TO
 READ AND UNDERSTAND THE INFORMATION

FEDERAL STUDENT LOAN DEBT AT WCU

% OF STUDENTS WHO DEFAULTED ON FEDERAL LOANS AT THIS SCHOOL	% OF STUDENTS ENROLLED IN 2016 WHO TOOK OUT FEDERAL LOANS TO PAY FOR THIS PROGRAM	% OF GRADUATES IN 2016 WHO TOOK OUT FEDERAL STUDENT LOANS TO PAY FOR THIS PROGRAM	AVERAGE FEDERAL LOAN DEBT OF 2016 GRADUATES WHO TOOK OUT FEDERAL LOANS AT THIS INSTITUTION
5.4%	94%	100%	\$16,500.00

STUDENT'S INITIALS: _____ DATE: _____
 INITIAL ONLY AFTER YOU HAVE HAD SUFFICIENT TIME TO
 READ AND UNDERSTAND THE INFORMATION

THIS FACT SHEET IS FILED WITH THE BUREAU FOR PRIVATE POSTSECONDARY EDUCATION. REGARDLESS OF ANY INFORMATION YOU MAY HAVE RELATING TO COMPLETION RATES, PLACEMENT RATES, STARTING SALARIES, OR LICENSE EXAM PASSAGE RATES, THIS FACT SHEET CONTAINS THE INFORMATION AS CALCULATED PURSUANT TO STATE LAW.

ANY QUESTIONS A STUDENT MAY HAVE REGARDING THIS FACT SHEET THAT HAVE NOT BEEN SATISFACTORILY ANSWERED BY THIS INSTITUTION MAY BE DIRECTED TO THE BUREAU FOR PRIVATE POSTSECONDARY EDUCATION AT 2535 CAPITOL OAKS DRIVE, SUITE 400, SACRAMENTO, CA 95833, WWW.BPPE.CA.GOV, TOLL-FREE TELEPHONE NUMBER (888) 370-7589 OR BY FAX (916) 263-1897.

 STUDENT NAME-PRINT

 STUDENT SIGNATURE

 DATE

 SCHOOL OFFICIAL

 DATE

WEST COAST ULTRASOUND INSTITUTE
291 S. LA CIENEGA BLVD., SUITE 500
BEVERLY HILLS, CA 90211
(310) 289-5123W
WW.WCUI.EDU



WEST COAST ULTRASOUND INSTITUTE
3700 E. INLAND EMPIRE BLVD., SUITE 235
ONTARIO, CA 91764
(909) 483-3808
WW.WCUI.EDU

STUDENT'S RIGHT TO CANCEL:

A STUDENT HAS THE RIGHT TO CANCEL THE ENROLLMENT AGREEMENT AND OBTAIN A REFUND OF CHARGES PAID THROUGH ATTENDANCE AT THE FIRST CLASS SESSION, OR THE SEVENTH DAY AFTER ENROLLMENT, WHICHEVER IS LATER. IF A STUDENT HAS RECEIVED FEDERAL STUDENT FINANCIAL AID FUNDS, THE STUDENT IS ENTITLED TO A REFUND OF MONEYS NOT PAID FROM FEDERAL STUDENT FINANCIAL AID PROGRAM FUNDS. TO CANCEL THIS ENROLLMENT AGREEMENT AND/OR TERMINATE THE COURSE OF STUDY, THE STUDENT MUST MAIL OR DELIVER A SIGNED AND DATED COPY OF THE CANCELLATION NOTICE (AVAILABLE IN THE REGISTRAR'S OFFICE), OR MAIL OR DELIVER ANOTHER WRITTEN NOTICE, OR SEND A TELEGRAM. IF IT IS MAILED, IT IS DEEMED EFFECTIVE WHEN IT IS DEPOSITED IN THE MAIL PROPERLY WITH PREPAID POSTAGE PAID. THE ENROLLMENT AGREEMENT MAY BE TERMINATED BY THE COLLEGE FOR UNSATISFACTORY ACADEMIC PROGRESS, POOR ATTENDANCE, USE OF CONTROLLED SUBSTANCES ON CAMPUS, CONDUCT DETRIMENTAL TO THE COLLEGE, FAILURE TO COMPLY WITH FINANCIAL AID REGULATIONS OR NON-OBSERVANCE OF OTHER STUDENT REGULATIONS. IF YOU ARE DISMISSED, YOU MAY APPEAL TO THE APPEALS COMMITTEE. A FINAL DECISION WILL BE MADE ACCORDING TO SCHOOL POLICY. MORE INFORMATION IS AVAILABLE IN THE COLLEGE'S CATALOG.

WEST COAST ULTRASOUND INSTITUTE
 ONTARIO BRANCH CAMPUS
 SCHOOL PERFORMANCE FACT SHEET
 2017-18 ACADEMIC YEAR



MAGNETIC RESONANCE IMAGING (LONG) DIPLOMA PROGRAM

ON-TIME COMPLETION RATES

Calendar Year	# OF STUDENTS WHO BEGAN PROGRAM ¹	STUDENTS AVAILABLE FOR GRADUATION ²	# OF ON-TIME GRADUATES ³	ON-TIME COMPLETION RATE ⁴
2015	0	0	0	0
2016	0	0	0	0

STUDENTS COMPLETING WITHIN 150% OF THE PUBLISHED PROGRAM LENGTH

Calendar Year	# OF STUDENTS WHO BEGAN PROGRAM ¹	STUDENTS AVAILABLE FOR GRADUATION ²	150% GRADUATES ⁵	150% COMPLETION RATE ⁶
2013	0	0	0	0
2014	0	0	0	0
2015	0	0	0	0
2016	0	0	0	0

STUDENT'S INITIALS: _____ DATE: _____
 INITIAL ONLY AFTER YOU HAVE HAD SUFFICIENT TIME TO
 READ AND UNDERSTAND THE INFORMATION

JOB PLACEMENT RATES

Calendar Year	# OF STUDENTS WHO BEGAN PROGRAM ¹	# OF GRADUATES ⁷	GRADUATES AVAILABLE FOR EMPLOYMENT ⁸	GRADUATES EMPLOYED IN THE FIELD ⁹	PLACEMENT RATE ¹⁰
2015	0	0	0	0	0
2016	0	0	0	0	0

YOU MAY OBTAIN FROM THE INSTITUTION A LIST OF THE EMPLOYMENT POSITIONS DETERMINED TO BE IN THE FIELD FOR WHICH A STUDENT IS RECEIVING EDUCATION AND TRAINING FROM THE OFFICE OF STUDENT SERVICES.

PART TIME VS. FULL TIME EMPLOYMENT

Calendar Year	GRADUATES EMPLOYED IN THE FIELD 20 TO 29 HOURS PER WEEK	GRADUATES EMPLOYED IN THE FIELD AT LEAST 30 HOURS PER WEEK	TOTAL GRADUATES EMPLOYED IN THE FIELD
2015	0	0	0
2016	0	0	0

SINGLE POSITION VS. CONCURRENT AGGREGATED POSITIONS

Calendar Year	GRADUATES EMPLOYED IN THE FIELD IN A SINGLE POSITION	GRADUATES EMPLOYED IN THE FIELD IN CONCURRENT AGGREGATED POSITIONS	TOTAL GRADUATES EMPLOYED IN THE FIELD
2015	0	0	0
2016	0	0	0

SELF-EMPLOYED/FREELANCE POSITIONS

Calendar Year	GRADUATES EMPLOYED WHO ARE SELF-EMPLOYED OR WORKING FREELANCE	TOTAL GRADUATES EMPLOYED IN THE FIELD
2015	0	0
2016	0	0

SCHOOL PERFORMANCE FACT SHEET DEFINITIONS:

ON-TIME COMPLETION RATES

Calendar Year	# OF STUDENTS WHO BEGAN PROGRAM ¹	STUDENTS AVAILABLE FOR GRADUATION ²	# OF ON-TIME GRADUATES ³	ON-TIME COMPLETION RATE ⁴
---------------	--	--	-------------------------------------	--------------------------------------

1“NUMBER OF STUDENTS WHO BEGAN PROGRAM” IS THE NUMBER OF STUDENTS WHO BEGAN WHO ARE SCHEDULED TO COMPLETE THE PROGRAM WITHIN THE REPORTING CALENDAR YEAR.

2 “STUDENTS AVAILABLE FOR GRADUATION” IS THE NUMBER OF STUDENTS WHO BEGAN THE PROGRAM MINUS THE NUMBER OF “STUDENTS UNAVAILABLE FOR GRADUATION”, WHICH MEANS STUDENTS WHO HAVE DIED, BEEN INCARCERATED, OR CALLED TO ACTIVE MILITARY DUTY.

3“GRADUATES” IS THE NUMBER OF STUDENTS WHO COMPLETED THE PROGRAM WITHIN 100% OF THE PUBLISHED LENGTH.

4“COMPLETION RATE” IS THE NUMBER OF GRADUATES DIVIDED BY THE NUMBER OF “STUDENTS AVAILABLE FOR GRADUATION”.

STUDENTS COMPLETING WITHIN 150% OF THE PUBLISHED PROGRAM LENGTH

Calendar Year	# OF STUDENTS WHO BEGAN PROGRAM ¹	STUDENTS AVAILABLE FOR GRADUATION ²	150% GRADUATES ⁵	150% COMPLETION RATE ⁶
---------------	--	--	-----------------------------	-----------------------------------

5“150% GRADUATES RATE” IS THE NUMBER OF STUDENTS WHO COMPLETED THE PROGRAM WITHIN 101%-150% OF THE PUBLISHED PROGRAM RATE.

6“150% COMPLETION RATE” IS THE PERCENTAGE OF STUDENTS WHO COMPLETED THE PROGRAM IN THE REPORTED CALENDAR YEAR WITHIN 101% -150% OF THE PUBLISHED LENGTH.

JOB PLACEMENT RATES

Calendar Year	# OF STUDENTS WHO BEGAN PROGRAM ¹	# OF GRADUATES ⁷	GRADUATES AVAILABLE FOR EMPLOYMENT ⁸	GRADUATES EMPLOYED IN THE FIELD ⁹	PLACEMENT RATE ¹⁰
---------------	--	-----------------------------	---	--	------------------------------

7“# OF GRADUATES” IS THE NUMBER OF STUDENTS WHO COMPLETED THE PROGRAM WITHIN 100% OF THE PUBLISHED LENGTH.

8“GRADUATES AVAILABLE FOR EMPLOYMENT” MEANS THE NUMBER OF GRADUATES MINUS THE NUMBER OF GRADUATES UNAVAILABLE FOR EMPLOYMENT. GRADUATES UNAVAILABLE FOR EMPLOYMENT MEANS GRADUATES WHO HAVE DIED, BECOME INCARCERATED, ARE CALLED TO ACTIVE MILITARY DUTY, OR ARE INTERNATIONAL STUDENTS WHO DO NOT HAVE A VISA ALLOWING EMPLOYMENT.

9“GRADUATES EMPLOYED IN THE FIELD” ARE GRADUATES WHO REPORT THAT THEY ARE EMPLOYED WITHIN SIX MONTHS OF GRADUATION IN A POSITION REQUIRING THE SKILLS THEY OBTAINED THROUGH THE EDUCATION PROVIDED BY THE SCHOOL.

10“PLACEMENT RATE” IS THE NUMBER OF EMPLOYED GRADUATES DIVIDED BY THE “GRADUATES AVAILABLE FOR EMPLOYMENT”.

INSTITUTIONAL EMPLOYMENT

Calendar Year	GRADUATES EMPLOYED IN THE FIELD WHO ARE EMPLOYED BY THE INSTITUTION, AN EMPLOYER OWNED BY THIS INSTITUTION, OR AN EMPLOYER WHO SHARES OWNERSHIP WITH THE INSTITUTION	TOTAL GRADUATES EMPLOYED IN THE FIELD
2015	0	0
2016	0	0

STUDENT'S INITIALS: _____ DATE: _____
 INITIAL ONLY AFTER YOU HAVE HAD SUFFICIENT TIME TO
 READ AND UNDERSTAND THE INFORMATION

SALARY AND WAGE INFORMATION

Year	GRADUATES AVAILABLE FOR EMPLOYMENT ⁸	GRADUATES EMPLOYED IN THE FIELD ⁹	BELOW \$30,000	\$30,000 TO 34,999	\$35,000 TO 39,999	\$40,000 TO 44,999	\$45,000 TO 49,999	\$50,000 TO 54,999	ABOVE \$55,000	STUDENTS NOT REPORTING SALARY
2016	0	0	0	0	0	0	0	0	0	0
2016	0	0	0	0	0	0	0	0	0	0

STUDENT'S INITIALS: _____ DATE: _____
 INITIAL ONLY AFTER YOU HAVE HAD SUFFICIENT TIME TO
 READ AND UNDERSTAND THE INFORMATION

COST OF EDUCATIONAL PROGRAM

TOTAL CHARGES FOR THE PROGRAM FOR STUDENTS COMPLETING ON-TIME IN 2016. TOTAL CHARGES MAY BE HIGHER FOR STUDENTS THAT DO NOT COMPLETE ON-TIME.
\$27,557.00

STUDENT'S INITIALS: _____ DATE: _____
 INITIAL ONLY AFTER YOU HAVE HAD SUFFICIENT TIME TO
 READ AND UNDERSTAND THE INFORMATION

FEDERAL STUDENT LOAN DEBT AT WCU

% OF STUDENTS WHO DEFAULTED ON FEDERAL LOANS AT THIS SCHOOL	% OF STUDENTS ENROLLED IN 2016 WHO TOOK OUT FEDERAL LOANS TO PAY FOR THIS PROGRAM	% OF GRADUATES IN 2016 WHO TOOK OUT FEDERAL STUDENT LOANS TO PAY FOR THIS PROGRAM	AVERAGE FEDERAL LOAN DEBT OF 2016 GRADUATES WHO TOOK OUT FEDERAL LOANS AT THIS INSTITUTION
5.4%	89%	100%	\$16,500.00

STUDENT'S INITIALS: _____ DATE: _____
 INITIAL ONLY AFTER YOU HAVE HAD SUFFICIENT TIME TO
 READ AND UNDERSTAND THE INFORMATION

THIS FACT SHEET IS FILED WITH THE BUREAU FOR PRIVATE POSTSECONDARY EDUCATION. REGARDLESS OF ANY INFORMATION YOU MAY HAVE RELATING TO COMPLETION RATES, PLACEMENT RATES, STARTING SALARIES, OR LICENSE EXAM PASSAGE RATES, THIS FACT SHEET CONTAINS THE INFORMATION AS CALCULATED PURSUANT TO STATE LAW.

ANY QUESTIONS A STUDENT MAY HAVE REGARDING THIS FACT SHEET THAT HAVE NOT BEEN SATISFACTORILY ANSWERED BY THIS INSTITUTION MAY BE DIRECTED TO THE BUREAU FOR PRIVATE POSTSECONDARY EDUCATION AT 2535 CAPITOL OAKS DRIVE, SUITE 400, SACRAMENTO, CA 95833, WWW.BPPE.CA.GOV, TOLL-FREE TELEPHONE NUMBER (888) 370-7589 OR BY FAX (916) 263-1897.

 STUDENT NAME-PRINT

 STUDENT SIGNATURE

 DATE

 SCHOOL OFFICIAL

 DATE

WEST COAST ULTRASOUND INSTITUTE
291 S. LA CIENEGA BLVD., SUITE 500
BEVERLY HILLS, CA 90211
(310) 289-5123W
WW.WCUI.EDU

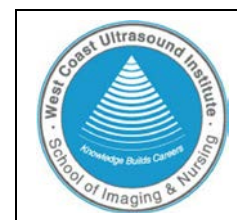


WEST COAST ULTRASOUND INSTITUTE
3700 E. INLAND EMPIRE BLVD., SUITE 235
ONTARIO, CA 91764
(909) 483-3808
WW.WCUI.EDU

STUDENT'S RIGHT TO CANCEL:

A STUDENT HAS THE RIGHT TO CANCEL THE ENROLLMENT AGREEMENT AND OBTAIN A REFUND OF CHARGES PAID THROUGH ATTENDANCE AT THE FIRST CLASS SESSION, OR THE SEVENTH DAY AFTER ENROLLMENT, WHICHEVER IS LATER. IF A STUDENT HAS RECEIVED FEDERAL STUDENT FINANCIAL AID FUNDS, THE STUDENT IS ENTITLED TO A REFUND OF MONEYS NOT PAID FROM FEDERAL STUDENT FINANCIAL AID PROGRAM FUNDS. TO CANCEL THIS ENROLLMENT AGREEMENT AND/OR TERMINATE THE COURSE OF STUDY, THE STUDENT MUST MAIL OR DELIVER A SIGNED AND DATED COPY OF THE CANCELLATION NOTICE (AVAILABLE IN THE REGISTRAR'S OFFICE), OR MAIL OR DELIVER ANOTHER WRITTEN NOTICE, OR SEND A TELEGRAM. IF IT IS MAILED, IT IS DEEMED EFFECTIVE WHEN IT IS DEPOSITED IN THE MAIL PROPERLY WITH PREPAID POSTAGE PAID. THE ENROLLMENT AGREEMENT MAY BE TERMINATED BY THE COLLEGE FOR UNSATISFACTORY ACADEMIC PROGRESS, POOR ATTENDANCE, USE OF CONTROLLED SUBSTANCES ON CAMPUS, CONDUCT DETRIMENTAL TO THE COLLEGE, FAILURE TO COMPLY WITH FINANCIAL AID REGULATIONS OR NON-OBSERVANCE OF OTHER STUDENT REGULATIONS. IF YOU ARE DISMISSED, YOU MAY APPEAL TO THE APPEALS COMMITTEE. A FINAL DECISION WILL BE MADE ACCORDING TO SCHOOL POLICY. MORE INFORMATION IS AVAILABLE IN THE COLLEGE'S CATALOG.

WEST COAST ULTRASOUND INSTITUTE
 BEVERLY HILLS CAMPUS
 SCHOOL PERFORMANCE FACT SHEET
 2017-18 ACADEMIC YEAR



MAGNETIC RESONANCE IMAGING (SHORT) DIPLOMA PROGRAM

ON-TIME COMPLETION RATES

Calendar Year	# OF STUDENTS WHO BEGAN PROGRAM ¹	STUDENTS AVAILABLE FOR GRADUATION ²	# OF ON-TIME GRADUATES ³	ON-TIME COMPLETION RATE ⁴
2015	3	3	2	67%
2016	2	2	2	100%

STUDENTS COMPLETING WITHIN 150% OF THE PUBLISHED PROGRAM LENGTH

Calendar Year	# OF STUDENTS WHO BEGAN PROGRAM ¹	STUDENTS AVAILABLE FOR GRADUATION ²	150% GRADUATES ⁵	150% COMPLETION RATE ⁶
2013	0	0	0	0
2014	0	0	0	0
2015	0	0	0	0
2016	0	0	0	0

STUDENT'S INITIALS: _____ DATE: _____
 INITIAL ONLY AFTER YOU HAVE HAD SUFFICIENT TIME TO
 READ AND UNDERSTAND THE INFORMATION

JOB PLACEMENT RATES

Calendar Year	# OF STUDENTS WHO BEGAN PROGRAM ¹	# OF GRADUATES ⁷	GRADUATES AVAILABLE FOR EMPLOYMENT ⁸	GRADUATES EMPLOYED IN THE FIELD ⁹	PLACEMENT RATE ¹⁰
2015	3	2	2	2	100%
2016	2	2	2	1	50%

YOU MAY OBTAIN FROM THE INSTITUTION A LIST OF THE EMPLOYMENT POSITIONS DETERMINED TO BE IN THE FIELD FOR WHICH A STUDENT IS RECEIVING EDUCATION AND TRAINING FROM THE OFFICE OF STUDENT SERVICES.

PART TIME VS. FULL TIME EMPLOYMENT

Calendar Year	GRADUATES EMPLOYED IN THE FIELD 20 TO 29 HOURS PER WEEK	GRADUATES EMPLOYED IN THE FIELD AT LEAST 30 HOURS PER WEEK	TOTAL GRADUATES EMPLOYED IN THE FIELD
2015	1	1	2
2016	1	0	1

SINGLE POSITION VS. CONCURRENT AGGREGATED POSITIONS

Calendar Year	GRADUATES EMPLOYED IN THE FIELD IN A SINGLE POSITION	GRADUATES EMPLOYED IN THE FIELD IN CONCURRENT AGGREGATED POSITIONS	TOTAL GRADUATES EMPLOYED IN THE FIELD
2015	2	0	2
2016	1	0	1

SELF-EMPLOYED/FREELANCE POSITIONS

Calendar Year	GRADUATES EMPLOYED WHO ARE SELF-EMPLOYED OR WORKING FREELANCE	TOTAL GRADUATES EMPLOYED IN THE FIELD
2015	0	0
2016	0	0

SCHOOL PERFORMANCE FACT SHEET DEFINITIONS:

ON-TIME COMPLETION RATES

Calendar Year	# OF STUDENTS WHO BEGAN PROGRAM ¹	STUDENTS AVAILABLE FOR GRADUATION ²	# OF ON-TIME GRADUATES ³	ON-TIME COMPLETION RATE ⁴
---------------	--	--	-------------------------------------	--------------------------------------

1“NUMBER OF STUDENTS WHO BEGAN PROGRAM” IS THE NUMBER OF STUDENTS WHO BEGAN WHO ARE SCHEDULED TO COMPLETE THE PROGRAM WITHIN THE REPORTING CALENDAR YEAR.

2 “STUDENTS AVAILABLE FOR GRADUATION” IS THE NUMBER OF STUDENTS WHO BEGAN THE PROGRAM MINUS THE NUMBER OF “STUDENTS UNAVAILABLE FOR GRADUATION”, WHICH MEANS STUDENTS WHO HAVE DIED, BEEN INCARCERATED, OR CALLED TO ACTIVE MILITARY DUTY.

3“GRADUATES” IS THE NUMBER OF STUDENTS WHO COMPLETED THE PROGRAM WITHIN 100% OF THE PUBLISHED LENGTH.

4“COMPLETION RATE” IS THE NUMBER OF GRADUATES DIVIDED BY THE NUMBER OF “STUDENTS AVAILABLE FOR GRADUATION”.

STUDENTS COMPLETING WITHIN 150% OF THE PUBLISHED PROGRAM LENGTH

Calendar Year	# OF STUDENTS WHO BEGAN PROGRAM ¹	STUDENTS AVAILABLE FOR GRADUATION ²	150% GRADUATES ⁵	150% COMPLETION RATE ⁶
---------------	--	--	-----------------------------	-----------------------------------

5“150% GRADUATES RATE” IS THE NUMBER OF STUDENTS WHO COMPLETED THE PROGRAM WITHIN 101%-150% OF THE PUBLISHED PROGRAM RATE.

6“150% COMPLETION RATE” IS THE PERCENTAGE OF STUDENTS WHO COMPLETED THE PROGRAM IN THE REPORTED CALENDAR YEAR WITHIN 101% -150% OF THE PUBLISHED LENGTH.

JOB PLACEMENT RATES

Calendar Year	# OF STUDENTS WHO BEGAN PROGRAM ¹	# OF GRADUATES ⁷	GRADUATES AVAILABLE FOR EMPLOYMENT ⁸	GRADUATES EMPLOYED IN THE FIELD ⁹	PLACEMENT RATE ¹⁰
---------------	--	-----------------------------	---	--	------------------------------

7“# OF GRADUATES” IS THE NUMBER OF STUDENTS WHO COMPLETED THE PROGRAM WITHIN 100% OF THE PUBLISHED LENGTH.

8“GRADUATES AVAILABLE FOR EMPLOYMENT” MEANS THE NUMBER OF GRADUATES MINUS THE NUMBER OF GRADUATES UNAVAILABLE FOR EMPLOYMENT. GRADUATES UNAVAILABLE FOR EMPLOYMENT MEANS GRADUATES WHO HAVE DIED, BECOME INCARCERATED, ARE CALLED TO ACTIVE MILITARY DUTY, OR ARE INTERNATIONAL STUDENTS WHO DO NOT HAVE A VISA ALLOWING EMPLOYMENT.

9“GRADUATES EMPLOYED IN THE FIELD” ARE GRADUATES WHO REPORT THAT THEY ARE EMPLOYED WITHIN SIX MONTHS OF GRADUATION IN A POSITION REQUIRING THE SKILLS THEY OBTAINED THROUGH THE EDUCATION PROVIDED BY THE SCHOOL.

10“PLACEMENT RATE” IS THE NUMBER OF EMPLOYED GRADUATES DIVIDED BY THE “GRADUATES AVAILABLE FOR EMPLOYMENT”.

INSTITUTIONAL EMPLOYMENT

Calendar Year	GRADUATES EMPLOYED IN THE FIELD WHO ARE EMPLOYED BY THE INSTITUTION, AN EMPLOYER OWNED BY THIS INSTITUTION, OR AN EMPLOYER WHO SHARES OWNERSHIP WITH THE INSTITUTION	TOTAL GRADUATES EMPLOYED IN THE FIELD
2015	0	0
2016	0	0

STUDENT'S INITIALS: _____ DATE: _____
 INITIAL ONLY AFTER YOU HAVE HAD SUFFICIENT TIME TO
 READ AND UNDERSTAND THE INFORMATION

SALARY AND WAGE INFORMATION

Year	GRADUATES AVAILABLE FOR EMPLOYMENT ⁸	GRADUATES EMPLOYED IN THE FIELD ⁹	BELOW \$30,000	\$30,000 TO 34,999	\$35,000 TO 39,999	\$40,000 TO 44,999	\$45,000 TO \$49,999	\$50,000 TO 54,999	ABOVE \$55,000	STUDENTS NOT REPORTING SALARY
2015	2	2	1	0	0	0	1	0	0	0
2016	2	1	1	0	0	0	0	0	0	0

STUDENT'S INITIALS: _____ DATE: _____
 INITIAL ONLY AFTER YOU HAVE HAD SUFFICIENT TIME TO
 READ AND UNDERSTAND THE INFORMATION

COST OF EDUCATIONAL PROGRAM

TOTAL CHARGES FOR THE PROGRAM FOR STUDENTS COMPLETING ON-TIME IN 2016. TOTAL CHARGES MAY BE HIGHER FOR STUDENTS THAT DO NOT COMPLETE ON-TIME.
\$19,245.00

STUDENT'S INITIALS: _____ DATE: _____
 INITIAL ONLY AFTER YOU HAVE HAD SUFFICIENT TIME TO
 READ AND UNDERSTAND THE INFORMATION

FEDERAL STUDENT LOAN DEBT AT WCU

% OF STUDENTS WHO DEFAULTED ON FEDERAL LOANS AT THIS SCHOOL	% OF STUDENTS ENROLLED IN 2016 WHO TOOK OUT FEDERAL LOANS TO PAY FOR THIS PROGRAM	% OF GRADUATES IN 2016 WHO TOOK OUT FEDERAL STUDENT LOANS TO PAY FOR THIS PROGRAM	AVERAGE FEDERAL LOAN DEBT OF 2016 GRADUATES WHO TOOK OUT FEDERAL LOANS AT THIS INSTITUTION
5.4%	94%	100%	\$9,500.00

STUDENT'S INITIALS: _____ DATE: _____
 INITIAL ONLY AFTER YOU HAVE HAD SUFFICIENT TIME TO
 READ AND UNDERSTAND THE INFORMATION

THIS FACT SHEET IS FILED WITH THE BUREAU FOR PRIVATE POSTSECONDARY EDUCATION. REGARDLESS OF ANY INFORMATION YOU MAY HAVE RELATING TO COMPLETION RATES, PLACEMENT RATES, STARTING SALARIES, OR LICENSE EXAM PASSAGE RATES, THIS FACT SHEET CONTAINS THE INFORMATION AS CALCULATED PURSUANT TO STATE LAW.

ANY QUESTIONS A STUDENT MAY HAVE REGARDING THIS FACT SHEET THAT HAVE NOT BEEN SATISFACTORILY ANSWERED BY THIS INSTITUTION MAY BE DIRECTED TO THE BUREAU FOR PRIVATE POSTSECONDARY EDUCATION AT 2535 CAPITOL OAKS DRIVE, SUITE 400, SACRAMENTO, CA 95833, WWW.BPPE.CA.GOV, TOLL-FREE TELEPHONE NUMBER (888) 370-7589 OR BY FAX (916) 263-1897.

 STUDENT NAME-PRINT

 STUDENT SIGNATURE

 DATE

 SCHOOL OFFICIAL

 DATE

WEST COAST ULTRASOUND INSTITUTE
291 S. LA CIENEGA BLVD., SUITE 500
BEVERLY HILLS, CA 90211
(310) 289-5123W
WW.WCUI.EDU



WEST COAST ULTRASOUND INSTITUTE
3700 E. INLAND EMPIRE BLVD., SUITE 235
ONTARIO, CA 91764
(909) 483-3808
WW.WCUI.EDU

STUDENT'S RIGHT TO CANCEL:

A STUDENT HAS THE RIGHT TO CANCEL THE ENROLLMENT AGREEMENT AND OBTAIN A REFUND OF CHARGES PAID THROUGH ATTENDANCE AT THE FIRST CLASS SESSION, OR THE SEVENTH DAY AFTER ENROLLMENT, WHICHEVER IS LATER. IF A STUDENT HAS RECEIVED FEDERAL STUDENT FINANCIAL AID FUNDS, THE STUDENT IS ENTITLED TO A REFUND OF MONEYS NOT PAID FROM FEDERAL STUDENT FINANCIAL AID PROGRAM FUNDS. TO CANCEL THIS ENROLLMENT AGREEMENT AND/OR TERMINATE THE COURSE OF STUDY, THE STUDENT MUST MAIL OR DELIVER A SIGNED AND DATED COPY OF THE CANCELLATION NOTICE (AVAILABLE IN THE REGISTRAR'S OFFICE), OR MAIL OR DELIVER ANOTHER WRITTEN NOTICE, OR SEND A TELEGRAM. IF IT IS MAILED, IT IS DEEMED EFFECTIVE WHEN IT IS DEPOSITED IN THE MAIL PROPERLY WITH PREPAID POSTAGE PAID. THE ENROLLMENT AGREEMENT MAY BE TERMINATED BY THE COLLEGE FOR UNSATISFACTORY ACADEMIC PROGRESS, POOR ATTENDANCE, USE OF CONTROLLED SUBSTANCES ON CAMPUS, CONDUCT DETRIMENTAL TO THE COLLEGE, FAILURE TO COMPLY WITH FINANCIAL AID REGULATIONS OR NON-OBSERVANCE OF OTHER STUDENT REGULATIONS. IF YOU ARE DISMISSED, YOU MAY APPEAL TO THE APPEALS COMMITTEE. A FINAL DECISION WILL BE MADE ACCORDING TO SCHOOL POLICY. MORE INFORMATION IS AVAILABLE IN THE COLLEGE'S CATALOG.

WEST COAST ULTRASOUND INSTITUTE
 ONTARIO BRANCH CAMPUS
 SCHOOL PERFORMANCE FACT SHEET
 2017-18 ACADEMIC YEAR



MAGNETIC RESONANCE IMAGING (SHORT) DIPLOMA PROGRAM

ON-TIME COMPLETION RATES

Calendar Year	# OF STUDENTS WHO BEGAN PROGRAM ¹	STUDENTS AVAILABLE FOR GRADUATION ²	# OF ON-TIME GRADUATES ³	ON-TIME COMPLETION RATE ⁴
2015	0	0	0	0
2016	5	5	5	100%

STUDENTS COMPLETING WITHIN 150% OF THE PUBLISHED PROGRAM LENGTH

Calendar Year	# OF STUDENTS WHO BEGAN PROGRAM ¹	STUDENTS AVAILABLE FOR GRADUATION ²	150% GRADUATES ⁵	150% COMPLETION RATE ⁶
2013	0	0	0	0
2014	0	0	0	0
2015	0	0	0	0
2016	0	0	0	0

STUDENT'S INITIALS: _____ DATE: _____
 INITIAL ONLY AFTER YOU HAVE HAD SUFFICIENT TIME TO
 READ AND UNDERSTAND THE INFORMATION

JOB PLACEMENT RATES

Calendar Year	# OF STUDENTS WHO BEGAN PROGRAM ¹	# OF GRADUATES ⁷	GRADUATES AVAILABLE FOR EMPLOYMENT ⁸	GRADUATES EMPLOYED IN THE FIELD ⁹	PLACEMENT RATE ¹⁰
2015	0	0	0	0	0
2016	5	5	5	5	100%

YOU MAY OBTAIN FROM THE INSTITUTION A LIST OF THE EMPLOYMENT POSITIONS DETERMINED TO BE IN THE FIELD FOR WHICH A STUDENT IS RECEIVING EDUCATION AND TRAINING FROM THE OFFICE OF STUDENT SERVICES.

PART TIME VS. FULL TIME EMPLOYMENT

Calendar Year	GRADUATES EMPLOYED IN THE FIELD 20 TO 29 HOURS PER WEEK	GRADUATES EMPLOYED IN THE FIELD AT LEAST 30 HOURS PER WEEK	TOTAL GRADUATES EMPLOYED IN THE FIELD
2015	0	0	0
2016	1	4	5

SINGLE POSITION VS. CONCURRENT AGGREGATED POSITIONS

Calendar Year	GRADUATES EMPLOYED IN THE FIELD IN A SINGLE POSITION	GRADUATES EMPLOYED IN THE FIELD IN CONCURRENT AGGREGATED POSITIONS	TOTAL GRADUATES EMPLOYED IN THE FIELD
2015	0	0	0
2016	4	1	5

SELF-EMPLOYED/FREELANCE POSITIONS

Calendar Year	GRADUATES EMPLOYED WHO ARE SELF-EMPLOYED OR WORKING FREELANCE	TOTAL GRADUATES EMPLOYED IN THE FIELD
2015	0	0
2016	0	0

SCHOOL PERFORMANCE FACT SHEET DEFINITIONS:

ON-TIME COMPLETION RATES

Calendar Year	# OF STUDENTS WHO BEGAN PROGRAM ¹	STUDENTS AVAILABLE FOR GRADUATION ²	# OF ON-TIME GRADUATES ³	ON-TIME COMPLETION RATE ⁴
---------------	--	--	-------------------------------------	--------------------------------------

1“NUMBER OF STUDENTS WHO BEGAN PROGRAM” IS THE NUMBER OF STUDENTS WHO BEGAN WHO ARE SCHEDULED TO COMPLETE THE PROGRAM WITHIN THE REPORTING CALENDAR YEAR.

2 “STUDENTS AVAILABLE FOR GRADUATION” IS THE NUMBER OF STUDENTS WHO BEGAN THE PROGRAM MINUS THE NUMBER OF “STUDENTS UNAVAILABLE FOR GRADUATION”, WHICH MEANS STUDENTS WHO HAVE DIED, BEEN INCARCERATED, OR CALLED TO ACTIVE MILITARY DUTY.

3“GRADUATES” IS THE NUMBER OF STUDENTS WHO COMPLETED THE PROGRAM WITHIN 100% OF THE PUBLISHED LENGTH.

4“COMPLETION RATE” IS THE NUMBER OF GRADUATES DIVIDED BY THE NUMBER OF “STUDENTS AVAILABLE FOR GRADUATION”.

STUDENTS COMPLETING WITHIN 150% OF THE PUBLISHED PROGRAM LENGTH

Calendar Year	# OF STUDENTS WHO BEGAN PROGRAM ¹	STUDENTS AVAILABLE FOR GRADUATION ²	150% GRADUATES ⁵	150% COMPLETION RATE ⁶
---------------	--	--	-----------------------------	-----------------------------------

5“150% GRADUATES RATE” IS THE NUMBER OF STUDENTS WHO COMPLETED THE PROGRAM WITHIN 101%-150% OF THE PUBLISHED PROGRAM RATE.

6“150% COMPLETION RATE” IS THE PERCENTAGE OF STUDENTS WHO COMPLETED THE PROGRAM IN THE REPORTED CALENDAR YEAR WITHIN 101% -150% OF THE PUBLISHED LENGTH.

JOB PLACEMENT RATES

Calendar Year	# OF STUDENTS WHO BEGAN PROGRAM ¹	# OF GRADUATES ⁷	GRADUATES AVAILABLE FOR EMPLOYMENT ⁸	GRADUATES EMPLOYED IN THE FIELD ⁹	PLACEMENT RATE ¹⁰
---------------	--	-----------------------------	---	--	------------------------------

7“# OF GRADUATES” IS THE NUMBER OF STUDENTS WHO COMPLETED THE PROGRAM WITHIN 100% OF THE PUBLISHED LENGTH.

8“GRADUATES AVAILABLE FOR EMPLOYMENT” MEANS THE NUMBER OF GRADUATES MINUS THE NUMBER OF GRADUATES UNAVAILABLE FOR EMPLOYMENT. GRADUATES UNAVAILABLE FOR EMPLOYMENT MEANS GRADUATES WHO HAVE DIED, BECOME INCARCERATED, ARE CALLED TO ACTIVE MILITARY DUTY, OR ARE INTERNATIONAL STUDENTS WHO DO NOT HAVE A VISA ALLOWING EMPLOYMENT.

9“GRADUATES EMPLOYED IN THE FIELD” ARE GRADUATES WHO REPORT THAT THEY ARE EMPLOYED WITHIN SIX MONTHS OF GRADUATION IN A POSITION REQUIRING THE SKILLS THEY OBTAINED THROUGH THE EDUCATION PROVIDED BY THE SCHOOL.

10“PLACEMENT RATE” IS THE NUMBER OF EMPLOYED GRADUATES DIVIDED BY THE “GRADUATES AVAILABLE FOR EMPLOYMENT”.

INSTITUTIONAL EMPLOYMENT

Calendar Year	GRADUATES EMPLOYED IN THE FIELD WHO ARE EMPLOYED BY THE INSTITUTION, AN EMPLOYER OWNED BY THIS INSTITUTION, OR AN EMPLOYER WHO SHARES OWNERSHIP WITH THE INSTITUTION	TOTAL GRADUATES EMPLOYED IN THE FIELD
2015	0	0
2016	0	0

STUDENT'S INITIALS: _____ DATE: _____
 INITIAL ONLY AFTER YOU HAVE HAD SUFFICIENT TIME TO
 READ AND UNDERSTAND THE INFORMATION

SALARY AND WAGE INFORMATION

Year	GRADUATES AVAILABLE FOR EMPLOYMENT ⁸	GRADUATES EMPLOYED IN THE FIELD ⁹	BELOW \$30,000	\$30,000 TO 34,999	\$35,000 TO 39,999	\$40,000 TO 44,999	\$45,000 TO \$49,999	\$50,000 TO 54,999	ABOVE \$55,000	STUDENTS NOT REPORTING SALARY
2015	0	0	0	0	0	0	0	0	0	0
2016	5	5	1	0	0	0	0	0	4	0

STUDENT'S INITIALS: _____ DATE: _____
 INITIAL ONLY AFTER YOU HAVE HAD SUFFICIENT TIME TO
 READ AND UNDERSTAND THE INFORMATION

COST OF EDUCATIONAL PROGRAM

TOTAL CHARGES FOR THE PROGRAM FOR STUDENTS COMPLETING ON-TIME IN 2016. TOTAL CHARGES MAY BE HIGHER FOR STUDENTS THAT DO NOT COMPLETE ON-TIME.
\$19,245.00

STUDENT'S INITIALS: _____ DATE: _____
 INITIAL ONLY AFTER YOU HAVE HAD SUFFICIENT TIME TO
 READ AND UNDERSTAND THE INFORMATION

FEDERAL STUDENT LOAN DEBT AT WCUI

% OF STUDENTS WHO DEFAULTED ON FEDERAL LOANS AT THIS SCHOOL	% OF STUDENTS ENROLLED IN 2016 WHO TOOK OUT FEDERAL LOANS TO PAY FOR THIS PROGRAM	% OF GRADUATES IN 2016 WHO TOOK OUT FEDERAL STUDENT LOANS TO PAY FOR THIS PROGRAM	AVERAGE FEDERAL LOAN DEBT OF 2016 GRADUATES WHO TOOK OUT FEDERAL LOANS AT THIS INSTITUTION
5.4%	94%	100%	\$9,500.00

STUDENT'S INITIALS: _____ DATE: _____
 INITIAL ONLY AFTER YOU HAVE HAD SUFFICIENT TIME TO
 READ AND UNDERSTAND THE INFORMATION

THIS FACT SHEET IS FILED WITH THE BUREAU FOR PRIVATE POSTSECONDARY EDUCATION. REGARDLESS OF ANY INFORMATION YOU MAY HAVE RELATING TO COMPLETION RATES, PLACEMENT RATES, STARTING SALARIES, OR LICENSE EXAM PASSAGE RATES, THIS FACT SHEET CONTAINS THE INFORMATION AS CALCULATED PURSUANT TO STATE LAW.

ANY QUESTIONS A STUDENT MAY HAVE REGARDING THIS FACT SHEET THAT HAVE NOT BEEN SATISFACTORILY ANSWERED BY THIS INSTITUTION MAY BE DIRECTED TO THE BUREAU FOR PRIVATE POSTSECONDARY EDUCATION AT 2535 CAPITOL OAKS DRIVE, SUITE 400, SACRAMENTO, CA 95833, WWW.BPPE.CA.GOV, TOLL-FREE TELEPHONE NUMBER (888) 370-7589 OR BY FAX (916) 263-1897.

 STUDENT NAME-PRINT

 STUDENT SIGNATURE

 DATE

 SCHOOL OFFICIAL

 DATE

WEST COAST ULTRASOUND INSTITUTE
291 S. LA CIENEGA BLVD., SUITE 500
BEVERLY HILLS, CA 90211
(310) 289-5123W
WW.WCUI.EDU



WEST COAST ULTRASOUND INSTITUTE
3700 E. INLAND EMPIRE BLVD., SUITE 235
ONTARIO, CA 91764
(909) 483-3808
WW.WCUI.EDU

STUDENT'S RIGHT TO CANCEL:

A STUDENT HAS THE RIGHT TO CANCEL THE ENROLLMENT AGREEMENT AND OBTAIN A REFUND OF CHARGES PAID THROUGH ATTENDANCE AT THE FIRST CLASS SESSION, OR THE SEVENTH DAY AFTER ENROLLMENT, WHICHEVER IS LATER. IF A STUDENT HAS RECEIVED FEDERAL STUDENT FINANCIAL AID FUNDS, THE STUDENT IS ENTITLED TO A REFUND OF MONEYS NOT PAID FROM FEDERAL STUDENT FINANCIAL AID PROGRAM FUNDS. TO CANCEL THIS ENROLLMENT AGREEMENT AND/OR TERMINATE THE COURSE OF STUDY, THE STUDENT MUST MAIL OR DELIVER A SIGNED AND DATED COPY OF THE CANCELLATION NOTICE (AVAILABLE IN THE REGISTRAR'S OFFICE), OR MAIL OR DELIVER ANOTHER WRITTEN NOTICE, OR SEND A TELEGRAM. IF IT IS MAILED, IT IS DEEMED EFFECTIVE WHEN IT IS DEPOSITED IN THE MAIL PROPERLY WITH PREPAID POSTAGE PAID. THE ENROLLMENT AGREEMENT MAY BE TERMINATED BY THE COLLEGE FOR UNSATISFACTORY ACADEMIC PROGRESS, POOR ATTENDANCE, USE OF CONTROLLED SUBSTANCES ON CAMPUS, CONDUCT DETRIMENTAL TO THE COLLEGE, FAILURE TO COMPLY WITH FINANCIAL AID REGULATIONS OR NON-OBSERVANCE OF OTHER STUDENT REGULATIONS. IF YOU ARE DISMISSED, YOU MAY APPEAL TO THE APPEALS COMMITTEE. A FINAL DECISION WILL BE MADE ACCORDING TO SCHOOL POLICY. MORE INFORMATION IS AVAILABLE IN THE COLLEGE'S CATALOG.

WEST COAST ULTRASOUND INSTITUTE
 BEVERLY HILLS & ONTARIO CAMPUSES
 SCHOOL PERFORMANCE FACT SHEET
 2017-18 ACADEMIC YEAR



CARDIOVASCULAR TECHNICIAN DIPLOMA PROGRAM
 (NEW PROGRAM. NO DATA AVAILABLE FOR THE REPORTING PERIOD)

ON-TIME COMPLETION RATES

Calendar Year	# OF STUDENTS WHO BEGAN PROGRAM ¹	STUDENTS AVAILABLE FOR GRADUATION ²	# OF ON-TIME GRADUATES ³	ON-TIME COMPLETION RATE ⁴
2015	0	0	0	0
2016	0	0	0	0

STUDENTS COMPLETING WITHIN 150% OF THE PUBLISHED PROGRAM LENGTH

Calendar Year	# OF STUDENTS WHO BEGAN PROGRAM ¹	STUDENTS AVAILABLE FOR GRADUATION ²	150% GRADUATES ⁵	150% COMPLETION RATE ⁶
2012	0	0	0	0
2013	0	0	0	0
2015	0	0	0	0
2016	0	0	0	0

STUDENT'S INITIALS: _____ DATE: _____
 INITIAL ONLY AFTER YOU HAVE HAD SUFFICIENT TIME TO
 READ AND UNDERSTAND THE INFORMATION

JOB PLACEMENT RATES

Calendar Year	# OF STUDENTS WHO BEGAN PROGRAM ¹	# OF GRADUATES ⁷	GRADUATES AVAILABLE FOR EMPLOYMENT ⁸	GRADUATES EMPLOYED IN THE FIELD ⁹	PLACEMENT RATE ¹⁰
2015	0	0	0	0	0
2016	0	0	0	0	0

YOU MAY OBTAIN FROM THE INSTITUTION A LIST OF THE EMPLOYMENT POSITIONS DETERMINED TO BE IN THE FIELD FOR WHICH A STUDENT IS RECEIVING EDUCATION AND TRAINING FROM THE OFFICE OF STUDENT SERVICES.

PART TIME VS. FULL TIME EMPLOYMENT

Calendar Year	GRADUATES EMPLOYED IN THE FIELD 20 TO 29 HOURS PER WEEK	GRADUATES EMPLOYED IN THE FIELD AT LEAST 30 HOURS PER WEEK	TOTAL GRADUATES EMPLOYED IN THE FIELD
2015	0	0	0
2016	0	0	0

SINGLE POSITION VS. CONCURRENT AGGREGATED POSITIONS

Calendar Year	GRADUATES EMPLOYED IN THE FIELD IN A SINGLE POSITION	GRADUATES EMPLOYED IN THE FIELD IN CONCURRENT AGGREGATED POSITIONS	TOTAL GRADUATES EMPLOYED IN THE FIELD
2015	0	0	0
2016	0	0	0

SELF-EMPLOYED/FREELANCE POSITIONS

Calendar Year	GRADUATES EMPLOYED WHO ARE SELF-EMPLOYED OR WORKING FREELANCE	TOTAL GRADUATES EMPLOYED IN THE FIELD
2015	0	0
2016	0	0

SCHOOL PERFORMANCE FACT SHEET DEFINITIONS:

THIS PROGRAM IS NEW. THEREFORE THE NUMBER OF STUDENTS WHO GRADUATE, THE NUMBER OF STUDENTS WHO ARE PLACED, OR THE STARTING SALARY YOU CAN EARN AFTER FINISHING THE EDUCATIONAL PROGRAM ARE UNKNOWN AT THIS TIME. INFORMATION REGARDING GENERAL SALARY AND PLACEMENT STATISTICS MAY BE AVAILABLE FROM GOVERNMENT SOURCES OR FROM THE INSTITUTION, BUT IS NOT EQUIVALENT TO ACTUAL PERFORMANCE DATA. THIS PROGRAM WAS APPROVED BY THE BUREAU ON 11/20/2015. AS OF JULY 1, 2019 TWO FULL YEARS OF DATA FOR THIS PROGRAM WILL BE AVAILABLE.

ON-TIME COMPLETION RATES

Calendar Year	# OF STUDENTS WHO BEGAN PROGRAM ¹	STUDENTS AVAILABLE FOR GRADUATION ²	# OF ON-TIME GRADUATES ³	ON-TIME COMPLETION RATE ⁴
---------------	--	--	-------------------------------------	--------------------------------------

1“NUMBER OF STUDENTS WHO BEGAN PROGRAM” IS THE NUMBER OF STUDENTS WHO BEGAN WHO ARE SCHEDULED TO COMPLETE THE PROGRAM WITHIN THE REPORTING CALENDAR YEAR.

2 “STUDENTS AVAILABLE FOR GRADUATION” IS THE NUMBER OF STUDENTS WHO BEGAN THE PROGRAM MINUS THE NUMBER OF “STUDENTS UNAVAILABLE FOR GRADUATION”, WHICH MEANS STUDENTS WHO HAVE DIED, BEEN INCARCERATED, OR CALLED TO ACTIVE MILITARY DUTY.

3“GRADUATES” IS THE NUMBER OF STUDENTS WHO COMPLETED THE PROGRAM WITHIN 100% OF THE PUBLISHED LENGTH.

4“COMPLETION RATE” IS THE NUMBER OF GRADUATES DIVIDED BY THE NUMBER OF “STUDENTS AVAILABLE FOR GRADUATION”.

STUDENTS COMPLETING WITHIN 150% OF THE PUBLISHED PROGRAM LENGTH

Calendar Year	# OF STUDENTS WHO BEGAN PROGRAM ¹	STUDENTS AVAILABLE FOR GRADUATION ²	150% GRADUATES ⁵	150% COMPLETION RATE ⁶
---------------	--	--	-----------------------------	-----------------------------------

5“150% GRADUATES RATE” IS THE NUMBER OF STUDENTS WHO COMPLETED THE PROGRAM WITHIN 101%-150% OF THE PUBLISHED PROGRAM RATE.

6“150% COMPLETION RATE” IS THE PERCENTAGE OF STUDENTS WHO COMPLETED THE PROGRAM IN THE REPORTED CALENDAR YEAR WITHIN 101% -150% OF THE PUBLISHED LENGTH.

JOB PLACEMENT RATES

Calendar Year	# OF STUDENTS WHO BEGAN PROGRAM ¹	# OF GRADUATES ⁷	GRADUATES AVAILABLE FOR EMPLOYMENT ⁸	GRADUATES EMPLOYED IN THE FIELD ⁹	PLACEMENT RATE ¹⁰
---------------	--	-----------------------------	---	--	------------------------------

7“# OF GRADUATES” IS THE NUMBER OF STUDENTS WHO COMPLETED THE PROGRAM WITHIN 100% OF THE PUBLISHED LENGTH.

8“GRADUATES AVAILABLE FOR EMPLOYMENT” MEANS THE NUMBER OF GRADUATES MINUS THE NUMBER OF GRADUATES UNAVAILABLE FOR EMPLOYMENT. GRADUATES UNAVAILABLE FOR EMPLOYMENT MEANS GRADUATES WHO HAVE DIED, BECOME INCARCERATED, ARE CALLED TO ACTIVE MILITARY DUTY, OR ARE INTERNATIONAL STUDENTS WHO DO NOT HAVE A VISA ALLOWING EMPLOYMENT.

9“GRADUATES EMPLOYED IN THE FIELD” ARE GRADUATES WHO REPORT THAT THEY ARE EMPLOYED WITHIN SIX MONTHS OF GRADUATION IN A POSITION REQUIRING THE SKILLS THEY OBTAINED THROUGH THE EDUCATION PROVIDED BY THE SCHOOL.

10“PLACEMENT RATE” IS THE NUMBER OF EMPLOYED GRADUATES DIVIDED BY THE “GRADUATES AVAILABLE FOR EMPLOYMENT”.

INSTITUTIONAL EMPLOYMENT

Calendar Year	GRADUATES EMPLOYED IN THE FIELD WHO ARE EMPLOYED BY THE INSTITUTION, AN EMPLOYER OWNED BY THIS INSTITUTION, OR AN EMPLOYER WHO SHARES OWNERSHIP WITH THE INSTITUTION	TOTAL GRADUATES EMPLOYED IN THE FIELD
2015	0	0
2016	0	0

STUDENT'S INITIALS: _____ DATE: _____
 INITIAL ONLY AFTER YOU HAVE HAD SUFFICIENT TIME TO
 READ AND UNDERSTAND THE INFORMATION

SALARY AND WAGE INFORMATION

Year	GRADUATES AVAILABLE FOR EMPLOYMENT ⁸	GRADUATES EMPLOYED IN THE FIELD ⁹	BELOW \$30,000	\$30,000 TO 34,999	\$35,000 TO 39,999	\$40,000 TO 44,999	\$45,000 TO \$49,999	\$50,000 TO 54,999	ABOVE \$55,000	STUDENTS NOT REPORTING SALARY
2015	0	0	0	0	0	0	0	0	0	0
2016	0	0	0	0	0	0	0	0	0	0

STUDENT'S INITIALS: _____ DATE: _____
 INITIAL ONLY AFTER YOU HAVE HAD SUFFICIENT TIME TO
 READ AND UNDERSTAND THE INFORMATION

COST OF EDUCATIONAL PROGRAM

TOTAL CHARGES FOR THE PROGRAM FOR STUDENTS COMPLETING ON-TIME IN 2016. TOTAL CHARGES MAY BE HIGHER FOR STUDENTS THAT DO NOT COMPLETE ON-TIME.
\$11,640.00

STUDENT'S INITIALS: _____ DATE: _____
 INITIAL ONLY AFTER YOU HAVE HAD SUFFICIENT TIME TO
 READ AND UNDERSTAND THE INFORMATION

FEDERAL STUDENT LOAN DEBT AT WCUI

% OF STUDENTS WHO DEFAULTED ON FEDERAL LOANS AT THIS SCHOOL	% OF STUDENTS ENROLLED IN 2016 WHO TOOK OUT FEDERAL LOANS TO PAY FOR THIS PROGRAM	% OF GRADUATES IN 2016 WHO TOOK OUT FEDERAL STUDENT LOANS TO PAY FOR THIS PROGRAM	AVERAGE FEDERAL LOAN DEBT OF 2016 GRADUATES WHO TOOK OUT FEDERAL LOANS AT THIS INSTITUTION
5.4%	0	0	0

STUDENT'S INITIALS: _____ DATE: _____
 INITIAL ONLY AFTER YOU HAVE HAD SUFFICIENT TIME TO
 READ AND UNDERSTAND THE INFORMATION

THIS FACT SHEET IS FILED WITH THE BUREAU FOR PRIVATE POSTSECONDARY EDUCATION. REGARDLESS OF ANY INFORMATION YOU MAY HAVE RELATING TO COMPLETION RATES, PLACEMENT RATES, STARTING SALARIES, OR LICENSE EXAM PASSAGE RATES, THIS FACT SHEET CONTAINS THE INFORMATION AS CALCULATED PURSUANT TO STATE LAW.

ANY QUESTIONS A STUDENT MAY HAVE REGARDING THIS FACT SHEET THAT HAVE NOT BEEN SATISFACTORILY ANSWERED BY THIS INSTITUTION MAY BE DIRECTED TO THE BUREAU FOR PRIVATE POSTSECONDARY EDUCATION AT 2535 CAPITOL OAKS DRIVE, SUITE 400, SACRAMENTO, CA 95833, WWW.BPPE.CA.GOV, TOLL-FREE TELEPHONE NUMBER (888) 370-7589 OR BY FAX (916) 263-1897.

 STUDENT NAME-PRINT

 STUDENT SIGNATURE

 DATE

 SCHOOL OFFICIAL

 DATE

WEST COAST ULTRASOUND INSTITUTE
291 S. LA CIENEGA BLVD., SUITE 500
BEVERLY HILLS, CA 90211
(310) 289-5123W
WW.WCUI.EDU



WEST COAST ULTRASOUND INSTITUTE
3700 E. INLAND EMPIRE BLVD., SUITE 235
ONTARIO, CA 91764
(909) 483-3808
WW.WCUI.EDU

STUDENT'S RIGHT TO CANCEL:

A STUDENT HAS THE RIGHT TO CANCEL THE ENROLLMENT AGREEMENT AND OBTAIN A REFUND OF CHARGES PAID THROUGH ATTENDANCE AT THE FIRST CLASS SESSION, OR THE SEVENTH DAY AFTER ENROLLMENT, WHICHEVER IS LATER. IF A STUDENT HAS RECEIVED FEDERAL STUDENT FINANCIAL AID FUNDS, THE STUDENT IS ENTITLED TO A REFUND OF MONEYS NOT PAID FROM FEDERAL STUDENT FINANCIAL AID PROGRAM FUNDS. TO CANCEL THIS ENROLLMENT AGREEMENT AND/OR TERMINATE THE COURSE OF STUDY, THE STUDENT MUST MAIL OR DELIVER A SIGNED AND DATED COPY OF THE CANCELLATION NOTICE (AVAILABLE IN THE REGISTRAR'S OFFICE), OR MAIL OR DELIVER ANOTHER WRITTEN NOTICE, OR SEND A TELEGRAM. IF IT IS MAILED, IT IS DEEMED EFFECTIVE WHEN IT IS DEPOSITED IN THE MAIL PROPERLY WITH PREPAID POSTAGE PAID. THE ENROLLMENT AGREEMENT MAY BE TERMINATED BY THE COLLEGE FOR UNSATISFACTORY ACADEMIC PROGRESS, POOR ATTENDANCE, USE OF CONTROLLED SUBSTANCES ON CAMPUS, CONDUCT DETRIMENTAL TO THE COLLEGE, FAILURE TO COMPLY WITH FINANCIAL AID REGULATIONS OR NON-OBSERVANCE OF OTHER STUDENT REGULATIONS. IF YOU ARE DISMISSED, YOU MAY APPEAL TO THE APPEALS COMMITTEE. A FINAL DECISION WILL BE MADE ACCORDING TO SCHOOL POLICY. MORE INFORMATION IS AVAILABLE IN THE COLLEGE'S CATALOG.



PEDIATRIC CARDIAC ULTRASOUND AND CONGENITAL HEART DISEASE DIPLOMA PROGRAM

ON-TIME COMPLETION RATES

Calendar Year	# OF STUDENTS WHO BEGAN PROGRAM ¹	STUDENTS AVAILABLE FOR GRADUATION ²	# OF ON-TIME GRADUATES ³	ON-TIME COMPLETION RATE ⁴
2015	7	7	6	86%
2016	13	13	13	100%

STUDENTS COMPLETING WITHIN 150% OF THE PUBLISHED PROGRAM LENGTH

Calendar Year	# OF STUDENTS WHO BEGAN PROGRAM ¹	STUDENTS AVAILABLE FOR GRADUATION ²	150% GRADUATES ⁵	150% COMPLETION RATE ⁶
2013	0	0	0	18%
2014	0	0	0	0
2015	0	0	0	0
2016	0	0	0	0

STUDENT'S INITIALS: _____ DATE: _____
 INITIAL ONLY AFTER YOU HAVE HAD SUFFICIENT TIME TO
 READ AND UNDERSTAND THE INFORMATION

JOB PLACEMENT RATES

Calendar Year	# OF STUDENTS WHO BEGAN PROGRAM ¹	# OF GRADUATES ⁷	GRADUATES AVAILABLE FOR EMPLOYMENT ⁸	GRADUATES EMPLOYED IN THE FIELD ⁹	PLACEMENT RATE ¹⁰
2015	7	6	5	5	100%
2016	13	13	13	11	85%

YOU MAY OBTAIN FROM THE INSTITUTION A LIST OF THE EMPLOYMENT POSITIONS DETERMINED TO BE IN THE FIELD FOR WHICH A STUDENT IS RECEIVING EDUCATION AND TRAINING FROM THE OFFICE OF STUDENT SERVICES.

PART TIME VS. FULL TIME EMPLOYMENT

Calendar Year	GRADUATES EMPLOYED IN THE FIELD 20 TO 29 HOURS PER WEEK	GRADUATES EMPLOYED IN THE FIELD AT LEAST 30 HOURS PER WEEK	TOTAL GRADUATES EMPLOYED IN THE FIELD
2015	2	3	5
2016	2	9	11

SINGLE POSITION VS. CONCURRENT AGGREGATED POSITIONS

Calendar Year	GRADUATES EMPLOYED IN THE FIELD IN A SINGLE POSITION	GRADUATES EMPLOYED IN THE FIELD IN CONCURRENT AGGREGATED POSITIONS	TOTAL GRADUATES EMPLOYED IN THE FIELD
2015	5	0	5
2016	11	0	11

SELF-EMPLOYED/FREELANCE POSITIONS

Calendar Year	GRADUATES EMPLOYED WHO ARE SELF-EMPLOYED OR WORKING FREELANCE	TOTAL GRADUATES EMPLOYED IN THE FIELD
2015	0	0
2016	0	0

SCHOOL PERFORMANCE FACT SHEET DEFINITIONS:

ON-TIME COMPLETION RATES

Calendar Year	# OF STUDENTS WHO BEGAN PROGRAM ¹	STUDENTS AVAILABLE FOR GRADUATION ²	# OF ON-TIME GRADUATES ³	ON-TIME COMPLETION RATE ⁴
---------------	--	--	-------------------------------------	--------------------------------------

1“NUMBER OF STUDENTS WHO BEGAN PROGRAM” IS THE NUMBER OF STUDENTS WHO BEGAN WHO ARE SCHEDULED TO COMPLETE THE PROGRAM WITHIN THE REPORTING CALENDAR YEAR.

2 “STUDENTS AVAILABLE FOR GRADUATION” IS THE NUMBER OF STUDENTS WHO BEGAN THE PROGRAM MINUS THE NUMBER OF “STUDENTS UNAVAILABLE FOR GRADUATION”, WHICH MEANS STUDENTS WHO HAVE DIED, BEEN INCARCERATED, OR CALLED TO ACTIVE MILITARY DUTY.

3“GRADUATES” IS THE NUMBER OF STUDENTS WHO COMPLETED THE PROGRAM WITHIN 100% OF THE PUBLISHED LENGTH.

4“COMPLETION RATE” IS THE NUMBER OF GRADUATES DIVIDED BY THE NUMBER OF “STUDENTS AVAILABLE FOR GRADUATION”.

STUDENTS COMPLETING WITHIN 150% OF THE PUBLISHED PROGRAM LENGTH

Calendar Year	# OF STUDENTS WHO BEGAN PROGRAM ¹	STUDENTS AVAILABLE FOR GRADUATION ²	150% GRADUATES ⁵	150% COMPLETION RATE ⁶
---------------	--	--	-----------------------------	-----------------------------------

5“150% GRADUATES RATE” IS THE NUMBER OF STUDENTS WHO COMPLETED THE PROGRAM WITHIN 101%-150% OF THE PUBLISHED PROGRAM RATE.

6“150% COMPLETION RATE” IS THE PERCENTAGE OF STUDENTS WHO COMPLETED THE PROGRAM IN THE REPORTED CALENDAR YEAR WITHIN 101% -150% OF THE PUBLISHED LENGTH.

JOB PLACEMENT RATES

Calendar Year	# OF STUDENTS WHO BEGAN PROGRAM ¹	# OF GRADUATES ⁷	GRADUATES AVAILABLE FOR EMPLOYMENT ⁸	GRADUATES EMPLOYED IN THE FIELD ⁹	PLACEMENT RATE ¹⁰
---------------	--	-----------------------------	---	--	------------------------------

7“# OF GRADUATES” IS THE NUMBER OF STUDENTS WHO COMPLETED THE PROGRAM WITHIN 100% OF THE PUBLISHED LENGTH.

8“GRADUATES AVAILABLE FOR EMPLOYMENT” MEANS THE NUMBER OF GRADUATES MINUS THE NUMBER OF GRADUATES UNAVAILABLE FOR EMPLOYMENT. GRADUATES UNAVAILABLE FOR EMPLOYMENT MEANS GRADUATES WHO HAVE DIED, BECOME INCARCERATED, ARE CALLED TO ACTIVE MILITARY DUTY, OR ARE INTERNATIONAL STUDENTS WHO DO NOT HAVE A VISA ALLOWING EMPLOYMENT.

9“GRADUATES EMPLOYED IN THE FIELD” ARE GRADUATES WHO REPORT THAT THEY ARE EMPLOYED WITHIN SIX MONTHS OF GRADUATION IN A POSITION REQUIRING THE SKILLS THEY OBTAINED THROUGH THE EDUCATION PROVIDED BY THE SCHOOL.

10“PLACEMENT RATE” IS THE NUMBER OF EMPLOYED GRADUATES DIVIDED BY THE “GRADUATES AVAILABLE FOR EMPLOYMENT”.

INSTITUTIONAL EMPLOYMENT

Calendar Year	GRADUATES EMPLOYED IN THE FIELD WHO ARE EMPLOYED BY THE INSTITUTION, AN EMPLOYER OWNED BY THIS INSTITUTION, OR AN EMPLOYER WHO SHARES OWNERSHIP WITH THE INSTITUTION	TOTAL GRADUATES EMPLOYED IN THE FIELD
2015	0	0
2016	1	11

STUDENT'S INITIALS: _____ DATE: _____
 INITIAL ONLY AFTER YOU HAVE HAD SUFFICIENT TIME TO
 READ AND UNDERSTAND THE INFORMATION

SALARY AND WAGE INFORMATION

Year	GRADUATES AVAILABLE FOR EMPLOYMENT ⁸	GRADUATES EMPLOYED IN THE FIELD ⁹	BELOW \$30,000	\$30,000 TO 34,999	\$35,000 TO 39,999	\$40,000 TO 44,999	\$45,000 TO \$49,999	\$50,000 TO 54,999	ABOVE \$55,000	STUDENTS NOT REPORTING SALARY
2015	5	5	0	2	0	0	0	1	2	0
2016	13	11	2	0	0	2	1	0	6	0

STUDENT'S INITIALS: _____ DATE: _____
 INITIAL ONLY AFTER YOU HAVE HAD SUFFICIENT TIME TO
 READ AND UNDERSTAND THE INFORMATION

COST OF EDUCATIONAL PROGRAM

TOTAL CHARGES FOR THE PROGRAM FOR STUDENTS COMPLETING ON-TIME IN 2016. TOTAL CHARGES MAY BE HIGHER FOR STUDENTS THAT DO NOT COMPLETE ON-TIME.
\$19,745.00

STUDENT'S INITIALS: _____ DATE: _____
 INITIAL ONLY AFTER YOU HAVE HAD SUFFICIENT TIME TO
 READ AND UNDERSTAND THE INFORMATION

FEDERAL STUDENT LOAN DEBT AT WCUI

% OF STUDENTS WHO DEFAULTED ON FEDERAL LOANS AT THIS SCHOOL	% OF STUDENTS ENROLLED IN 2016 WHO TOOK OUT FEDERAL LOANS TO PAY FOR THIS PROGRAM	% OF GRADUATES IN 2016 WHO TOOK OUT FEDERAL STUDENT LOANS TO PAY FOR THIS PROGRAM	AVERAGE FEDERAL LOAN DEBT OF 2016 GRADUATES WHO TOOK OUT FEDERAL LOANS AT THIS INSTITUTION
5.4%	94%	80%	\$9,500.00

STUDENT'S INITIALS: _____ DATE: _____
 INITIAL ONLY AFTER YOU HAVE HAD SUFFICIENT TIME TO
 READ AND UNDERSTAND THE INFORMATION

THIS FACT SHEET IS FILED WITH THE BUREAU FOR PRIVATE POSTSECONDARY EDUCATION. REGARDLESS OF ANY INFORMATION YOU MAY HAVE RELATING TO COMPLETION RATES, PLACEMENT RATES, STARTING SALARIES, OR LICENSE EXAM PASSAGE RATES, THIS FACT SHEET CONTAINS THE INFORMATION AS CALCULATED PURSUANT TO STATE LAW.

ANY QUESTIONS A STUDENT MAY HAVE REGARDING THIS FACT SHEET THAT HAVE NOT BEEN SATISFACTORILY ANSWERED BY THIS INSTITUTION MAY BE DIRECTED TO THE BUREAU FOR PRIVATE POSTSECONDARY EDUCATION AT 2535 CAPITOL OAKS DRIVE, SUITE 400, SACRAMENTO, CA 95833, WWW.BPPE.CA.GOV, TOLL-FREE TELEPHONE NUMBER (888) 370-7589 OR BY FAX (916) 263-1897.

 STUDENT NAME-PRINT

 STUDENT SIGNATURE

 DATE

 SCHOOL OFFICIAL

 DATE

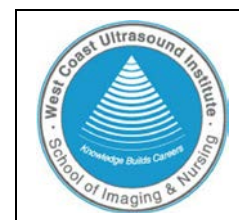
WEST COAST ULTRASOUND INSTITUTE
291 S. LA CIENEGA BLVD., SUITE 500
BEVERLY HILLS, CA 90211
(310) 289-5123W
WW.WCUI.EDU



WEST COAST ULTRASOUND INSTITUTE
3700 E. INLAND EMPIRE BLVD., SUITE 235
ONTARIO, CA 91764
(909) 483-3808
WW.WCUI.EDU

STUDENT'S RIGHT TO CANCEL:

A STUDENT HAS THE RIGHT TO CANCEL THE ENROLLMENT AGREEMENT AND OBTAIN A REFUND OF CHARGES PAID THROUGH ATTENDANCE AT THE FIRST CLASS SESSION, OR THE SEVENTH DAY AFTER ENROLLMENT, WHICHEVER IS LATER. IF A STUDENT HAS RECEIVED FEDERAL STUDENT FINANCIAL AID FUNDS, THE STUDENT IS ENTITLED TO A REFUND OF MONEYS NOT PAID FROM FEDERAL STUDENT FINANCIAL AID PROGRAM FUNDS. TO CANCEL THIS ENROLLMENT AGREEMENT AND/OR TERMINATE THE COURSE OF STUDY, THE STUDENT MUST MAIL OR DELIVER A SIGNED AND DATED COPY OF THE CANCELLATION NOTICE (AVAILABLE IN THE REGISTRAR'S OFFICE), OR MAIL OR DELIVER ANOTHER WRITTEN NOTICE, OR SEND A TELEGRAM. IF IT IS MAILED, IT IS DEEMED EFFECTIVE WHEN IT IS DEPOSITED IN THE MAIL PROPERLY WITH PREPAID POSTAGE PAID. THE ENROLLMENT AGREEMENT MAY BE TERMINATED BY THE COLLEGE FOR UNSATISFACTORY ACADEMIC PROGRESS, POOR ATTENDANCE, USE OF CONTROLLED SUBSTANCES ON CAMPUS, CONDUCT DETRIMENTAL TO THE COLLEGE, FAILURE TO COMPLY WITH FINANCIAL AID REGULATIONS OR NON-OBSERVANCE OF OTHER STUDENT REGULATIONS. IF YOU ARE DISMISSED, YOU MAY APPEAL TO THE APPEALS COMMITTEE. A FINAL DECISION WILL BE MADE ACCORDING TO SCHOOL POLICY. MORE INFORMATION IS AVAILABLE IN THE COLLEGE'S CATALOG.



PEDIATRIC CARDIAC ULTRASOUND AND CONGENITAL HEART DISEASE DIPLOMA PROGRAM

ON-TIME COMPLETION RATES

Calendar Year	# OF STUDENTS WHO BEGAN PROGRAM ¹	STUDENTS AVAILABLE FOR GRADUATION ²	# OF ON-TIME GRADUATES ³	ON-TIME COMPLETION RATE ⁴
2015	6	6	6	100%
2016	0	0	0	0

STUDENTS COMPLETING WITHIN 150% OF THE PUBLISHED PROGRAM LENGTH

Calendar Year	# OF STUDENTS WHO BEGAN PROGRAM ¹	STUDENTS AVAILABLE FOR GRADUATION ²	150% GRADUATES ⁵	150% COMPLETION RATE ⁶
2013	0	0	0	0
2014	0	0	0	0
2015	0	0	0	0
2016	0	0	0	0

STUDENT'S INITIALS: _____ DATE: _____
 INITIAL ONLY AFTER YOU HAVE HAD SUFFICIENT TIME TO
 READ AND UNDERSTAND THE INFORMATION

JOB PLACEMENT RATES

Calendar Year	# OF STUDENTS WHO BEGAN PROGRAM ¹	# OF GRADUATES ⁷	GRADUATES AVAILABLE FOR EMPLOYMENT ⁸	GRADUATES EMPLOYED IN THE FIELD ⁹	PLACEMENT RATE ¹⁰
2015	6	6	6	6	100%
2016	0	0	0	0	0

YOU MAY OBTAIN FROM THE INSTITUTION A LIST OF THE EMPLOYMENT POSITIONS DETERMINED TO BE IN THE FIELD FOR WHICH A STUDENT IS RECEIVING EDUCATION AND TRAINING FROM THE OFFICE OF STUDENT SERVICES.

PART TIME VS. FULL TIME EMPLOYMENT

Calendar Year	GRADUATES EMPLOYED IN THE FIELD 20 TO 29 HOURS PER WEEK	GRADUATES EMPLOYED IN THE FIELD AT LEAST 30 HOURS PER WEEK	TOTAL GRADUATES EMPLOYED IN THE FIELD
2015	3	3	6
2016	0	0	0

SINGLE POSITION VS. CONCURRENT AGGREGATED POSITIONS

Calendar Year	GRADUATES EMPLOYED IN THE FIELD IN A SINGLE POSITION	GRADUATES EMPLOYED IN THE FIELD IN CONCURRENT AGGREGATED POSITIONS	TOTAL GRADUATES EMPLOYED IN THE FIELD
2015	6	0	6
2016	0	0	0

SELF-EMPLOYED/FREELANCE POSITIONS

Calendar Year	GRADUATES EMPLOYED WHO ARE SELF-EMPLOYED OR WORKING FREELANCE	TOTAL GRADUATES EMPLOYED IN THE FIELD
2015	0	0
2016	0	0

SCHOOL PERFORMANCE FACT SHEET DEFINITIONS:

ON-TIME COMPLETION RATES

Calendar Year	# OF STUDENTS WHO BEGAN PROGRAM ¹	STUDENTS AVAILABLE FOR GRADUATION ²	# OF ON-TIME GRADUATES ³	ON-TIME COMPLETION RATE ⁴
---------------	--	--	-------------------------------------	--------------------------------------

1“NUMBER OF STUDENTS WHO BEGAN PROGRAM” IS THE NUMBER OF STUDENTS WHO BEGAN WHO ARE SCHEDULED TO COMPLETE THE PROGRAM WITHIN THE REPORTING CALENDAR YEAR.

2 “STUDENTS AVAILABLE FOR GRADUATION” IS THE NUMBER OF STUDENTS WHO BEGAN THE PROGRAM MINUS THE NUMBER OF “STUDENTS UNAVAILABLE FOR GRADUATION”, WHICH MEANS STUDENTS WHO HAVE DIED, BEEN INCARCERATED, OR CALLED TO ACTIVE MILITARY DUTY.

3“GRADUATES” IS THE NUMBER OF STUDENTS WHO COMPLETED THE PROGRAM WITHIN 100% OF THE PUBLISHED LENGTH.

4“COMPLETION RATE” IS THE NUMBER OF GRADUATES DIVIDED BY THE NUMBER OF “STUDENTS AVAILABLE FOR GRADUATION”.

STUDENTS COMPLETING WITHIN 150% OF THE PUBLISHED PROGRAM LENGTH

Calendar Year	# OF STUDENTS WHO BEGAN PROGRAM ¹	STUDENTS AVAILABLE FOR GRADUATION ²	150% GRADUATES ⁵	150% COMPLETION RATE ⁶
---------------	--	--	-----------------------------	-----------------------------------

5“150% GRADUATES RATE” IS THE NUMBER OF STUDENTS WHO COMPLETED THE PROGRAM WITHIN 101%-150% OF THE PUBLISHED PROGRAM RATE.

6“150% COMPLETION RATE” IS THE PERCENTAGE OF STUDENTS WHO COMPLETED THE PROGRAM IN THE REPORTED CALENDAR YEAR WITHIN 101% -150% OF THE PUBLISHED LENGTH.

JOB PLACEMENT RATES

Calendar Year	# OF STUDENTS WHO BEGAN PROGRAM ¹	# OF GRADUATES ⁷	GRADUATES AVAILABLE FOR EMPLOYMENT ⁸	GRADUATES EMPLOYED IN THE FIELD ⁹	PLACEMENT RATE ¹⁰
---------------	--	-----------------------------	---	--	------------------------------

7“# OF GRADUATES” IS THE NUMBER OF STUDENTS WHO COMPLETED THE PROGRAM WITHIN 100% OF THE PUBLISHED LENGTH.

8“GRADUATES AVAILABLE FOR EMPLOYMENT” MEANS THE NUMBER OF GRADUATES MINUS THE NUMBER OF GRADUATES UNAVAILABLE FOR EMPLOYMENT. GRADUATES UNAVAILABLE FOR EMPLOYMENT MEANS GRADUATES WHO HAVE DIED, BECOME INCARCERATED, ARE CALLED TO ACTIVE MILITARY DUTY, OR ARE INTERNATIONAL STUDENTS WHO DO NOT HAVE A VISA ALLOWING EMPLOYMENT.

9“GRADUATES EMPLOYED IN THE FIELD” ARE GRADUATES WHO REPORT THAT THEY ARE EMPLOYED WITHIN SIX MONTHS OF GRADUATION IN A POSITION REQUIRING THE SKILLS THEY OBTAINED THROUGH THE EDUCATION PROVIDED BY THE SCHOOL.

10“PLACEMENT RATE” IS THE NUMBER OF EMPLOYED GRADUATES DIVIDED BY THE “GRADUATES AVAILABLE FOR EMPLOYMENT”.

INSTITUTIONAL EMPLOYMENT

Calendar Year	GRADUATES EMPLOYED IN THE FIELD WHO ARE EMPLOYED BY THE INSTITUTION, AN EMPLOYER OWNED BY THIS INSTITUTION, OR AN EMPLOYER WHO SHARES OWNERSHIP WITH THE INSTITUTION	TOTAL GRADUATES EMPLOYED IN THE FIELD
2015	0	0
2016	0	0

STUDENT'S INITIALS: _____ DATE: _____
 INITIAL ONLY AFTER YOU HAVE HAD SUFFICIENT TIME TO
 READ AND UNDERSTAND THE INFORMATION

SALARY AND WAGE INFORMATION

Year	GRADUATES AVAILABLE FOR EMPLOYMENT ⁸	GRADUATES EMPLOYED IN THE FIELD ⁹	BELOW \$30,000	\$30,000 TO 34,999	\$35,000 TO 39,999	\$40,000 TO 44,999	\$45,000 TO 49,999	\$50,000 TO 54,999	ABOVE \$55,000	STUDENTS NOT REPORTING SALARY
2015	6	6	2	0	1	0	0	0	3	0
2016	0	0	0	0	0	0	0	0	0	0

STUDENT'S INITIALS: _____ DATE: _____
 INITIAL ONLY AFTER YOU HAVE HAD SUFFICIENT TIME TO
 READ AND UNDERSTAND THE INFORMATION

COST OF EDUCATIONAL PROGRAM

TOTAL CHARGES FOR THE PROGRAM FOR STUDENTS COMPLETING ON-TIME IN 2016. TOTAL CHARGES MAY BE HIGHER FOR STUDENTS THAT DO NOT COMPLETE ON-TIME.
\$19,815.00

STUDENT'S INITIALS: _____ DATE: _____
 INITIAL ONLY AFTER YOU HAVE HAD SUFFICIENT TIME TO
 READ AND UNDERSTAND THE INFORMATION

FEDERAL STUDENT LOAN DEBT AT WCUI

% OF STUDENTS WHO DEFAULTED ON FEDERAL LOANS AT THIS SCHOOL	% OF STUDENTS ENROLLED IN 2016 WHO TOOK OUT FEDERAL LOANS TO PAY FOR THIS PROGRAM	% OF GRADUATES IN 2016 WHO TOOK OUT FEDERAL STUDENT LOANS TO PAY FOR THIS PROGRAM	AVERAGE FEDERAL LOAN DEBT OF 2016 GRADUATES WHO TOOK OUT FEDERAL LOANS AT THIS INSTITUTION
5.4%	89%	50%	\$9,500.00

STUDENT'S INITIALS: _____ DATE: _____
 INITIAL ONLY AFTER YOU HAVE HAD SUFFICIENT TIME TO
 READ AND UNDERSTAND THE INFORMATION

THIS FACT SHEET IS FILED WITH THE BUREAU FOR PRIVATE POSTSECONDARY EDUCATION. REGARDLESS OF ANY INFORMATION YOU MAY HAVE RELATING TO COMPLETION RATES, PLACEMENT RATES, STARTING SALARIES, OR LICENSE EXAM PASSAGE RATES, THIS FACT SHEET CONTAINS THE INFORMATION AS CALCULATED PURSUANT TO STATE LAW.

ANY QUESTIONS A STUDENT MAY HAVE REGARDING THIS FACT SHEET THAT HAVE NOT BEEN SATISFACTORILY ANSWERED BY THIS INSTITUTION MAY BE DIRECTED TO THE BUREAU FOR PRIVATE POSTSECONDARY EDUCATION AT 2535 CAPITOL OAKS DRIVE, SUITE 400, SACRAMENTO, CA 95833, WWW.BPPE.CA.GOV, TOLL-FREE TELEPHONE NUMBER (888) 370-7589 OR BY FAX (916) 263-1897.

 STUDENT NAME-PRINT

 STUDENT SIGNATURE

 DATE

 SCHOOL OFFICIAL

 DATE

WEST COAST ULTRASOUND INSTITUTE
291 S. LA CIENEGA BLVD., SUITE 500
BEVERLY HILLS, CA 90211
(310) 289-5123W
WW.WCUI.EDU



WEST COAST ULTRASOUND INSTITUTE
3700 E. INLAND EMPIRE BLVD., SUITE 235
ONTARIO, CA 91764
(909) 483-3808
WW.WCUI.EDU

STUDENT'S RIGHT TO CANCEL:

A STUDENT HAS THE RIGHT TO CANCEL THE ENROLLMENT AGREEMENT AND OBTAIN A REFUND OF CHARGES PAID THROUGH ATTENDANCE AT THE FIRST CLASS SESSION, OR THE SEVENTH DAY AFTER ENROLLMENT, WHICHEVER IS LATER. IF A STUDENT HAS RECEIVED FEDERAL STUDENT FINANCIAL AID FUNDS, THE STUDENT IS ENTITLED TO A REFUND OF MONEYS NOT PAID FROM FEDERAL STUDENT FINANCIAL AID PROGRAM FUNDS. TO CANCEL THIS ENROLLMENT AGREEMENT AND/OR TERMINATE THE COURSE OF STUDY, THE STUDENT MUST MAIL OR DELIVER A SIGNED AND DATED COPY OF THE CANCELLATION NOTICE (AVAILABLE IN THE REGISTRAR'S OFFICE), OR MAIL OR DELIVER ANOTHER WRITTEN NOTICE, OR SEND A TELEGRAM. IF IT IS MAILED, IT IS DEEMED EFFECTIVE WHEN IT IS DEPOSITED IN THE MAIL PROPERLY WITH PREPAID POSTAGE PAID. THE ENROLLMENT AGREEMENT MAY BE TERMINATED BY THE COLLEGE FOR UNSATISFACTORY ACADEMIC PROGRESS, POOR ATTENDANCE, USE OF CONTROLLED SUBSTANCES ON CAMPUS, CONDUCT DETRIMENTAL TO THE COLLEGE, FAILURE TO COMPLY WITH FINANCIAL AID REGULATIONS OR NON-OBSERVANCE OF OTHER STUDENT REGULATIONS. IF YOU ARE DISMISSED, YOU MAY APPEAL TO THE APPEALS COMMITTEE. A FINAL DECISION WILL BE MADE ACCORDING TO SCHOOL POLICY. MORE INFORMATION IS AVAILABLE IN THE COLLEGE'S CATALOG.

WEST COAST ULTRASOUND INSTITUTE
 BEVERLY HILLS CAMPUS
 SCHOOL PERFORMANCE FACT SHEET
 2017-18 ACADEMIC YEAR



VOCATIONAL NURSING DIPLOMA PROGRAM

ON-TIME COMPLETION RATES

Calendar Year	# OF STUDENTS WHO BEGAN PROGRAM ¹	STUDENTS AVAILABLE FOR GRADUATION ²	# OF ON-TIME GRADUATES ³	ON-TIME COMPLETION RATE ⁴
2015	28	28	10	36%
2016	32	32	11	34%

STUDENTS COMPLETING WITHIN 150% OF THE PUBLISHED PROGRAM LENGTH

Calendar Year	# OF STUDENTS WHO BEGAN PROGRAM ¹	STUDENTS AVAILABLE FOR GRADUATION ²	150% GRADUATES ⁵	150% COMPLETION RATE ⁶
2013	41	41	16	39%
2014	26	26	1	4%
2015	0	0	0	0
2016	0	0	0	0

STUDENT'S INITIALS: _____ DATE: _____
 INITIAL ONLY AFTER YOU HAVE HAD SUFFICIENT TIME TO
 READ AND UNDERSTAND THE INFORMATION

JOB PLACEMENT RATES

Calendar Year	# OF STUDENTS WHO BEGAN PROGRAM ¹	# OF GRADUATES ⁷	GRADUATES AVAILABLE FOR EMPLOYMENT ⁸	GRADUATES EMPLOYED IN THE FIELD ⁹	PLACEMENT RATE ¹⁰
2015	28	10	7	4	57%
2016	32	11	10	7	70%

YOU MAY OBTAIN FROM THE INSTITUTION A LIST OF THE EMPLOYMENT POSITIONS DETERMINED TO BE IN THE FIELD FOR WHICH A STUDENT IS RECEIVING EDUCATION AND TRAINING FROM THE OFFICE OF STUDENT SERVICES.

PART TIME VS. FULL TIME EMPLOYMENT

Calendar Year	GRADUATES EMPLOYED IN THE FIELD 20 TO 29 HOURS PER WEEK	GRADUATES EMPLOYED IN THE FIELD AT LEAST 30 HOURS PER WEEK	TOTAL GRADUATES EMPLOYED IN THE FIELD
2015	0	4	4
2016	0	7	7

SINGLE POSITION VS. CONCURRENT AGGREGATED POSITIONS

Calendar Year	GRADUATES EMPLOYED IN THE FIELD IN A SINGLE POSITION	GRADUATES EMPLOYED IN THE FIELD IN CONCURRENT AGGREGATED POSITIONS	TOTAL GRADUATES EMPLOYED IN THE FIELD
2015	4	0	0
2016	7	0	0

SELF-EMPLOYED/FREELANCE POSITIONS

Calendar Year	GRADUATES EMPLOYED WHO ARE SELF-EMPLOYED OR WORKING FREELANCE	TOTAL GRADUATES EMPLOYED IN THE FIELD
2015	0	0
2016	0	0

SCHOOL PERFORMANCE FACT SHEET DEFINITIONS:

ON-TIME COMPLETION RATES

Calendar Year	# OF STUDENTS WHO BEGAN PROGRAM ¹	STUDENTS AVAILABLE FOR GRADUATION ²	# OF ON-TIME GRADUATES ³	ON-TIME COMPLETION RATE ⁴
---------------	--	--	-------------------------------------	--------------------------------------

1 “NUMBER OF STUDENTS WHO BEGAN PROGRAM” IS THE NUMBER OF STUDENTS WHO BEGAN WHO ARE SCHEDULED TO COMPLETE THE PROGRAM WITHIN THE REPORTING CALENDAR YEAR.

2 “STUDENTS AVAILABLE FOR GRADUATION” IS THE NUMBER OF STUDENTS WHO BEGAN THE PROGRAM MINUS THE NUMBER OF “STUDENTS UNAVAILABLE FOR GRADUATION”, WHICH MEANS STUDENTS WHO HAVE DIED, BEEN INCARCERATED, OR CALLED TO ACTIVE MILITARY DUTY.

3 “GRADUATES” IS THE NUMBER OF STUDENTS WHO COMPLETED THE PROGRAM WITHIN 100% OF THE PUBLISHED LENGTH.

4 “COMPLETION RATE” IS THE NUMBER OF GRADUATES DIVIDED BY THE NUMBER OF “STUDENTS AVAILABLE FOR GRADUATION”.

STUDENTS COMPLETING WITHIN 150% OF THE PUBLISHED PROGRAM LENGTH

Calendar Year	# OF STUDENTS WHO BEGAN PROGRAM ¹	STUDENTS AVAILABLE FOR GRADUATION ²	150% GRADUATES ⁵	150% COMPLETION RATE ⁶
---------------	--	--	-----------------------------	-----------------------------------

5 “150% GRADUATES RATE” IS THE NUMBER OF STUDENTS WHO COMPLETED THE PROGRAM WITHIN 101%-150% OF THE PUBLISHED PROGRAM RATE.

6 “150% COMPLETION RATE” IS THE PERCENTAGE OF STUDENTS WHO COMPLETED THE PROGRAM IN THE REPORTED CALENDAR YEAR WITHIN 101% -150% OF THE PUBLISHED LENGTH.

JOB PLACEMENT RATES

Calendar Year	# OF STUDENTS WHO BEGAN PROGRAM ¹	# OF GRADUATES ⁷	GRADUATES AVAILABLE FOR EMPLOYMENT ⁸	GRADUATES EMPLOYED IN THE FIELD ⁹	PLACEMENT RATE ¹⁰
---------------	--	-----------------------------	---	--	------------------------------

7 “# OF GRADUATES” IS THE NUMBER OF STUDENTS WHO COMPLETED THE PROGRAM WITHIN 100% OF THE PUBLISHED LENGTH.

8 “GRADUATES AVAILABLE FOR EMPLOYMENT” MEANS THE NUMBER OF GRADUATES MINUS THE NUMBER OF GRADUATES UNAVAILABLE FOR EMPLOYMENT. GRADUATES UNAVAILABLE FOR EMPLOYMENT MEANS GRADUATES WHO HAVE DIED, BECOME INCARCERATED, ARE CALLED TO ACTIVE MILITARY DUTY, OR ARE INTERNATIONAL STUDENTS WHO DO NOT HAVE A VISA ALLOWING EMPLOYMENT.

9 “GRADUATES EMPLOYED IN THE FIELD” ARE GRADUATES WHO REPORT THAT THEY ARE EMPLOYED WITHIN SIX MONTHS OF GRADUATION IN A POSITION REQUIRING THE SKILLS THEY OBTAINED THROUGH THE EDUCATION PROVIDED BY THE SCHOOL.

10 “PLACEMENT RATE” IS THE NUMBER OF EMPLOYED GRADUATES DIVIDED BY THE “GRADUATES AVAILABLE FOR EMPLOYMENT”.

INSTITUTIONAL EMPLOYMENT

CALENDAR YEAR	GRADUATES EMPLOYED IN THE FIELD WHO ARE EMPLOYED BY THE INSTITUTION, AN EMPLOYER OWNED BY THIS INSTITUTION, OR AN EMPLOYER WHO SHARES OWNERSHIP WITH THE INSTITUTION	TOTAL GRADUATES EMPLOYED IN THE FIELD
2015	0	0
2016	0	0

STUDENT'S INITIALS: _____ DATE: _____
 INITIAL ONLY AFTER YOU HAVE HAD SUFFICIENT TIME TO
 READ AND UNDERSTAND THE INFORMATION

LICENSE EXAMINATION PASSAGE RATES

CALENDAR YEAR	# OF GRADUATES IN CALENDAR YEAR	# OF GRADUATES TAKING EXAMINATION	# WHO PASSED FIRST AVAILABLE EXAM	# WHO FAILED FIRST AVAILABLE EXAM	PASSAGE RATE
2015	10	10	10	0	100%
2016	11	9	9	0	100%

STUDENT'S INITIALS: _____ DATE: _____
 INITIAL ONLY AFTER YOU HAVE HAD SUFFICIENT TIME TO
 READ AND UNDERSTAND THE INFORMATION

SALARY AND WAGE INFORMATION

Year	GRADUATES AVAILABLE FOR EMPLOYMENT ⁸	GRADUATES EMPLOYED IN THE FIELD ⁹	BELOW \$30,000	\$30,000 TO 34,999	\$35,000 TO 39,999	\$40,000 TO 44,999	\$45,000 TO 49,999	\$50,000 TO 54,999	ABOVE \$55,000	STUDENTS NOT REPORTING SALARY
2015	7	4	2	1	1	0	0	0	0	0
2016	10	7	2	1	4	0	0	0	0	0

STUDENT'S INITIALS: _____ DATE: _____
 INITIAL ONLY AFTER YOU HAVE HAD SUFFICIENT TIME TO
 READ AND UNDERSTAND THE INFORMATION

COST OF EDUCATIONAL PROGRAM

TOTAL CHARGES FOR THE PROGRAM FOR STUDENTS COMPLETING ON-TIME IN 2016. TOTAL CHARGES MAY BE HIGHER FOR STUDENTS THAT DO NOT COMPLETE ON-TIME.
\$28,165.00

STUDENT'S INITIALS: _____ DATE: _____
 INITIAL ONLY AFTER YOU HAVE HAD SUFFICIENT TIME TO
 READ AND UNDERSTAND THE INFORMATION

FEDERAL STUDENT LOAN DEBT AT WCUI

% OF STUDENTS WHO DEFAULTED ON FEDERAL LOANS AT THIS SCHOOL	% OF STUDENTS ENROLLED IN 2016 WHO TOOK OUT FEDERAL LOANS TO PAY FOR THIS PROGRAM	% OF GRADUATES IN 2016 WHO TOOK OUT FEDERAL STUDENT LOANS TO PAY FOR THIS PROGRAM	AVERAGE FEDERAL LOAN DEBT OF 2016 GRADUATES WHO TOOK OUT FEDERAL LOANS AT THIS INSTITUTION
6.7%	94%	100%	\$16,500.00

STUDENT'S INITIALS: _____ DATE: _____
 INITIAL ONLY AFTER YOU HAVE HAD SUFFICIENT TIME TO
 READ AND UNDERSTAND THE INFORMATION

THIS FACT SHEET IS FILED WITH THE BUREAU FOR PRIVATE POSTSECONDARY EDUCATION. REGARDLESS OF ANY INFORMATION YOU MAY HAVE RELATING TO COMPLETION RATES, PLACEMENT RATES, STARTING SALARIES, OR LICENSE EXAM PASSAGE RATES, THIS FACT SHEET CONTAINS THE INFORMATION AS CALCULATED PURSUANT TO STATE LAW.

ANY QUESTIONS A STUDENT MAY HAVE REGARDING THIS FACT SHEET THAT HAVE NOT BEEN SATISFACTORILY ANSWERED BY THIS INSTITUTION MAY BE DIRECTED TO THE BUREAU FOR PRIVATE POSTSECONDARY EDUCATION AT 2535 CAPITOL OAKS DRIVE, SUITE 400, SACRAMENTO, CA 95833, WWW.BPPE.CA.GOV, TOLL-FREE TELEPHONE NUMBER (888) 370-7589 OR BY FAX (916) 263-1897.

 STUDENT NAME-PRINT

 STUDENT SIGNATURE

 DATE

 SCHOOL OFFICIAL

 DATE

WEST COAST ULTRASOUND INSTITUTE
291 S. LA CIENEGA BLVD., SUITE 500
BEVERLY HILLS, CA 90211
(310) 289-5123W
WW.WCUI.EDU



WEST COAST ULTRASOUND INSTITUTE
3700 E. INLAND EMPIRE BLVD., SUITE 235
ONTARIO, CA 91764
(909) 483-3808
WW.WCUI.EDU

STUDENT'S RIGHT TO CANCEL:

A STUDENT HAS THE RIGHT TO CANCEL THE ENROLLMENT AGREEMENT AND OBTAIN A REFUND OF CHARGES PAID THROUGH ATTENDANCE AT THE FIRST CLASS SESSION, OR THE SEVENTH DAY AFTER ENROLLMENT, WHICHEVER IS LATER. IF A STUDENT HAS RECEIVED FEDERAL STUDENT FINANCIAL AID FUNDS, THE STUDENT IS ENTITLED TO A REFUND OF MONEYS NOT PAID FROM FEDERAL STUDENT FINANCIAL AID PROGRAM FUNDS. TO CANCEL THIS ENROLLMENT AGREEMENT AND/OR TERMINATE THE COURSE OF STUDY, THE STUDENT MUST MAIL OR DELIVER A SIGNED AND DATED COPY OF THE CANCELLATION NOTICE (AVAILABLE IN THE REGISTRAR'S OFFICE), OR MAIL OR DELIVER ANOTHER WRITTEN NOTICE, OR SEND A TELEGRAM. IF IT IS MAILED, IT IS DEEMED EFFECTIVE WHEN IT IS DEPOSITED IN THE MAIL PROPERLY WITH PREPAID POSTAGE PAID. THE ENROLLMENT AGREEMENT MAY BE TERMINATED BY THE COLLEGE FOR UNSATISFACTORY ACADEMIC PROGRESS, POOR ATTENDANCE, USE OF CONTROLLED SUBSTANCES ON CAMPUS, CONDUCT DETRIMENTAL TO THE COLLEGE, FAILURE TO COMPLY WITH FINANCIAL AID REGULATIONS OR NON-OBSERVANCE OF OTHER STUDENT REGULATIONS. IF YOU ARE DISMISSED, YOU MAY APPEAL TO THE APPEALS COMMITTEE. A FINAL DECISION WILL BE MADE ACCORDING TO SCHOOL POLICY. MORE INFORMATION IS AVAILABLE IN THE COLLEGE'S CATALOG.

WEST COAST ULTRASOUND INSTITUTE
 ONTARIO BRANCH CAMPUS
 SCHOOL PERFORMANCE FACT SHEET
 2017-18 ACADEMIC YEAR



VOCATIONAL NURSING DIPLOMA PROGRAM

ON-TIME COMPLETION RATES

Calendar Year	# OF STUDENTS WHO BEGAN PROGRAM ¹	STUDENTS AVAILABLE FOR GRADUATION ²	# OF ON-TIME GRADUATES ³	ON-TIME COMPLETION RATE ⁴
2015	70	70	24	34%
2016	76	76	31	41%

STUDENTS COMPLETING WITHIN 150% OF THE PUBLISHED PROGRAM LENGTH

Calendar Year	# OF STUDENTS WHO BEGAN PROGRAM ¹	STUDENTS AVAILABLE FOR GRADUATION ²	150% GRADUATES ⁵	150% COMPLETION RATE ⁶
2013	56	56	14	25%
2014	72	72	22	31%
2015	70	70	17	24%
2016	76	76	3	4%

STUDENT'S INITIALS: _____ DATE: _____
 INITIAL ONLY AFTER YOU HAVE HAD SUFFICIENT TIME TO
 READ AND UNDERSTAND THE INFORMATION

JOB PLACEMENT RATES

Calendar Year	# OF STUDENTS WHO BEGAN PROGRAM ¹	# OF GRADUATES ⁷	GRADUATES AVAILABLE FOR EMPLOYMENT ⁸	GRADUATES EMPLOYED IN THE FIELD ⁹	PLACEMENT RATE ¹⁰
2015	70	24	24	12	50%
2016	76	31	29	22	76%

YOU MAY OBTAIN FROM THE INSTITUTION A LIST OF THE EMPLOYMENT POSITIONS DETERMINED TO BE IN THE FIELD FOR WHICH A STUDENT IS RECEIVING EDUCATION AND TRAINING FROM THE OFFICE OF STUDENT SERVICES.

PART TIME VS. FULL TIME EMPLOYMENT

Calendar Year	GRADUATES EMPLOYED IN THE FIELD 20 TO 29 HOURS PER WEEK	GRADUATES EMPLOYED IN THE FIELD AT LEAST 30 HOURS PER WEEK	TOTAL GRADUATES EMPLOYED IN THE FIELD
2015	2	10	12
2016	4	18	22

SINGLE POSITION VS. CONCURRENT AGGREGATED POSITIONS

Calendar Year	GRADUATES EMPLOYED IN THE FIELD IN A SINGLE POSITION	GRADUATES EMPLOYED IN THE FIELD IN CONCURRENT AGGREGATED POSITIONS	TOTAL GRADUATES EMPLOYED IN THE FIELD
2015	12	0	0
2016	22	0	0

SELF-EMPLOYED/FREELANCE POSITIONS

Calendar Year	GRADUATES EMPLOYED WHO ARE SELF-EMPLOYED OR WORKING FREELANCE	TOTAL GRADUATES EMPLOYED IN THE FIELD
2015	0	0
2016	0	0

SCHOOL PERFORMANCE FACT SHEET DEFINITIONS:

ON-TIME COMPLETION RATES

Calendar Year	# OF STUDENTS WHO BEGAN PROGRAM ¹	STUDENTS AVAILABLE FOR GRADUATION ²	# OF ON-TIME GRADUATES ³	ON-TIME COMPLETION RATE ⁴
---------------	--	--	-------------------------------------	--------------------------------------

1 “NUMBER OF STUDENTS WHO BEGAN PROGRAM” IS THE NUMBER OF STUDENTS WHO BEGAN WHO ARE SCHEDULED TO COMPLETE THE PROGRAM WITHIN THE REPORTING CALENDAR YEAR.

2 “STUDENTS AVAILABLE FOR GRADUATION” IS THE NUMBER OF STUDENTS WHO BEGAN THE PROGRAM MINUS THE NUMBER OF “STUDENTS UNAVAILABLE FOR GRADUATION”, WHICH MEANS STUDENTS WHO HAVE DIED, BEEN INCARCERATED, OR CALLED TO ACTIVE MILITARY DUTY.

3 “GRADUATES” IS THE NUMBER OF STUDENTS WHO COMPLETED THE PROGRAM WITHIN 100% OF THE PUBLISHED LENGTH.

4 “COMPLETION RATE” IS THE NUMBER OF GRADUATES DIVIDED BY THE NUMBER OF “STUDENTS AVAILABLE FOR GRADUATION”.

STUDENTS COMPLETING WITHIN 150% OF THE PUBLISHED PROGRAM LENGTH

Calendar Year	# OF STUDENTS WHO BEGAN PROGRAM ¹	STUDENTS AVAILABLE FOR GRADUATION ²	150% GRADUATES ⁵	150% COMPLETION RATE ⁶
---------------	--	--	-----------------------------	-----------------------------------

5 “150% GRADUATES RATE” IS THE NUMBER OF STUDENTS WHO COMPLETED THE PROGRAM WITHIN 101%-150% OF THE PUBLISHED PROGRAM RATE.

6 “150% COMPLETION RATE” IS THE PERCENTAGE OF STUDENTS WHO COMPLETED THE PROGRAM IN THE REPORTED CALENDAR YEAR WITHIN 101% -150% OF THE PUBLISHED LENGTH.

JOB PLACEMENT RATES

Calendar Year	# OF STUDENTS WHO BEGAN PROGRAM ¹	# OF GRADUATES ⁷	GRADUATES AVAILABLE FOR EMPLOYMENT ⁸	GRADUATES EMPLOYED IN THE FIELD ⁹	PLACEMENT RATE ¹⁰
---------------	--	-----------------------------	---	--	------------------------------

7 “# OF GRADUATES” IS THE NUMBER OF STUDENTS WHO COMPLETED THE PROGRAM WITHIN 100% OF THE PUBLISHED LENGTH.

8 “GRADUATES AVAILABLE FOR EMPLOYMENT” MEANS THE NUMBER OF GRADUATES MINUS THE NUMBER OF GRADUATES UNAVAILABLE FOR EMPLOYMENT. GRADUATES UNAVAILABLE FOR EMPLOYMENT MEANS GRADUATES WHO HAVE DIED, BECOME INCARCERATED, ARE CALLED TO ACTIVE MILITARY DUTY, OR ARE INTERNATIONAL STUDENTS WHO DO NOT HAVE A VISA ALLOWING EMPLOYMENT.

9 “GRADUATES EMPLOYED IN THE FIELD” ARE GRADUATES WHO REPORT THAT THEY ARE EMPLOYED WITHIN SIX MONTHS OF GRADUATION IN A POSITION REQUIRING THE SKILLS THEY OBTAINED THROUGH THE EDUCATION PROVIDED BY THE SCHOOL.

10 “PLACEMENT RATE” IS THE NUMBER OF EMPLOYED GRADUATES DIVIDED BY THE “GRADUATES AVAILABLE FOR EMPLOYMENT”.

INSTITUTIONAL EMPLOYMENT

CALENDAR YEAR	GRADUATES EMPLOYED IN THE FIELD WHO ARE EMPLOYED BY THE INSTITUTION, AN EMPLOYER OWNED BY THIS INSTITUTION, OR AN EMPLOYER WHO SHARES OWNERSHIP WITH THE INSTITUTION	TOTAL GRADUATES EMPLOYED IN THE FIELD
2015	0	0
2016	0	0

STUDENT'S INITIALS: _____ DATE: _____
 INITIAL ONLY AFTER YOU HAVE HAD SUFFICIENT TIME TO
 READ AND UNDERSTAND THE INFORMATION

LICENSE EXAMINATION PASSAGE RATES

CALENDAR YEAR	# OF GRADUATES IN CALENDAR YEAR	# OF GRADUATES TAKING EXAMINATION	# WHO PASSED FIRST AVAILABLE EXAM	# WHO FAILED FIRST AVAILABLE EXAM	PASSAGE RATE
2015	70	29	26	3	90%
2016	76	33	29	4	88%

STUDENT'S INITIALS: _____ DATE: _____
 INITIAL ONLY AFTER YOU HAVE HAD SUFFICIENT TIME TO
 READ AND UNDERSTAND THE INFORMATION

SALARY AND WAGE INFORMATION

Year	GRADUATES AVAILABLE FOR EMPLOYMENT ⁸	GRADUATES EMPLOYED IN THE FIELD ⁹	BELOW \$30,000	\$30,000 TO 34,999	\$35,000 TO 39,999	\$40,000 TO 44,999	\$45,000 TO 49,999	\$50,000 TO 54,999	ABOVE \$55,000	STUDENTS NOT REPORTING SALARY
2015	24	12	2	1	2	5	1	1	0	0
2016	32	22	4	1	4	7	6	0	0	0

STUDENT'S INITIALS: _____ DATE: _____
 INITIAL ONLY AFTER YOU HAVE HAD SUFFICIENT TIME TO
 READ AND UNDERSTAND THE INFORMATION

COST OF EDUCATIONAL PROGRAM

TOTAL CHARGES FOR THE PROGRAM FOR STUDENTS COMPLETING ON-TIME IN 2015. TOTAL CHARGES MAY BE HIGHER FOR STUDENTS THAT DO NOT COMPLETE ON-TIME.
\$28,165.00

STUDENT'S INITIALS: _____ DATE: _____
 INITIAL ONLY AFTER YOU HAVE HAD SUFFICIENT TIME TO
 READ AND UNDERSTAND THE INFORMATION

FEDERAL STUDENT LOAN DEBT AT WCUI

% OF STUDENTS WHO DEFAULTED ON FEDERAL LOANS AT THIS SCHOOL	% OF STUDENTS ENROLLED IN 2015 WHO TOOK OUT FEDERAL LOANS TO PAY FOR THIS PROGRAM	% OF GRADUATES IN 2015 WHO TOOK OUT FEDERAL STUDENT LOANS TO PAY FOR THIS PROGRAM	AVERAGE FEDERAL LOAN DEBT OF 2015 GRADUATES WHO TOOK OUT FEDERAL LOANS AT THIS INSTITUTION
5.4%	89%	100%	\$16,500.00

STUDENT'S INITIALS: _____ DATE: _____
 INITIAL ONLY AFTER YOU HAVE HAD SUFFICIENT TIME TO
 READ AND UNDERSTAND THE INFORMATION

THIS FACT SHEET IS FILED WITH THE BUREAU FOR PRIVATE POSTSECONDARY EDUCATION. REGARDLESS OF ANY INFORMATION YOU MAY HAVE RELATING TO COMPLETION RATES, PLACEMENT RATES, STARTING SALARIES, OR LICENSE EXAM PASSAGE RATES, THIS FACT SHEET CONTAINS THE INFORMATION AS CALCULATED PURSUANT TO STATE LAW.

ANY QUESTIONS A STUDENT MAY HAVE REGARDING THIS FACT SHEET THAT HAVE NOT BEEN SATISFACTORILY ANSWERED BY THIS INSTITUTION MAY BE DIRECTED TO THE BUREAU FOR PRIVATE POSTSECONDARY EDUCATION AT 2535 CAPITOL OAKS DRIVE, SUITE 400, SACRAMENTO, CA 95833, WWW.BPPE.CA.GOV, TOLL-FREE TELEPHONE NUMBER (888) 370-7589 OR BY FAX (916) 263-1897.

 STUDENT NAME-PRINT

 STUDENT SIGNATURE

 DATE

 SCHOOL OFFICIAL

 DATE

WEST COAST ULTRASOUND INSTITUTE
291 S. LA CIENEGA BLVD., SUITE 500
BEVERLY HILLS, CA 90211
(310) 289-5123W
WW.WCUI.EDU



WEST COAST ULTRASOUND INSTITUTE
3700 E. INLAND EMPIRE BLVD., SUITE 235
ONTARIO, CA 91764
(909) 483-3808
WW.WCUI.EDU

STUDENT'S RIGHT TO CANCEL:

A STUDENT HAS THE RIGHT TO CANCEL THE ENROLLMENT AGREEMENT AND OBTAIN A REFUND OF CHARGES PAID THROUGH ATTENDANCE AT THE FIRST CLASS SESSION, OR THE SEVENTH DAY AFTER ENROLLMENT, WHICHEVER IS LATER. IF A STUDENT HAS RECEIVED FEDERAL STUDENT FINANCIAL AID FUNDS, THE STUDENT IS ENTITLED TO A REFUND OF MONEYS NOT PAID FROM FEDERAL STUDENT FINANCIAL AID PROGRAM FUNDS. TO CANCEL THIS ENROLLMENT AGREEMENT AND/OR TERMINATE THE COURSE OF STUDY, THE STUDENT MUST MAIL OR DELIVER A SIGNED AND DATED COPY OF THE CANCELLATION NOTICE (AVAILABLE IN THE REGISTRAR'S OFFICE), OR MAIL OR DELIVER ANOTHER WRITTEN NOTICE, OR SEND A TELEGRAM. IF IT IS MAILED, IT IS DEEMED EFFECTIVE WHEN IT IS DEPOSITED IN THE MAIL PROPERLY WITH PREPAID POSTAGE PAID. THE ENROLLMENT AGREEMENT MAY BE TERMINATED BY THE COLLEGE FOR UNSATISFACTORY ACADEMIC PROGRESS, POOR ATTENDANCE, USE OF CONTROLLED SUBSTANCES ON CAMPUS, CONDUCT DETRIMENTAL TO THE COLLEGE, FAILURE TO COMPLY WITH FINANCIAL AID REGULATIONS OR NON-OBSERVANCE OF OTHER STUDENT REGULATIONS. IF YOU ARE DISMISSED, YOU MAY APPEAL TO THE APPEALS COMMITTEE. A FINAL DECISION WILL BE MADE ACCORDING TO SCHOOL POLICY. MORE INFORMATION IS AVAILABLE IN THE COLLEGE'S CATALOG.