



SCHOOL PERFORMANCE FACT SHEETS

2014-15

DIAGNOSTIC MEDICAL SONOGRAPHY AOS DEGREE PROGRAM
CARDIOVASCULAR SONOGRAPHY AOS DEGREE PROGRAM
MAGNETIC RESONANCE IMAGING AOS DEGREE PROGRAM
MAGNETIC RESONANCE IMAGING-LONG DIPLOMA PROGRAM
MAGNETIC RESONANCE IMAGING-SHORT DIPLOMA PROGRAM
PEDIATRIC CARDIAC ULTRASOUND AND CONGENITAL HEART DISEASE DIPLOMA PROGRAM
MEDICAL ASSISTANT DIPLOMA PROGRAM
VOCATIONAL NURSE DIPLOMA PROGRAM

WEST COAST ULTRASOUND INSTITUTE
(CALIFORNIA CAMPUSES)

MAIN CAMPUS
291 SOUTH LA CIENEGA BOULEVARD, SUITE 500
BEVERLY HILLS, CA 90211

ONTARIO BRANCH CAMPUS
3700 EAST INLAND EMPIRE BOULEVARD, SUITE 235
ONTARIO, CA 91764

THIS PAGE IS INTENTIONALLY LEFT BLANK

WEST COAST ULTRASOUND INSTITUTE
 BEVERLY HILLS CAMPUS
 SCHOOL PERFORMANCE FACT SHEET
 2014-15 ACADEMIC YEAR



DIAGNOSTIC MEDICAL SONOGRAPHY (18 MONTH PROGRAM)
ASSOCIATE OF OCCUPATIONAL SCIENCE DEGREE PROGRAM

The following charts represent the completion, placement and salary information for our students from the two (2) most recent completed academic years. We are required by the Bureau for Private Postsecondary Education to disclose this information to you prior to accepting your enrollment into West Coast Ultrasound Institute. Please review the information carefully for your chosen program of study. Upon satisfactory examination of your program data, and prior to signing your enrollment agreement, you must initial your understanding and acceptance

| Calendar Year | # OF STUDENTS WHO BEGAN PROGRAM ¹ | STUDENTS AVAILABLE FOR GRADUATION ² | GRADUATES ³ | COMPLETION RATE ⁴ | 150% GRADUATES ⁵ | 150% COMPLETION RATE ⁶ | STUDENT'S INITIALS BELOW: |
|---------------|--|--|------------------------|------------------------------|-----------------------------|-----------------------------------|---------------------------|
| 2012 | 41 | 40 | 5 | 13% | 16 | 40% | |
| 2013 | 76 | 76 | 17 | 22% | 32 | 42% | |

| Calendar Year | # OF GRADUATES ⁷ | GRADUATES AVAILABLE FOR EMPLOYMENT ⁸ | GRADUATES EMPLOYED IN THE FIELD ⁹ | PLACEMENT RATE ¹⁰ | GRADUATES EMPLOYED LESS THAN 32 HOURS PER WEEK | GRADUATES EMPLOYED MORE THAN 32 HOURS PER WEEK | STUDENT'S INITIALS BELOW: |
|---------------|-----------------------------|---|--|------------------------------|--|--|---------------------------|
| 2012 | 5 | 5 | 5 | 100% | 2 | 3 | |
| 2013 | 17 | 17 | 13 | 76% | 3 | 10 | |

ANNUAL SALARY AND WAGE REPORTED FOR GRADUATES EMPLOYED IN THE FIELD

| Calendar Year | GRADUATES AVAILABLE FOR EMPLOYMENT ⁸ | GRADUATES EMPLOYED IN THE FIELD ⁹ | BELOW \$30,000 | \$30,000 TO 34,999 | \$35,000 TO 39,999 | \$40,000 TO 44,999 | \$45,000 TO 49,999 | \$50,000 TO 54,999 | ABOVE \$55,000 | STUDENTS NOT REPORTING SALARY | STUDENT'S INITIALS BELOW |
|---------------|---|--|----------------|--------------------|--------------------|--------------------|--------------------|--------------------|----------------|-------------------------------|--------------------------|
| 2012 | 5 | 5 | 0 | 0 | 0 | 2 | 0 | 1 | 2 | 0 | |
| 2013 | 17 | 13 | 2 | 1 | 1 | 3 | 1 | 0 | 5 | | |

| | |
|--|--|
| 3 YEAR COHORT DEFAULT RATE PUBLISHED BY USDE: | % OF ENROLLED STUDENTS RECEIVING FEDERAL STUDENT LOANS: |
| 8.9% | 82% |

This fact sheet is filed with the Bureau for Private Postsecondary Education. Regardless of any information you may have relating to completion rates, placement rates, starting rates, starting salaries, or license exam passage rates, this fact sheet contains the information as calculated pursuant to state Law.

Information regarding a list of employment positions that have been determined to be within the field of training for this program can be obtained along with a list of objective sources supporting salaries claims for this program, by visiting the Career Services Department.

Any questions a student may have regarding this fact sheet that have not been satisfactory answered by the institution may be directed to the Bureau for Private Postsecondary Education at 2535 Capital Oaks Drive, Suite 400, t Sacramento, Ca 95833, www.bppe.ca.gov, (916) 431-6959 telephone, (916) 263-1897 fax.

I certify that I have received the School Performance Fact Sheet, and information regarding completions rates, and salary or wage information included in the School Performance Fact Sheet

 Student Signature

 Date

 Print Name

SCHOOL PERFORMANCE FACT SHEET DEFINITIONS:

| Calendar Year | # OF STUDENTS WHO BEGAN PROGRAM 1 | STUDENTS AVAILABLE FOR GRADUATION 2 | GRADUATES 3 | COMPLETION RATE 4 | 150% GRADUATES RATE 5 | 150% COMPLETION RATE 6 | STUDENT'S INITIALS BELOW: |
|---------------|--|--|--------------------|--------------------------|------------------------------|-------------------------------|---------------------------|
|---------------|--|--|--------------------|--------------------------|------------------------------|-------------------------------|---------------------------|

1“NUMBER OF STUDENTS WHO BEGAN PROGRAM” IS THE NUMBER OF STUDENTS WHO BEGAN WHO ARE SCHEDULED TO COMPLETE THE PROGRAM WITHIN THE REPORTING CALENDAR YEAR.

2 “STUDENTS AVAILABLE FOR GRADUATION” IS THE NUMBER OF STUDENTS WHO BEGAN THE PROGRAM MINUS THE NUMBER OF “STUDENTS UNAVAILABLE FOR GRADUATION”, WHICH MEANS STUDENTS WHO HAVE DIED, BEEN INCARCERATED, OR CALLED TO ACTIVE MILITARY DUTY.

3“GRADUATES” IS THE NUMBER OF STUDENTS WHO COMPLETED THE PROGRAM WITHIN 100% OF THE PUBLISHED LENGTH.

4“COMPLETION RATE” IS THE NUMBER OF GRADUATES DIVIDED BY THE NUMBER OF “STUDENTS AVAILABLE FOR GRADUATION”.

5“150% GRADUATES RATE” IS THE NUMBER OF STUDENTS WHO COMPLETED THE PROGRAM WITHIN 101%-150% OF THE PUBLISHED PROGRAM RATE.

6“150% COMPLETION RATE” IS THE PERCENTAGE OF STUDENTS WHO COMPLETED THE PROGRAM IN THE REPORTED CALENDAR YEAR WITHIN 101% -150% OF THE PUBLISHED LENGTH.

| Calendar Year | # OF GRADUATES 7 | GRADUATES AVAILABLE FOR EMPLOYMENT 8 | GRADUATES EMPLOYED IN THE FIELD 9 | PLACEMENT RATE 10 | GRADUATES EMPLOYED LESS THAN 32 HOURS PER WEEK | GRADUATES EMPLOYED MORE THAN 32 HOURS PER WEEK | STUDENT'S INITIALS BELOW: |
|---------------|-------------------------|---|--|--------------------------|--|--|---------------------------|
|---------------|-------------------------|---|--|--------------------------|--|--|---------------------------|

7“# OF GRADUATES” IS THE NUMBER OF STUDENTS WHO COMPLETED THE PROGRAM WITHIN 100% OF THE PUBLISHED LENGTH.

8“GRADUATES AVAILABLE FOR EMPLOYMENT” MEANS THE NUMBER OF GRADUATES MINUS THE NUMBER OF GRADUATES UNAVAILABLE FOR EMPLOYMENT. GRADUATES UNAVAILABLE FOR EMPLOYMENT MEANS GRADUATES WHO HAVE DIED, BECOME INCARCERATED, ARE CALLED TO ACTIVE MILITARY DUTY, OR ARE INTERNATIONAL STUDENTS WHO DO NOT HAVE A VISA ALLOWING EMPLOYMENT.

9“GRADUATES EMPLOYED IN THE FIELD” ARE GRADUATES WHO REPORT THAT THEY ARE EMPLOYED WITHIN SIX MONTHS OF GRADUATION IN A POSITION REQUIRING THE SKILLS THEY OBTAINED THROUGH THE EDUCATION PROVIDED BY THE SCHOOL.

10“PLACEMENT RATE” IS THE NUMBER OF EMPLOYED GRADUATES DIVIDED BY THE “GRADUATES AVAILABLE FOR EMPLOYMENT”.

| Annual Salary and Wage Reported for Graduates Employed in the Field | BELOW \$30,000 | \$30,000 TO 34,999 | \$35,000 TO 39,999 | \$40,000 TO 44,999 | \$45,000 TO 49,999 | \$50,000 TO 54,999 | \$55,000 TO 59,999 | ABOVE \$60,000 |
|---|----------------|--------------------|--------------------|--------------------|--------------------|--------------------|--------------------|----------------|
|---|----------------|--------------------|--------------------|--------------------|--------------------|--------------------|--------------------|----------------|

“Annual Salaries of the Placement Rate Cohorts” ARE THE ANNUAL SALARIES IN INCREMENTS OF \$5000.00 REPORTED BY THE GRADUATES WHO ARE EMPLOYED WITHIN SIX MONTHS OF GRADUATION IN A POSITION REQUIRING THE SKILLS THEY OBTAINED THROUGH THE EDUCATION PROVIDED BY THE SCHOOL

WEST COAST ULTRASOUND INSTITUTE
 ONTARIO BRANCH CAMPUS
 SCHOOL PERFORMANCE FACT SHEET
 2014-15 ACADEMIC YEAR



DIAGNOSTIC MEDICAL SONOGRAPHY (18 MONTH PROGRAM)
ASSOCIATE OF OCCUPATIONAL SCIENCE DEGREE PROGRAM

The following charts represent the completion, placement and salary information for our students from the two (2) most recent completed academic years. We are required by the Bureau for Private Postsecondary Education to disclose this information to you prior to accepting your enrollment into West Coast Ultrasound Institute. Please review the information carefully for your chosen program of study. Upon satisfactory examination of your program data, and prior to signing your enrollment agreement, you must initial your understanding and acceptance

| Calendar Year | # OF STUDENTS WHO BEGAN PROGRAM ¹ | STUDENTS AVAILABLE FOR GRADUATION ² | GRADUATES ³ | COMPLETION RATE ⁴ | 150% GRADUATES ⁵ | 150% COMPLETION RATE ⁶ | STUDENT'S INITIALS BELOW: |
|---------------|--|--|------------------------|------------------------------|-----------------------------|-----------------------------------|---------------------------|
| 2012 | 55 | 55 | 12 | 22% | 29 | 53% | |
| 2013 | 174 | 174 | 17 | 10% | 104 | 60% | |

| Calendar Year | # OF GRADUATES ⁷ | GRADUATES AVAILABLE FOR EMPLOYMENT ⁸ | GRADUATES EMPLOYED IN THE FIELD ⁹ | PLACEMENT RATE ¹⁰ | GRADUATES EMPLOYED LESS THAN 32 HOURS PER WEEK | GRADUATES EMPLOYED MORE THAN 32 HOURS PER WEEK | STUDENT'S INITIALS BELOW: |
|---------------|-----------------------------|---|--|------------------------------|--|--|---------------------------|
| 2012 | 12 | 12 | 12 | 100% | 7 | 5 | |
| 2013 | 17 | 17 | 13 | 76% | 5 | 8 | |

ANNUAL SALARY AND WAGE REPORTED FOR GRADUATES EMPLOYED IN THE FIELD

| Year | GRADUATES AVAILABLE FOR EMPLOYMENT ⁸ | GRADUATES EMPLOYED IN THE FIELD ⁹ | BELOW \$30,000 | \$30,000 TO 34,999 | \$35,000 TO 39,999 | \$40,000 TO 44,999 | \$45,000 TO 49,999 | \$50,000 TO 54,999 | ABOVE \$55,000 | STUDENTS NOT REPORTING SALARY | STUDENT'S INITIALS BELOW |
|------|---|--|----------------|--------------------|--------------------|--------------------|--------------------|--------------------|----------------|-------------------------------|--------------------------|
| 2012 | 12 | 12 | 6 | 0 | 0 | 2 | 0 | 2 | 2 | 0 | |
| 2013 | 17 | 13 | 3 | 1 | 2 | 2 | 0 | 5 | 0 | 0 | |

| | |
|--|--|
| 3 YEAR COHORT DEFAULT RATE PUBLISHED BY USDE: | % OF ENROLLED STUDENTS RECEIVING FEDERAL STUDENT LOANS: |
| 8.9% | 82% |

This fact sheet is filed with the Bureau for Private Postsecondary Education. Regardless of any information you may have relating to completion rates, placement rates, starting rates, starting salaries, or license exam passage rates, this fact sheet contains the information as calculated pursuant to state Law.

Information regarding a list of employment positions that have been determined to be within the field of training for this program can be obtained along with a list of objective sources supporting salaries claims for this program, by visiting the Career Services Department.

Any questions a student may have regarding this fact sheet that have not been satisfactory answered by the institution may be directed to the Bureau for Private Postsecondary Education at 2535 Capital Oaks Drive, Suite 400, t Sacramento, Ca 95833, www.bppe.ca.gov, (916) 431-6959 telephone, (916) 263-1897 fax.

I certify that I have received the School Performance Fact Sheet, and information regarding completions rates, and salary or wage information included in the School Performance Fact Sheet

 Student Signature

 Date

 Print Name

SCHOOL PERFORMANCE FACT SHEET DEFINITIONS:

| Calendar Year | # OF STUDENTS WHO BEGAN PROGRAM 1 | STUDENTS AVAILABLE FOR GRADUATION 2 | GRADUATES 3 | COMPLETION RATE 4 | 150% GRADUATES RATE 5 | 150% COMPLETION RATE 6 | STUDENT'S INITIALS BELOW: |
|---------------|--|--|--------------------|--------------------------|------------------------------|-------------------------------|---------------------------|
|---------------|--|--|--------------------|--------------------------|------------------------------|-------------------------------|---------------------------|

1“NUMBER OF STUDENTS WHO BEGAN PROGRAM” IS THE NUMBER OF STUDENTS WHO BEGAN WHO ARE SCHEDULED TO COMPLETE THE PROGRAM WITHIN THE REPORTING CALENDAR YEAR.

2 “STUDENTS AVAILABLE FOR GRADUATION” IS THE NUMBER OF STUDENTS WHO BEGAN THE PROGRAM MINUS THE NUMBER OF “STUDENTS UNAVAILABLE FOR GRADUATION”, WHICH MEANS STUDENTS WHO HAVE DIED, BEEN INCARCERATED, OR CALLED TO ACTIVE MILITARY DUTY.

3“GRADUATES” IS THE NUMBER OF STUDENTS WHO COMPLETED THE PROGRAM WITHIN 100% OF THE PUBLISHED LENGTH.

4“COMPLETION RATE” IS THE NUMBER OF GRADUATES DIVIDED BY THE NUMBER OF “STUDENTS AVAILABLE FOR GRADUATION”.

5“150% GRADUATES RATE” IS THE NUMBER OF STUDENTS WHO COMPLETED THE PROGRAM WITHIN 101%-150% OF THE PUBLISHED PROGRAM RATE.

6“150% COMPLETION RATE” IS THE PERCENTAGE OF STUDENTS WHO COMPLETED THE PROGRAM IN THE REPORTED CALENDAR YEAR WITHIN 101% -150% OF THE PUBLISHED LENGTH.

| Calendar Year | # OF GRADUATES 7 | GRADUATES AVAILABLE FOR EMPLOYMENT 8 | GRADUATES EMPLOYED IN THE FIELD 9 | PLACEMENT RATE 10 | GRADUATES EMPLOYED LESS THAN 32 HOURS PER WEEK | GRADUATES EMPLOYED MORE THAN 32 HOURS PER WEEK | STUDENT'S INITIALS BELOW: |
|---------------|-------------------------|---|--|--------------------------|--|--|---------------------------|
|---------------|-------------------------|---|--|--------------------------|--|--|---------------------------|

7“# OF GRADUATES” IS THE NUMBER OF STUDENTS WHO COMPLETED THE PROGRAM WITHIN 100% OF THE PUBLISHED LENGTH.

8“GRADUATES AVAILABLE FOR EMPLOYMENT” MEANS THE NUMBER OF GRADUATES MINUS THE NUMBER OF GRADUATES UNAVAILABLE FOR EMPLOYMENT. GRADUATES UNAVAILABLE FOR EMPLOYMENT MEANS GRADUATES WHO HAVE DIED, BECOME INCARCERATED, ARE CALLED TO ACTIVE MILITARY DUTY, OR ARE INTERNATIONAL STUDENTS WHO DO NOT HAVE A VISA ALLOWING EMPLOYMENT.

9“GRADUATES EMPLOYED IN THE FIELD” ARE GRADUATES WHO REPORT THAT THEY ARE EMPLOYED WITHIN SIX MONTHS OF GRADUATION IN A POSITION REQUIRING THE SKILLS THEY OBTAINED THROUGH THE EDUCATION PROVIDED BY THE SCHOOL.

10“PLACEMENT RATE” IS THE NUMBER OF EMPLOYED GRADUATES DIVIDED BY THE “GRADUATES AVAILABLE FOR EMPLOYMENT”.

| Annual Salary and Wage Reported for Graduates Employed in the Field | BELOW \$30,000 | \$30,000 TO 34,999 | \$35,000 TO 39,999 | \$40,000 TO 44,999 | \$45,000 TO 49,999 | \$50,000 TO 54,999 | \$55,000 TO 59,999 | ABOVE \$60,000 |
|---|----------------|--------------------|--------------------|--------------------|--------------------|--------------------|--------------------|----------------|
|---|----------------|--------------------|--------------------|--------------------|--------------------|--------------------|--------------------|----------------|

“Annual Salaries of the Placement Rate Cohorts” ARE THE ANNUAL SALARIES IN INCREMENTS OF \$5000.00 REPORTED BY THE GRADUATES WHO ARE EMPLOYED WITHIN SIX MONTHS OF GRADUATION IN A POSITION REQUIRING THE SKILLS THEY OBTAINED THROUGH THE EDUCATION PROVIDED BY THE SCHOOL

WEST COAST ULTRASOUND INSTITUTE
 BEVERLY HILLS CAMPUS
 SCHOOL PERFORMANCE FACT SHEET
 2014-15 ACADEMIC YEAR



CARDIOVASCULAR SONOGRAPHY (18 MONTH PROGRAM)
ASSOCIATE OF OCCUPATIONAL SCIENCE DEGREE PROGRAM

The following charts represent the completion, placement and salary information for our students from the two (2) most recent completed academic years. We are required by the Bureau for Private Postsecondary Education to disclose this information to you prior to accepting your enrollment into West Coast Ultrasound Institute. Please review the information carefully for your chosen program of study. Upon satisfactory examination of your program data, and prior to signing your enrollment agreement, you must initial your understanding and acceptance

| Calendar Year | # OF STUDENTS WHO BEGAN PROGRAM ¹ | STUDENTS AVAILABLE FOR GRADUATION ² | GRADUATES ³ | COMPLETION RATE ⁴ | 150% GRADUATES ⁵ | 150% COMPLETION RATE ⁶ | STUDENT'S INITIALS BELOW: |
|---------------|--|--|------------------------|------------------------------|-----------------------------|-----------------------------------|---------------------------|
| 2012 | 46 | 43 | 8 | 19% | 15 | 35% | |
| 2013 | 60 | 60 | 19 | 32% | 6 | 10% | |

| Calendar Year | # OF GRADUATES ⁷ | GRADUATES AVAILABLE FOR EMPLOYMENT ⁸ | GRADUATES EMPLOYED IN THE FIELD ⁹ | PLACEMENT RATE ¹⁰ | GRADUATES EMPLOYED LESS THAN 32 HOURS PER WEEK | GRADUATES EMPLOYED MORE THAN 32 HOURS PER WEEK | STUDENT'S INITIALS BELOW: |
|---------------|-----------------------------|---|--|------------------------------|--|--|---------------------------|
| 2012 | 8 | 8 | 8 | 100% | 6 | 2 | |
| 2013 | 19 | 16 | 14 | 88% | 6 | 8 | |

ANNUAL SALARY AND WAGE REPORTED FOR GRADUATES EMPLOYED IN THE FIELD

| Year | GRADUATES AVAILABLE FOR EMPLOYMENT ⁸ | GRADUATES EMPLOYED IN THE FIELD ⁹ | BELOW \$30,000 | \$30,000 TO 34,999 | \$35,000 TO 39,999 | \$40,000 TO 44,999 | \$45,000 TO 49,999 | \$50,000 TO 54,999 | ABOVE \$55,000 | STUDENTS NOT REPORTING SALARY | STUDENT'S INITIALS BELOW |
|------|---|--|----------------|--------------------|--------------------|--------------------|--------------------|--------------------|----------------|-------------------------------|--------------------------|
| 2012 | 8 | 8 | 4 | 0 | 2 | 1 | 0 | 1 | 0 | 0 | |
| 2013 | 16 | 14 | 5 | 3 | 1 | 0 | 0 | 2 | 3 | 0 | |

| | |
|--|--|
| 3 YEAR COHORT DEFAULT RATE PUBLISHED BY USDE: | % OF ENROLLED STUDENTS RECEIVING FEDERAL STUDENT LOANS: |
| 8.9% | 82% |

This fact sheet is filed with the Bureau for Private Postsecondary Education. Regardless of any information you may have relating to completion rates, placement rates, starting rates, starting salaries, or license exam passage rates, this fact sheet contains the information as calculated pursuant to state Law.

Information regarding a list of employment positions that have been determined to be within the field of training for this program can be obtained along with a list of objective sources supporting salaries claims for this program, by visiting the Career Services Department.

Any questions a student may have regarding this fact sheet that have not been satisfactory answered by the institution may be directed to the Bureau for Private Postsecondary Education at 2535 Capital Oaks Drive, Suite 400, t Sacramento, Ca 95833, www.bppe.ca.gov, (916) 431-6959 telephone, (916) 263-1897 fax.

I certify that I have received the School Performance Fact Sheet, and information regarding completions rates, and salary or wage information included in the School Performance Fact Sheet

 Student Signature

 Date

 Print Name

SCHOOL PERFORMANCE FACT SHEET DEFINITIONS:

| Calendar Year | # OF STUDENTS WHO BEGAN PROGRAM 1 | STUDENTS AVAILABLE FOR GRADUATION 2 | GRADUATES 3 | COMPLETION RATE 4 | 150% GRADUATES RATE 5 | 150% COMPLETION RATE 6 | STUDENT'S INITIALS BELOW: |
|---------------|--|--|--------------------|--------------------------|------------------------------|-------------------------------|---------------------------|
|---------------|--|--|--------------------|--------------------------|------------------------------|-------------------------------|---------------------------|

1“NUMBER OF STUDENTS WHO BEGAN PROGRAM” IS THE NUMBER OF STUDENTS WHO BEGAN WHO ARE SCHEDULED TO COMPLETE THE PROGRAM WITHIN THE REPORTING CALENDAR YEAR.

2 “STUDENTS AVAILABLE FOR GRADUATION” IS THE NUMBER OF STUDENTS WHO BEGAN THE PROGRAM MINUS THE NUMBER OF “STUDENTS UNAVAILABLE FOR GRADUATION”, WHICH MEANS STUDENTS WHO HAVE DIED, BEEN INCARCERATED, OR CALLED TO ACTIVE MILITARY DUTY.

3“GRADUATES” IS THE NUMBER OF STUDENTS WHO COMPLETED THE PROGRAM WITHIN 100% OF THE PUBLISHED LENGTH.

4“COMPLETION RATE” IS THE NUMBER OF GRADUATES DIVIDED BY THE NUMBER OF “STUDENTS AVAILABLE FOR GRADUATION”.

5“150% GRADUATES RATE” IS THE NUMBER OF STUDENTS WHO COMPLETED THE PROGRAM WITHIN 101%-150% OF THE PUBLISHED PROGRAM RATE.

6“150% COMPLETION RATE” IS THE PERCENTAGE OF STUDENTS WHO COMPLETED THE PROGRAM IN THE REPORTED CALENDAR YEAR WITHIN 101% -150% OF THE PUBLISHED LENGTH.

| Calendar Year | # OF GRADUATES 7 | GRADUATES AVAILABLE FOR EMPLOYMENT 8 | GRADUATES EMPLOYED IN THE FIELD 9 | PLACEMENT RATE 10 | GRADUATES EMPLOYED LESS THAN 32 HOURS PER WEEK | GRADUATES EMPLOYED MORE THAN 32 HOURS PER WEEK | STUDENT'S INITIALS BELOW: |
|---------------|-------------------------|---|--|--------------------------|--|--|---------------------------|
|---------------|-------------------------|---|--|--------------------------|--|--|---------------------------|

7“# OF GRADUATES” IS THE NUMBER OF STUDENTS WHO COMPLETED THE PROGRAM WITHIN 100% OF THE PUBLISHED LENGTH.

8“GRADUATES AVAILABLE FOR EMPLOYMENT” MEANS THE NUMBER OF GRADUATES MINUS THE NUMBER OF GRADUATES UNAVAILABLE FOR EMPLOYMENT. GRADUATES UNAVAILABLE FOR EMPLOYMENT MEANS GRADUATES WHO HAVE DIED, BECOME INCARCERATED, ARE CALLED TO ACTIVE MILITARY DUTY, OR ARE INTERNATIONAL STUDENTS WHO DO NOT HAVE A VISA ALLOWING EMPLOYMENT.

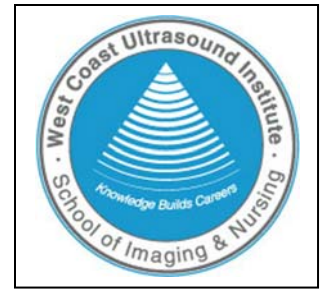
9“GRADUATES EMPLOYED IN THE FIELD” ARE GRADUATES WHO REPORT THAT THEY ARE EMPLOYED WITHIN SIX MONTHS OF GRADUATION IN A POSITION REQUIRING THE SKILLS THEY OBTAINED THROUGH THE EDUCATION PROVIDED BY THE SCHOOL.

10“PLACEMENT RATE” IS THE NUMBER OF EMPLOYED GRADUATES DIVIDED BY THE “GRADUATES AVAILABLE FOR EMPLOYMENT”.

| Annual Salary and Wage Reported for Graduates Employed in the Field | BELOW \$30,000 | \$30,000 TO 34,999 | \$35,000 TO 39,999 | \$40,000 TO 44,999 | \$45,000 TO 49,999 | \$50,000 TO 54,999 | \$55,000 TO 59,999 | ABOVE \$60,000 |
|---|----------------|--------------------|--------------------|--------------------|--------------------|--------------------|--------------------|----------------|
|---|----------------|--------------------|--------------------|--------------------|--------------------|--------------------|--------------------|----------------|

“Annual Salaries of the Placement Rate Cohorts” ARE THE ANNUAL SALARIES IN INCREMENTS OF \$5000.00 REPORTED BY THE GRADUATES WHO ARE EMPLOYED WITHIN SIX MONTHS OF GRADUATION IN A POSITION REQUIRING THE SKILLS THEY OBTAINED THROUGH THE EDUCATION PROVIDED BY THE SCHOOL

WEST COAST ULTRASOUND INSTITUTE
 ONTARIO BRANCH CAMPUS
 SCHOOL PERFORMANCE FACT SHEET
 2014-15 ACADEMIC YEAR



CARDIOVASCULAR SONOGRAPHY (18 MONTH PROGRAM)
ASSOCIATE OF OCCUPATIONAL SCIENCE DEGREE PROGRAM

The following charts represent the completion, placement and salary information for our students from the two (2) most recent completed academic years. We are required by the Bureau for Private Postsecondary Education to disclose this information to you prior to accepting your enrollment into West Coast Ultrasound Institute. Please review the information carefully for your chosen program of study. Upon satisfactory examination of your program data, and prior to signing your enrollment agreement, you must initial your understanding and acceptance

| Calendar Year | # OF STUDENTS WHO BEGAN PROGRAM ¹ | STUDENTS AVAILABLE FOR GRADUATION ² | GRADUATES ³ | COMPLETION RATE ⁴ | 150% GRADUATES ⁵ | 150% COMPLETION RATE ⁶ | STUDENT'S INITIALS BELOW: |
|---------------|--|--|------------------------|------------------------------|-----------------------------|-----------------------------------|---------------------------|
| 2012 | 55 | 55 | 9 | 16% | 24 | 44% | |
| 2013 | 87 | 87 | 15 | 17% | 48 | 55% | |

| Calendar Year | # OF GRADUATES ⁷ | GRADUATES AVAILABLE FOR EMPLOYMENT ⁸ | GRADUATES EMPLOYED IN THE FIELD ⁹ | PLACEMENT RATE ¹⁰ | GRADUATES EMPLOYED LESS THAN 32 HOURS PER WEEK | GRADUATES EMPLOYED MORE THAN 32 HOURS PER WEEK | STUDENT'S INITIALS BELOW: |
|---------------|-----------------------------|---|--|------------------------------|--|--|---------------------------|
| 2012 | 9 | 9 | 9 | 100% | 1 | 8 | |
| 2013 | 15 | 15 | 11 | 73% | 8 | 3 | |

ANNUAL SALARY AND WAGE REPORTED FOR GRADUATES EMPLOYED IN THE FIELD

| Year | GRADUATES AVAILABLE FOR EMPLOYMENT ⁸ | GRADUATES EMPLOYED IN THE FIELD ⁹ | BELOW \$30,000 | \$30,000 TO 34,999 | \$35,000 TO 39,999 | \$40,000 TO 44,999 | \$45,000 TO 49,999 | \$50,000 TO 54,999 | ABOVE \$55,000 | STUDENTS NOT REPORTING SALARY | STUDENT'S INITIALS BELOW |
|------|---|--|----------------|--------------------|--------------------|--------------------|--------------------|--------------------|----------------|-------------------------------|--------------------------|
| 2012 | 9 | 9 | 1 | 0 | 2 | 0 | 0 | 2 | 4 | 0 | |
| 2013 | 15 | 11 | 4 | 2 | 1 | 1 | 1 | 2 | 0 | 0 | |

| | |
|--|--|
| 3 YEAR COHORT DEFAULT RATE PUBLISHED BY USDE: | % OF ENROLLED STUDENTS RECEIVING FEDERAL STUDENT LOANS: |
| 8.9% | 82% |

This fact sheet is filed with the Bureau for Private Postsecondary Education. Regardless of any information you may have relating to completion rates, placement rates, starting rates, starting salaries, or license exam passage rates, this fact sheet contains the information as calculated pursuant to state Law.

Information regarding a list of employment positions that have been determined to be within the field of training for this program can be obtained along with a list of objective sources supporting salaries claims for this program, by visiting the Career Services Department.

Any questions a student may have regarding this fact sheet that have not been satisfactory answered by the institution may be directed to the Bureau for Private Postsecondary Education at 2535 Capital Oaks Drive, Suite 400, t Sacramento, Ca 95833, www.bppe.ca.gov, (916) 431-6959 telephone, (916) 263-1897 fax.

I certify that I have received the School Performance Fact Sheet, and information regarding completions rates, and salary or wage information included in the School Performance Fact Sheet

 Student Signature

 Date

 Print Name

SCHOOL PERFORMANCE FACT SHEET DEFINITIONS:

| Calendar Year | # OF STUDENTS WHO BEGAN PROGRAM 1 | STUDENTS AVAILABLE FOR GRADUATION 2 | GRADUATES 3 | COMPLETION RATE 4 | 150% GRADUATES RATE 5 | 150% COMPLETION RATE 6 | STUDENT'S INITIALS BELOW: |
|---------------|--|--|--------------------|--------------------------|------------------------------|-------------------------------|---------------------------|
|---------------|--|--|--------------------|--------------------------|------------------------------|-------------------------------|---------------------------|

1“NUMBER OF STUDENTS WHO BEGAN PROGRAM” IS THE NUMBER OF STUDENTS WHO BEGAN WHO ARE SCHEDULED TO COMPLETE THE PROGRAM WITHIN THE REPORTING CALENDAR YEAR.

2 “STUDENTS AVAILABLE FOR GRADUATION” IS THE NUMBER OF STUDENTS WHO BEGAN THE PROGRAM MINUS THE NUMBER OF “STUDENTS UNAVAILABLE FOR GRADUATION”, WHICH MEANS STUDENTS WHO HAVE DIED, BEEN INCARCERATED, OR CALLED TO ACTIVE MILITARY DUTY.

3“GRADUATES” IS THE NUMBER OF STUDENTS WHO COMPLETED THE PROGRAM WITHIN 100% OF THE PUBLISHED LENGTH.

4“COMPLETION RATE” IS THE NUMBER OF GRADUATES DIVIDED BY THE NUMBER OF “STUDENTS AVAILABLE FOR GRADUATION”.

5“150% GRADUATES RATE” IS THE NUMBER OF STUDENTS WHO COMPLETED THE PROGRAM WITHIN 101%-150% OF THE PUBLISHED PROGRAM RATE.

6“150% COMPLETION RATE” IS THE PERCENTAGE OF STUDENTS WHO COMPLETED THE PROGRAM IN THE REPORTED CALENDAR YEAR WITHIN 101% -150% OF THE PUBLISHED LENGTH.

| Calendar Year | # OF GRADUATES 7 | GRADUATES AVAILABLE FOR EMPLOYMENT 8 | GRADUATES EMPLOYED IN THE FIELD 9 | PLACEMENT RATE 10 | GRADUATES EMPLOYED LESS THAN 32 HOURS PER WEEK | GRADUATES EMPLOYED MORE THAN 32 HOURS PER WEEK | STUDENT'S INITIALS BELOW: |
|---------------|-------------------------|---|--|--------------------------|--|--|---------------------------|
|---------------|-------------------------|---|--|--------------------------|--|--|---------------------------|

7“# OF GRADUATES” IS THE NUMBER OF STUDENTS WHO COMPLETED THE PROGRAM WITHIN 100% OF THE PUBLISHED LENGTH.

8“GRADUATES AVAILABLE FOR EMPLOYMENT” MEANS THE NUMBER OF GRADUATES MINUS THE NUMBER OF GRADUATES UNAVAILABLE FOR EMPLOYMENT. GRADUATES UNAVAILABLE FOR EMPLOYMENT MEANS GRADUATES WHO HAVE DIED, BECOME INCARCERATED, ARE CALLED TO ACTIVE MILITARY DUTY, OR ARE INTERNATIONAL STUDENTS WHO DO NOT HAVE A VISA ALLOWING EMPLOYMENT.

9“GRADUATES EMPLOYED IN THE FIELD” ARE GRADUATES WHO REPORT THAT THEY ARE EMPLOYED WITHIN SIX MONTHS OF GRADUATION IN A POSITION REQUIRING THE SKILLS THEY OBTAINED THROUGH THE EDUCATION PROVIDED BY THE SCHOOL.

10“PLACEMENT RATE” IS THE NUMBER OF EMPLOYED GRADUATES DIVIDED BY THE “GRADUATES AVAILABLE FOR EMPLOYMENT”.

| Annual Salary and Wage Reported for Graduates Employed in the Field | BELOW \$30,000 | \$30,000 TO 34,999 | \$35,000 TO 39,999 | \$40,000 TO 44,999 | \$45,000 TO 49,999 | \$50,000 TO 54,999 | \$55,000 TO 59,999 | ABOVE \$60,000 |
|---|----------------|--------------------|--------------------|--------------------|--------------------|--------------------|--------------------|----------------|
|---|----------------|--------------------|--------------------|--------------------|--------------------|--------------------|--------------------|----------------|

“Annual Salaries of the Placement Rate Cohorts” ARE THE ANNUAL SALARIES IN INCREMENTS OF \$5000.00 REPORTED BY THE GRADUATES WHO ARE EMPLOYED WITHIN SIX MONTHS OF GRADUATION IN A POSITION REQUIRING THE SKILLS THEY OBTAINED THROUGH THE EDUCATION PROVIDED BY THE SCHOOL

WEST COAST ULTRASOUND INSTITUTE
 BEVERLY HILLS CAMPUS
 SCHOOL PERFORMANCE FACT SHEET
 2014-15 ACADEMIC YEAR



MAGNETIC RESONANCE IMAGING (18 MONTH PROGRAM)
ASSOCIATE OF OCCUPATIONAL SCIENCE DEGREE PROGRAM

The following charts represent the completion, placement and salary information for our students from the two (2) most recent completed academic years. We are required by the Bureau for Private Postsecondary Education to disclose this information to you prior to accepting your enrollment into West Coast Ultrasound Institute. Please review the information carefully for your chosen program of study. Upon satisfactory examination of your program data, and prior to signing your enrollment agreement, you must initial your understanding and acceptance

| Calendar Year | # OF STUDENTS WHO BEGAN PROGRAM ¹ | STUDENTS AVAILABLE FOR GRADUATION ² | GRADUATES ³ | COMPLETION RATE ⁴ | 150% GRADUATES ⁵ | 150% COMPLETION RATE ⁶ | STUDENT'S INITIALS BELOW: |
|---------------|--|--|------------------------|------------------------------|-----------------------------|-----------------------------------|---------------------------|
| 2012 | 0 | 0 | 0 | 0 | 0 | 0 | |
| 2013 | 12 | 12 | 6 | 50% | 3 | 25% | |

| Calendar Year | # OF GRADUATES ⁷ | GRADUATES AVAILABLE FOR EMPLOYMENT ⁸ | GRADUATES EMPLOYED IN THE FIELD ⁹ | PLACEMENT RATE ¹⁰ | GRADUATES EMPLOYED LESS THAN 32 HOURS PER WEEK | GRADUATES EMPLOYED MORE THAN 32 HOURS PER WEEK | STUDENT'S INITIALS BELOW: |
|---------------|-----------------------------|---|--|------------------------------|--|--|---------------------------|
| 2012 | 0 | 0 | 0 | 0 | 0 | 0 | |
| 2013 | 6 | 4 | 3 | 75% | 1 | 2 | |

| ANNUAL SALARY AND WAGE REPORTED FOR GRADUATES EMPLOYED IN THE FIELD | | | | | | | | | | | |
|---|---|--|----------------|--------------------|--------------------|--|--------------------|--------------------|----------------|-------------------------------|--------------------------|
| Year | GRADUATES AVAILABLE FOR EMPLOYMENT ⁸ | GRADUATES EMPLOYED IN THE FIELD ⁹ | BELOW \$30,000 | \$30,000 TO 34,999 | \$35,000 TO 39,999 | \$40,000 TO 44,999 | \$45,000 TO 49,999 | \$50,000 TO 54,999 | ABOVE \$55,000 | STUDENTS NOT REPORTING SALARY | STUDENT'S INITIALS BELOW |
| 2012 | 0 | 0 | 0 | 0 | 0 | 0 | 0 | 0 | 0 | 0 | |
| 2013 | 4 | 3 | 0 | 1 | 0 | 1 | 0 | 1 | 0 | 0 | |
| 3 YEAR COHORT DEFAULT RATE PUBLISHED BY USDE: | | | | | | % OF ENROLLED STUDENTS RECEIVING FEDERAL STUDENT LOANS: | | | | | |
| 8.9% | | | | | | 82% | | | | | |

This fact sheet is filed with the Bureau for Private Postsecondary Education. Regardless of any information you may have relating to completion rates, placement rates, starting rates, starting salaries, or license exam passage rates, this fact sheet contains the information as calculated pursuant to state Law.

Information regarding a list of employment positions that have been determined to be within the field of training for this program can be obtained along with a list of objective sources supporting salaries claims for this program, by visiting the Career Services Department.

Any questions a student may have regarding this fact sheet that have not been satisfactory answered by the institution may be directed to the Bureau for Private Postsecondary Education at 2535 Capital Oaks Drive, Suite 400, t Sacramento, Ca 95833, www.bppe.ca.gov, (916) 431-6959 telephone, (916) 263-1897 fax.

I certify that I have received the School Performance Fact Sheet, and information regarding completions rates, and salary or wage information included in the School Performance Fact Sheet

 Student Signature

 Date

 Print Name

SCHOOL PERFORMANCE FACT SHEET DEFINITIONS:

| Calendar Year | # OF STUDENTS WHO BEGAN PROGRAM 1 | STUDENTS AVAILABLE FOR GRADUATION 2 | GRADUATES 3 | COMPLETION RATE 4 | 150% GRADUATES RATE 5 | 150% COMPLETION RATE 6 | STUDENT'S INITIALS BELOW: |
|---------------|--|--|--------------------|--------------------------|------------------------------|-------------------------------|---------------------------|
|---------------|--|--|--------------------|--------------------------|------------------------------|-------------------------------|---------------------------|

1“NUMBER OF STUDENTS WHO BEGAN PROGRAM” IS THE NUMBER OF STUDENTS WHO BEGAN WHO ARE SCHEDULED TO COMPLETE THE PROGRAM WITHIN THE REPORTING CALENDAR YEAR.

2 “STUDENTS AVAILABLE FOR GRADUATION” IS THE NUMBER OF STUDENTS WHO BEGAN THE PROGRAM MINUS THE NUMBER OF “STUDENTS UNAVAILABLE FOR GRADUATION”, WHICH MEANS STUDENTS WHO HAVE DIED, BEEN INCARCERATED, OR CALLED TO ACTIVE MILITARY DUTY.

3“GRADUATES” IS THE NUMBER OF STUDENTS WHO COMPLETED THE PROGRAM WITHIN 100% OF THE PUBLISHED LENGTH.

4“COMPLETION RATE” IS THE NUMBER OF GRADUATES DIVIDED BY THE NUMBER OF “STUDENTS AVAILABLE FOR GRADUATION”.

5“150% GRADUATES RATE” IS THE NUMBER OF STUDENTS WHO COMPLETED THE PROGRAM WITHIN 101%-150% OF THE PUBLISHED PROGRAM RATE.

6“150% COMPLETION RATE” IS THE PERCENTAGE OF STUDENTS WHO COMPLETED THE PROGRAM IN THE REPORTED CALENDAR YEAR WITHIN 101% -150% OF THE PUBLISHED LENGTH.

| Calendar Year | # OF GRADUATES 7 | GRADUATES AVAILABLE FOR EMPLOYMENT 8 | GRADUATES EMPLOYED IN THE FIELD 9 | PLACEMENT RATE 10 | GRADUATES EMPLOYED LESS THAN 32 HOURS PER WEEK | GRADUATES EMPLOYED MORE THAN 32 HOURS PER WEEK | STUDENT'S INITIALS BELOW: |
|---------------|-------------------------|---|--|--------------------------|--|--|---------------------------|
|---------------|-------------------------|---|--|--------------------------|--|--|---------------------------|

7“# OF GRADUATES” IS THE NUMBER OF STUDENTS WHO COMPLETED THE PROGRAM WITHIN 100% OF THE PUBLISHED LENGTH.

8“GRADUATES AVAILABLE FOR EMPLOYMENT” MEANS THE NUMBER OF GRADUATES MINUS THE NUMBER OF GRADUATES UNAVAILABLE FOR EMPLOYMENT. GRADUATES UNAVAILABLE FOR EMPLOYMENT MEANS GRADUATES WHO HAVE DIED, BECOME INCARCERATED, ARE CALLED TO ACTIVE MILITARY DUTY, OR ARE INTERNATIONAL STUDENTS WHO DO NOT HAVE A VISA ALLOWING EMPLOYMENT.

9“GRADUATES EMPLOYED IN THE FIELD” ARE GRADUATES WHO REPORT THAT THEY ARE EMPLOYED WITHIN SIX MONTHS OF GRADUATION IN A POSITION REQUIRING THE SKILLS THEY OBTAINED THROUGH THE EDUCATION PROVIDED BY THE SCHOOL.

10“PLACEMENT RATE” IS THE NUMBER OF EMPLOYED GRADUATES DIVIDED BY THE “GRADUATES AVAILABLE FOR EMPLOYMENT”.

| Annual Salary and Wage Reported for Graduates Employed in the Field | BELOW \$30,000 | \$30,000 TO 34,999 | \$35,000 TO 39,999 | \$40,000 TO 44,999 | \$45,000 TO 49,999 | \$50,000 TO 54,999 | \$55,000 TO 59,999 | ABOVE \$60,000 |
|---|----------------|--------------------|--------------------|--------------------|--------------------|--------------------|--------------------|----------------|
|---|----------------|--------------------|--------------------|--------------------|--------------------|--------------------|--------------------|----------------|

“Annual Salaries of the Placement Rate Cohorts” ARE THE ANNUAL SALARIES IN INCREMENTS OF \$5000.00 REPORTED BY THE GRADUATES WHO ARE EMPLOYED WITHIN SIX MONTHS OF GRADUATION IN A POSITION REQUIRING THE SKILLS THEY OBTAINED THROUGH THE EDUCATION PROVIDED BY THE SCHOOL

WEST COAST ULTRASOUND INSTITUTE
 ONTARIO BRANCH CAMPUS
 SCHOOL PERFORMANCE FACT SHEET
 2014-15 ACADEMIC YEAR



MAGNETIC RESONANCE IMAGING (18 MONTH PROGRAM)
ASSOCIATE OF OCCUPATIONAL SCIENCE DEGREE PROGRAM

The following charts represent the completion, placement and salary information for our students from the two (2) most recent completed academic years. We are required by the Bureau for Private Postsecondary Education to disclose this information to you prior to accepting your enrollment into West Coast Ultrasound Institute. Please review the information carefully for your chosen program of study. Upon satisfactory examination of your program data, and prior to signing your enrollment agreement, you must initial your understanding and acceptance

| Calendar Year | # OF STUDENTS WHO BEGAN PROGRAM ¹ | STUDENTS AVAILABLE FOR GRADUATION ² | GRADUATES ³ | COMPLETION RATE ⁴ | 150% GRADUATES ⁵ | 150% COMPLETION RATE ⁶ | STUDENT'S INITIALS BELOW: |
|---------------|--|--|------------------------|------------------------------|-----------------------------|-----------------------------------|---------------------------|
| 2012 | 0 | 0 | 0 | 0 | 0 | 0 | |
| 2013 | 47 | 47 | 15 | 32% | 24 | 51% | |

| Calendar Year | # OF GRADUATES ⁷ | GRADUATES AVAILABLE FOR EMPLOYMENT ⁸ | GRADUATES EMPLOYED IN THE FIELD ⁹ | PLACEMENT RATE ¹⁰ | GRADUATES EMPLOYED LESS THAN 32 HOURS PER WEEK | GRADUATES EMPLOYED MORE THAN 32 HOURS PER WEEK | STUDENT'S INITIALS BELOW: |
|---------------|-----------------------------|---|--|------------------------------|--|--|---------------------------|
| 2012 | 0 | 0 | 0 | 0 | 0 | 0 | |
| 2013 | 15 | 15 | 9 | 60% | 4 | 5 | |

| Year | GRADUATES AVAILABLE FOR EMPLOYMENT ⁸ | GRADUATES EMPLOYED IN THE FIELD ⁹ | ANNUAL SALARY AND WAGE REPORTED FOR GRADUATES EMPLOYED IN THE FIELD | | | | | | | STUDENTS NOT REPORTING SALARY | STUDENT'S INITIALS BELOW |
|--|---|--|---|--|--------------------|--------------------|----------------------|--------------------|----------------|-------------------------------|--------------------------|
| | | | BELOW \$30,000 | \$30,000 TO 34,999 | \$35,000 TO 39,999 | \$40,000 TO 44,999 | \$45,000 TO \$49,999 | \$50,000 TO 54,999 | ABOVE \$55,000 | | |
| 2012 | 0 | 0 | 0 | 0 | 0 | 0 | 0 | 0 | 0 | 0 | |
| 2013 | 15 | 9 | 6 | 0 | 1 | 1 | 0 | 0 | 1 | 0 | |
| 3 YEAR COHORT DEFAULT RATE PUBLISHED BY USDE: | | | | % OF ENROLLED STUDENTS RECEIVING FEDERAL STUDENT LOANS: | | | | | | | |
| 8.9% | | | | 82% | | | | | | | |

This fact sheet is filed with the Bureau for Private Postsecondary Education. Regardless of any information you may have relating to completion rates, placement rates, starting rates, starting salaries, or license exam passage rates, this fact sheet contains the information as calculated pursuant to state Law.

Information regarding a list of employment positions that have been determined to be within the field of training for this program can be obtained along with a list of objective sources supporting salaries claims for this program, by visiting the Career Services Department.

Any questions a student may have regarding this fact sheet that have not been satisfactory answered by the institution may be directed to the Bureau for Private Postsecondary Education at 2535 Capital Oaks Drive, Suite 400, t Sacramento, Ca 95833, www.bppe.ca.gov, (916) 431-6959 telephone, (916) 263-1897 fax.

I certify that I have received the School Performance Fact Sheet, and information regarding completions rates, and salary or wage information included in the School Performance Fact Sheet

 Student Signature

 Date

 Print Name

SCHOOL PERFORMANCE FACT SHEET DEFINITIONS:

| Calendar Year | # OF STUDENTS WHO BEGAN PROGRAM 1 | STUDENTS AVAILABLE FOR GRADUATION 2 | GRADUATES 3 | COMPLETION RATE 4 | 150% GRADUATES RATE 5 | 150% COMPLETION RATE 6 | STUDENT'S INITIALS BELOW: |
|---------------|--|--|--------------------|--------------------------|------------------------------|-------------------------------|---------------------------|
|---------------|--|--|--------------------|--------------------------|------------------------------|-------------------------------|---------------------------|

1“NUMBER OF STUDENTS WHO BEGAN PROGRAM” IS THE NUMBER OF STUDENTS WHO BEGAN WHO ARE SCHEDULED TO COMPLETE THE PROGRAM WITHIN THE REPORTING CALENDAR YEAR.

2 “STUDENTS AVAILABLE FOR GRADUATION” IS THE NUMBER OF STUDENTS WHO BEGAN THE PROGRAM MINUS THE NUMBER OF “STUDENTS UNAVAILABLE FOR GRADUATION”, WHICH MEANS STUDENTS WHO HAVE DIED, BEEN INCARCERATED, OR CALLED TO ACTIVE MILITARY DUTY.

3“GRADUATES” IS THE NUMBER OF STUDENTS WHO COMPLETED THE PROGRAM WITHIN 100% OF THE PUBLISHED LENGTH.

4“COMPLETION RATE” IS THE NUMBER OF GRADUATES DIVIDED BY THE NUMBER OF “STUDENTS AVAILABLE FOR GRADUATION”.

5“150% GRADUATES RATE” IS THE NUMBER OF STUDENTS WHO COMPLETED THE PROGRAM WITHIN 101%-150% OF THE PUBLISHED PROGRAM RATE.

6“150% COMPLETION RATE” IS THE PERCENTAGE OF STUDENTS WHO COMPLETED THE PROGRAM IN THE REPORTED CALENDAR YEAR WITHIN 101% -150% OF THE PUBLISHED LENGTH.

| Calendar Year | # OF GRADUATES 7 | GRADUATES AVAILABLE FOR EMPLOYMENT 8 | GRADUATES EMPLOYED IN THE FIELD 9 | PLACEMENT RATE 10 | GRADUATES EMPLOYED LESS THAN 32 HOURS PER WEEK | GRADUATES EMPLOYED MORE THAN 32 HOURS PER WEEK | STUDENT'S INITIALS BELOW: |
|---------------|-------------------------|---|--|--------------------------|--|--|---------------------------|
|---------------|-------------------------|---|--|--------------------------|--|--|---------------------------|

7“# OF GRADUATES” IS THE NUMBER OF STUDENTS WHO COMPLETED THE PROGRAM WITHIN 100% OF THE PUBLISHED LENGTH.

8“GRADUATES AVAILABLE FOR EMPLOYMENT” MEANS THE NUMBER OF GRADUATES MINUS THE NUMBER OF GRADUATES UNAVAILABLE FOR EMPLOYMENT. GRADUATES UNAVAILABLE FOR EMPLOYMENT MEANS GRADUATES WHO HAVE DIED, BECOME INCARCERATED, ARE CALLED TO ACTIVE MILITARY DUTY, OR ARE INTERNATIONAL STUDENTS WHO DO NOT HAVE A VISA ALLOWING EMPLOYMENT.

9“GRADUATES EMPLOYED IN THE FIELD” ARE GRADUATES WHO REPORT THAT THEY ARE EMPLOYED WITHIN SIX MONTHS OF GRADUATION IN A POSITION REQUIRING THE SKILLS THEY OBTAINED THROUGH THE EDUCATION PROVIDED BY THE SCHOOL.

10“PLACEMENT RATE” IS THE NUMBER OF EMPLOYED GRADUATES DIVIDED BY THE “GRADUATES AVAILABLE FOR EMPLOYMENT”.

| Annual Salary and Wage Reported for Graduates Employed in the Field | BELOW \$30,000 | \$30,000 TO 34,999 | \$35,000 TO 39,999 | \$40,000 TO 44,999 | \$45,000 TO 49,999 | \$50,000 TO 54,999 | \$55,000 TO 59,999 | ABOVE \$60,000 |
|---|----------------|--------------------|--------------------|--------------------|--------------------|--------------------|--------------------|----------------|
|---|----------------|--------------------|--------------------|--------------------|--------------------|--------------------|--------------------|----------------|

“Annual Salaries of the Placement Rate Cohorts” ARE THE ANNUAL SALARIES IN INCREMENTS OF \$5000.00 REPORTED BY THE GRADUATES WHO ARE EMPLOYED WITHIN SIX MONTHS OF GRADUATION IN A POSITION REQUIRING THE SKILLS THEY OBTAINED THROUGH THE EDUCATION PROVIDED BY THE SCHOOL

WEST COAST ULTRASOUND INSTITUTE
 BEVERLY HILLS CAMPUS
 SCHOOL PERFORMANCE FACT SHEET
 2014-15 ACADEMIC YEAR



**MAGNETIC RESONANCE IMAGING LONG
 FIFTEEN MONTH DIPLOMA PROGRAM**

The following charts represent the completion, placement and salary information for our students from the two (2) most recent completed academic years. We are required by the Bureau for Private Postsecondary Education to disclose this information to you prior to accepting your enrollment into West Coast Ultrasound Institute. Please review the information carefully for your chosen program of study. Upon satisfactory examination of your program data, and prior to signing your enrollment agreement, you must initial your understanding and acceptance

| Calendar Year | # OF STUDENTS WHO BEGAN PROGRAM ¹ | STUDENTS AVAILABLE FOR GRADUATION ² | GRADUATES ³ | COMPLETION RATE ⁴ | 150% GRADUATES ⁵ | 150% COMPLETION RATE ⁶ | STUDENT'S INITIALS BELOW: |
|---------------|--|--|------------------------|------------------------------|-----------------------------|-----------------------------------|---------------------------|
| 2012 | 8 | 8 | 4 | 50% | 0 | 0 | |
| 2013 | 1 | 1 | 1 | 100% | 0 | 0 | |

| Calendar Year | # OF GRADUATES ⁷ | GRADUATES AVAILABLE FOR EMPLOYMENT ⁸ | GRADUATES EMPLOYED IN THE FIELD ⁹ | PLACEMENT RATE ¹⁰ | GRADUATES EMPLOYED LESS THAN 32 HOURS PER WEEK | GRADUATES EMPLOYED MORE THAN 32 HOURS PER WEEK | STUDENT'S INITIALS BELOW: |
|---------------|-----------------------------|---|--|------------------------------|--|--|---------------------------|
| 2012 | 4 | 3 | 2 | 67% | 1 | 1 | |
| 2013 | 1 | 1 | 1 | 100% | 0 | 1 | |

| Year | GRADUATES AVAILABLE FOR EMPLOYMENT ⁸ | GRADUATES EMPLOYED IN THE FIELD ⁹ | ANNUAL SALARY AND WAGE REPORTED FOR GRADUATES EMPLOYED IN THE FIELD | | | | | | | STUDENTS NOT REPORTING SALARY | STUDENT'S INITIALS BELOW |
|------|---|--|---|--------------------|--------------------|--------------------|--------------------|--------------------|----------------|-------------------------------|--------------------------|
| | | | BELOW \$30,000 | \$30,000 TO 34,999 | \$35,000 TO 39,999 | \$40,000 TO 44,999 | \$45,000 TO 49,999 | \$50,000 TO 54,999 | ABOVE \$55,000 | | |
| 2012 | 3 | 2 | 1 | 0 | 0 | 0 | 0 | 1 | 0 | 0 | |
| 2013 | 1 | 1 | 0 | 0 | 0 | 0 | 0 | 1 | 0 | 0 | |

| | |
|--|--|
| 3 YEAR COHORT DEFAULT RATE PUBLISHED BY USDE: | % OF ENROLLED STUDENTS RECEIVING FEDERAL STUDENT LOANS: |
| 8.9% | 82% |

This fact sheet is filed with the Bureau for Private Postsecondary Education. Regardless of any information you may have relating to completion rates, placement rates, starting rates, starting salaries, or license exam passage rates, this fact sheet contains the information as calculated pursuant to state Law.

Information regarding a list of employment positions that have been determined to be within the field of training for this program can be obtained along with a list of objective sources supporting salaries claims for this program, by visiting the Career Services Department.

Any questions a student may have regarding this fact sheet that have not been satisfactory answered by the institution may be directed to the Bureau for Private Postsecondary Education at 2535 Capital Oaks Drive, Suite 400, t Sacramento, Ca 95833, www.bppe.ca.gov, (916) 431-6959 telephone, (916) 263-1897 fax.

I certify that I have received the School Performance Fact Sheet, and information regarding completions rates, and salary or wage information included in the School Performance Fact Sheet

 Student Signature

 Date

 Print Name

SCHOOL PERFORMANCE FACT SHEET DEFINITIONS:

| Calendar Year | # OF STUDENTS WHO BEGAN PROGRAM 1 | STUDENTS AVAILABLE FOR GRADUATION 2 | GRADUATES 3 | COMPLETION RATE 4 | 150% GRADUATES RATE 5 | 150% COMPLETION RATE 6 | STUDENT'S INITIALS BELOW: |
|---------------|--|--|--------------------|--------------------------|------------------------------|-------------------------------|---------------------------|
|---------------|--|--|--------------------|--------------------------|------------------------------|-------------------------------|---------------------------|

1“NUMBER OF STUDENTS WHO BEGAN PROGRAM” IS THE NUMBER OF STUDENTS WHO BEGAN WHO ARE SCHEDULED TO COMPLETE THE PROGRAM WITHIN THE REPORTING CALENDAR YEAR.

2 “STUDENTS AVAILABLE FOR GRADUATION” IS THE NUMBER OF STUDENTS WHO BEGAN THE PROGRAM MINUS THE NUMBER OF “STUDENTS UNAVAILABLE FOR GRADUATION”, WHICH MEANS STUDENTS WHO HAVE DIED, BEEN INCARCERATED, OR CALLED TO ACTIVE MILITARY DUTY.

3“GRADUATES” IS THE NUMBER OF STUDENTS WHO COMPLETED THE PROGRAM WITHIN 100% OF THE PUBLISHED LENGTH.

4“COMPLETION RATE” IS THE NUMBER OF GRADUATES DIVIDED BY THE NUMBER OF “STUDENTS AVAILABLE FOR GRADUATION”.

5“150% GRADUATES RATE” IS THE NUMBER OF STUDENTS WHO COMPLETED THE PROGRAM WITHIN 101%-150% OF THE PUBLISHED PROGRAM RATE.

6“150% COMPLETION RATE” IS THE PERCENTAGE OF STUDENTS WHO COMPLETED THE PROGRAM IN THE REPORTED CALENDAR YEAR WITHIN 101% -150% OF THE PUBLISHED LENGTH.

| Calendar Year | # OF GRADUATES 7 | GRADUATES AVAILABLE FOR EMPLOYMENT 8 | GRADUATES EMPLOYED IN THE FIELD 9 | PLACEMENT RATE 10 | GRADUATES EMPLOYED LESS THAN 32 HOURS PER WEEK | GRADUATES EMPLOYED MORE THAN 32 HOURS PER WEEK | STUDENT'S INITIALS BELOW: |
|---------------|-------------------------|---|--|--------------------------|--|--|---------------------------|
|---------------|-------------------------|---|--|--------------------------|--|--|---------------------------|

7“# OF GRADUATES” IS THE NUMBER OF STUDENTS WHO COMPLETED THE PROGRAM WITHIN 100% OF THE PUBLISHED LENGTH.

8“GRADUATES AVAILABLE FOR EMPLOYMENT” MEANS THE NUMBER OF GRADUATES MINUS THE NUMBER OF GRADUATES UNAVAILABLE FOR EMPLOYMENT. GRADUATES UNAVAILABLE FOR EMPLOYMENT MEANS GRADUATES WHO HAVE DIED, BECOME INCARCERATED, ARE CALLED TO ACTIVE MILITARY DUTY, OR ARE INTERNATIONAL STUDENTS WHO DO NOT HAVE A VISA ALLOWING EMPLOYMENT.

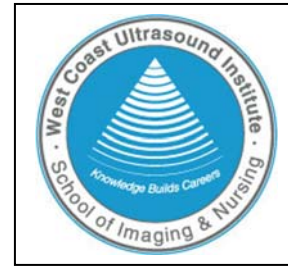
9“GRADUATES EMPLOYED IN THE FIELD” ARE GRADUATES WHO REPORT THAT THEY ARE EMPLOYED WITHIN SIX MONTHS OF GRADUATION IN A POSITION REQUIRING THE SKILLS THEY OBTAINED THROUGH THE EDUCATION PROVIDED BY THE SCHOOL.

10“PLACEMENT RATE” IS THE NUMBER OF EMPLOYED GRADUATES DIVIDED BY THE “GRADUATES AVAILABLE FOR EMPLOYMENT”.

| Annual Salary and Wage Reported for Graduates Employed in the Field | BELOW \$30,000 | \$30,000 TO 34,999 | \$35,000 TO 39,999 | \$40,000 TO 44,999 | \$45,000 TO 49,999 | \$50,000 TO 54,999 | \$55,000 TO 59,999 | ABOVE \$60,000 |
|---|----------------|--------------------|--------------------|--------------------|--------------------|--------------------|--------------------|----------------|
|---|----------------|--------------------|--------------------|--------------------|--------------------|--------------------|--------------------|----------------|

“Annual Salaries of the Placement Rate Cohorts” ARE THE ANNUAL SALARIES IN INCREMENTS OF \$5000.00 REPORTED BY THE GRADUATES WHO ARE EMPLOYED WITHIN SIX MONTHS OF GRADUATION IN A POSITION REQUIRING THE SKILLS THEY OBTAINED THROUGH THE EDUCATION PROVIDED BY THE SCHOOL

WEST COAST ULTRASOUND INSTITUTE
 ONTARIO BRANCH CAMPUS
 SCHOOL PERFORMANCE FACT SHEET
 2014-15 ACADEMIC YEAR



**MAGNETIC RESONANCE IMAGING LONG
 FIFTEEN MONTH DIPLOMA PROGRAM**

The following charts represent the completion, placement and salary information for our students from the two (2) most recent completed academic years. We are required by the Bureau for Private Postsecondary Education to disclose this information to you prior to accepting your enrollment into West Coast Ultrasound Institute. Please review the information carefully for your chosen program of study. Upon satisfactory examination of your program data, and prior to signing your enrollment agreement, you must initial your understanding and acceptance

| Calendar Year | # OF STUDENTS WHO BEGAN PROGRAM ¹ | STUDENTS AVAILABLE FOR GRADUATION ² | GRADUATES ³ | COMPLETION RATE ⁴ | 150% GRADUATES ⁵ | 150% COMPLETION RATE ⁶ | STUDENT'S INITIALS BELOW: |
|---------------|--|--|------------------------|------------------------------|-----------------------------|-----------------------------------|---------------------------|
| 2012 | 17 | 17 | 6 | 35% | 5 | 29% | |
| 2013 | 3 | 3 | 2 | 67% | 0 | 0 | |

| Calendar Year | # OF GRADUATES ⁷ | GRADUATES AVAILABLE FOR EMPLOYMENT ⁸ | GRADUATES EMPLOYED IN THE FIELD ⁹ | PLACEMENT RATE ¹⁰ | GRADUATES EMPLOYED LESS THAN 32 HOURS PER WEEK | GRADUATES EMPLOYED MORE THAN 32 HOURS PER WEEK | STUDENT'S INITIALS BELOW: |
|---------------|-----------------------------|---|--|------------------------------|--|--|---------------------------|
| 2012 | 6 | 6 | 6 | 100% | 2 | 4 | |
| 2013 | 2 | 2 | 1 | 50% | 0 | 1 | |

| ANNUAL SALARY AND WAGE REPORTED FOR GRADUATES EMPLOYED IN THE FIELD | | | | | | | | | | | |
|---|---|--|----------------|--------------------|--------------------|--------------------|--------------------|--------------------|----------------|-------------------------------|--------------------------|
| Year | GRADUATES AVAILABLE FOR EMPLOYMENT ⁸ | GRADUATES EMPLOYED IN THE FIELD ⁹ | BELOW \$30,000 | \$30,000 TO 34,999 | \$35,000 TO 39,999 | \$40,000 TO 44,999 | \$45,000 TO 49,999 | \$50,000 TO 54,999 | ABOVE \$55,000 | STUDENTS NOT REPORTING SALARY | STUDENT'S INITIALS BELOW |
| 2012 | 6 | 6 | 4 | 0 | 0 | 0 | 0 | 0 | 2 | 0 | |
| 2013 | 2 | 1 | 0 | 0 | 0 | 0 | 0 | 0 | 1 | 0 | |

| | |
|--|--|
| 3 YEAR COHORT DEFAULT RATE PUBLISHED BY USDE: | % OF ENROLLED STUDENTS RECEIVING FEDERAL STUDENT LOANS: |
| 8.9% | 82% |

This fact sheet is filed with the Bureau for Private Postsecondary Education. Regardless of any information you may have relating to completion rates, placement rates, starting rates, starting salaries, or license exam passage rates, this fact sheet contains the information as calculated pursuant to state Law.

Information regarding a list of employment positions that have been determined to be within the field of training for this program can be obtained along with a list of objective sources supporting salaries claims for this program, by visiting the Career Services Department.

Any questions a student may have regarding this fact sheet that have not been satisfactory answered by the institution may be directed to the Bureau for Private Postsecondary Education at 2535 Capital Oaks Drive, Suite 400, t Sacramento, Ca 95833, www.bppe.ca.gov, (916) 431-6959 telephone, (916) 263-1897 fax.

I certify that I have received the School Performance Fact Sheet, and information regarding completions rates, and salary or wage information included in the School Performance Fact Sheet

 Student Signature

 Date

 Print Name

SCHOOL PERFORMANCE FACT SHEET DEFINITIONS:

| Calendar Year | # OF STUDENTS WHO BEGAN PROGRAM 1 | STUDENTS AVAILABLE FOR GRADUATION 2 | GRADUATES 3 | COMPLETION RATE 4 | 150% GRADUATES RATE 5 | 150% COMPLETION RATE 6 | STUDENT'S INITIALS BELOW: |
|---------------|--|--|--------------------|--------------------------|------------------------------|-------------------------------|---------------------------|
|---------------|--|--|--------------------|--------------------------|------------------------------|-------------------------------|---------------------------|

1“NUMBER OF STUDENTS WHO BEGAN PROGRAM” IS THE NUMBER OF STUDENTS WHO BEGAN WHO ARE SCHEDULED TO COMPLETE THE PROGRAM WITHIN THE REPORTING CALENDAR YEAR.

2 “STUDENTS AVAILABLE FOR GRADUATION” IS THE NUMBER OF STUDENTS WHO BEGAN THE PROGRAM MINUS THE NUMBER OF “STUDENTS UNAVAILABLE FOR GRADUATION”, WHICH MEANS STUDENTS WHO HAVE DIED, BEEN INCARCERATED, OR CALLED TO ACTIVE MILITARY DUTY.

3“GRADUATES” IS THE NUMBER OF STUDENTS WHO COMPLETED THE PROGRAM WITHIN 100% OF THE PUBLISHED LENGTH.

4“COMPLETION RATE” IS THE NUMBER OF GRADUATES DIVIDED BY THE NUMBER OF “STUDENTS AVAILABLE FOR GRADUATION”.

5“150% GRADUATES RATE” IS THE NUMBER OF STUDENTS WHO COMPLETED THE PROGRAM WITHIN 101%-150% OF THE PUBLISHED PROGRAM RATE.

6“150% COMPLETION RATE” IS THE PERCENTAGE OF STUDENTS WHO COMPLETED THE PROGRAM IN THE REPORTED CALENDAR YEAR WITHIN 101% -150% OF THE PUBLISHED LENGTH.

| Calendar Year | # OF GRADUATES 7 | GRADUATES AVAILABLE FOR EMPLOYMENT 8 | GRADUATES EMPLOYED IN THE FIELD 9 | PLACEMENT RATE 10 | GRADUATES EMPLOYED LESS THAN 32 HOURS PER WEEK | GRADUATES EMPLOYED MORE THAN 32 HOURS PER WEEK | STUDENT'S INITIALS BELOW: |
|---------------|-------------------------|---|--|--------------------------|--|--|---------------------------|
|---------------|-------------------------|---|--|--------------------------|--|--|---------------------------|

7“# OF GRADUATES” IS THE NUMBER OF STUDENTS WHO COMPLETED THE PROGRAM WITHIN 100% OF THE PUBLISHED LENGTH.

8“GRADUATES AVAILABLE FOR EMPLOYMENT” MEANS THE NUMBER OF GRADUATES MINUS THE NUMBER OF GRADUATES UNAVAILABLE FOR EMPLOYMENT. GRADUATES UNAVAILABLE FOR EMPLOYMENT MEANS GRADUATES WHO HAVE DIED, BECOME INCARCERATED, ARE CALLED TO ACTIVE MILITARY DUTY, OR ARE INTERNATIONAL STUDENTS WHO DO NOT HAVE A VISA ALLOWING EMPLOYMENT.

9“GRADUATES EMPLOYED IN THE FIELD” ARE GRADUATES WHO REPORT THAT THEY ARE EMPLOYED WITHIN SIX MONTHS OF GRADUATION IN A POSITION REQUIRING THE SKILLS THEY OBTAINED THROUGH THE EDUCATION PROVIDED BY THE SCHOOL.

10“PLACEMENT RATE” IS THE NUMBER OF EMPLOYED GRADUATES DIVIDED BY THE “GRADUATES AVAILABLE FOR EMPLOYMENT”.

| Annual Salary and Wage Reported for Graduates Employed in the Field | BELOW \$30,000 | \$30,000 TO 34,999 | \$35,000 TO 39,999 | \$40,000 TO 44,999 | \$45,000 TO 49,999 | \$50,000 TO 54,999 | \$55,000 TO 59,999 | ABOVE \$60,000 |
|---|----------------|--------------------|--------------------|--------------------|--------------------|--------------------|--------------------|----------------|
|---|----------------|--------------------|--------------------|--------------------|--------------------|--------------------|--------------------|----------------|

“Annual Salaries of the Placement Rate Cohorts” ARE THE ANNUAL SALARIES IN INCREMENTS OF \$5000.00 REPORTED BY THE GRADUATES WHO ARE EMPLOYED WITHIN SIX MONTHS OF GRADUATION IN A POSITION REQUIRING THE SKILLS THEY OBTAINED THROUGH THE EDUCATION PROVIDED BY THE SCHOOL

WEST COAST ULTRASOUND INSTITUTE
 BEVERLY HILLS CAMPUS
 SCHOOL PERFORMANCE FACT SHEET
 2014-15 ACADEMIC YEAR



**MAGNETIC RESONANCE IMAGING SHORT
 NINE MONTH DIPLOMA PROGRAM**

The following charts represent the completion, placement and salary information for our students from the two (2) most recent completed academic years. We are required by the Bureau for Private Postsecondary Education to disclose this information to you prior to accepting your enrollment into West Coast Ultrasound Institute. Please review the information carefully for your chosen program of study. Upon satisfactory examination of your program data, and prior to signing your enrollment agreement, you must initial your understanding and acceptance

| Calendar Year | # OF STUDENTS WHO BEGAN PROGRAM ¹ | STUDENTS AVAILABLE FOR GRADUATION ² | GRADUATES ³ | COMPLETION RATE ⁴ | 150% GRADUATES ⁵ | 150% COMPLETION RATE ⁶ | STUDENT'S INITIALS BELOW: |
|---------------|--|--|------------------------|------------------------------|-----------------------------|-----------------------------------|---------------------------|
| 2012 | 1 | 1 | 0 | 0 | 0 | 0 | |
| 2013 | 3 | 3 | 2 | 67% | 0 | 0 | |

| Calendar Year | # OF GRADUATES ⁷ | GRADUATES AVAILABLE FOR EMPLOYMENT ⁸ | GRADUATES EMPLOYED IN THE FIELD ⁹ | PLACEMENT RATE ¹⁰ | GRADUATES EMPLOYED LESS THAN 32 HOURS PER WEEK | GRADUATES EMPLOYED MORE THAN 32 HOURS PER WEEK | STUDENT'S INITIALS BELOW: |
|---------------|-----------------------------|---|--|------------------------------|--|--|---------------------------|
| 2012 | 0 | 0 | 0 | 0 | 0 | 0 | |
| 2013 | 2 | 1 | 1 | 100% | 0 | 1 | |

ANNUAL SALARY AND WAGE REPORTED FOR GRADUATES EMPLOYED IN THE FIELD

| Year | GRADUATES AVAILABLE FOR EMPLOYMENT ⁸ | GRADUATES EMPLOYED IN THE FIELD ⁹ | BELOW \$30,000 | \$30,000 TO 34,999 | \$35,000 TO 39,999 | \$40,000 TO 44,999 | \$45,000 TO 49,999 | \$50,000 TO 54,999 | ABOVE \$55,000 | STUDENTS NOT REPORTING SALARY | STUDENT'S INITIALS BELOW |
|------|---|--|----------------|--------------------|--------------------|--------------------|--------------------|--------------------|----------------|-------------------------------|--------------------------|
| 2012 | 0 | 0 | 0 | 0 | 0 | 0 | 0 | 0 | 0 | 0 | |
| 2013 | 1 | 1 | 0 | 0 | 0 | 0 | 0 | 0 | 1 | 0 | |

| | |
|--|--|
| 3 YEAR COHORT DEFAULT RATE PUBLISHED BY USDE: | % OF ENROLLED STUDENTS RECEIVING FEDERAL STUDENT LOANS: |
| 8.9% | 82% |

This fact sheet is filed with the Bureau for Private Postsecondary Education. Regardless of any information you may have relating to completion rates, placement rates, starting rates, starting salaries, or license exam passage rates, this fact sheet contains the information as calculated pursuant to state Law.

Information regarding a list of employment positions that have been determined to be within the field of training for this program can be obtained along with a list of objective sources supporting salaries claims for this program, by visiting the Career Services Department.

Any questions a student may have regarding this fact sheet that have not been satisfactory answered by the institution may be directed to the Bureau for Private Postsecondary Education at 2535 Capital Oaks Drive, Suite 400, t Sacramento, Ca 95833, www.bppe.ca.gov, (916) 431-6959 telephone, (916) 263-1897 fax.

I certify that I have received the School Performance Fact Sheet, and information regarding completions rates, and salary or wage information included in the School Performance Fact Sheet

 Student Signature

 Date

 Print Name

SCHOOL PERFORMANCE FACT SHEET DEFINITIONS:

| Calendar Year | # OF STUDENTS WHO BEGAN PROGRAM 1 | STUDENTS AVAILABLE FOR GRADUATION 2 | GRADUATES 3 | COMPLETION RATE 4 | 150% GRADUATES RATE 5 | 150% COMPLETION RATE 6 | STUDENT'S INITIALS BELOW: |
|---------------|--|--|--------------------|--------------------------|------------------------------|-------------------------------|---------------------------|
|---------------|--|--|--------------------|--------------------------|------------------------------|-------------------------------|---------------------------|

1“NUMBER OF STUDENTS WHO BEGAN PROGRAM” IS THE NUMBER OF STUDENTS WHO BEGAN WHO ARE SCHEDULED TO COMPLETE THE PROGRAM WITHIN THE REPORTING CALENDAR YEAR.

2 “STUDENTS AVAILABLE FOR GRADUATION” IS THE NUMBER OF STUDENTS WHO BEGAN THE PROGRAM MINUS THE NUMBER OF “STUDENTS UNAVAILABLE FOR GRADUATION”, WHICH MEANS STUDENTS WHO HAVE DIED, BEEN INCARCERATED, OR CALLED TO ACTIVE MILITARY DUTY.

3“GRADUATES” IS THE NUMBER OF STUDENTS WHO COMPLETED THE PROGRAM WITHIN 100% OF THE PUBLISHED LENGTH.

4“COMPLETION RATE” IS THE NUMBER OF GRADUATES DIVIDED BY THE NUMBER OF “STUDENTS AVAILABLE FOR GRADUATION”.

5“150% GRADUATES RATE” IS THE NUMBER OF STUDENTS WHO COMPLETED THE PROGRAM WITHIN 101%-150% OF THE PUBLISHED PROGRAM RATE.

6“150% COMPLETION RATE” IS THE PERCENTAGE OF STUDENTS WHO COMPLETED THE PROGRAM IN THE REPORTED CALENDAR YEAR WITHIN 101% -150% OF THE PUBLISHED LENGTH.

| Calendar Year | # OF GRADUATES 7 | GRADUATES AVAILABLE FOR EMPLOYMENT 8 | GRADUATES EMPLOYED IN THE FIELD 9 | PLACEMENT RATE 10 | GRADUATES EMPLOYED LESS THAN 32 HOURS PER WEEK | GRADUATES EMPLOYED MORE THAN 32 HOURS PER WEEK | STUDENT'S INITIALS BELOW: |
|---------------|-------------------------|---|--|--------------------------|--|--|---------------------------|
|---------------|-------------------------|---|--|--------------------------|--|--|---------------------------|

7“# OF GRADUATES” IS THE NUMBER OF STUDENTS WHO COMPLETED THE PROGRAM WITHIN 100% OF THE PUBLISHED LENGTH.

8“GRADUATES AVAILABLE FOR EMPLOYMENT” MEANS THE NUMBER OF GRADUATES MINUS THE NUMBER OF GRADUATES UNAVAILABLE FOR EMPLOYMENT. GRADUATES UNAVAILABLE FOR EMPLOYMENT MEANS GRADUATES WHO HAVE DIED, BECOME INCARCERATED, ARE CALLED TO ACTIVE MILITARY DUTY, OR ARE INTERNATIONAL STUDENTS WHO DO NOT HAVE A VISA ALLOWING EMPLOYMENT.

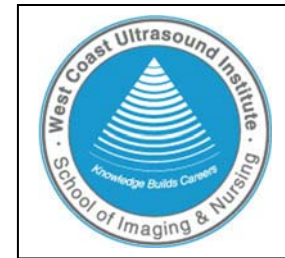
9“GRADUATES EMPLOYED IN THE FIELD” ARE GRADUATES WHO REPORT THAT THEY ARE EMPLOYED WITHIN SIX MONTHS OF GRADUATION IN A POSITION REQUIRING THE SKILLS THEY OBTAINED THROUGH THE EDUCATION PROVIDED BY THE SCHOOL.

10“PLACEMENT RATE” IS THE NUMBER OF EMPLOYED GRADUATES DIVIDED BY THE “GRADUATES AVAILABLE FOR EMPLOYMENT”.

| Annual Salary and Wage Reported for Graduates Employed in the Field | BELOW \$30,000 | \$30,000 TO 34,999 | \$35,000 TO 39,999 | \$40,000 TO 44,999 | \$45,000 TO 49,999 | \$50,000 TO 54,999 | \$55,000 TO 59,999 | ABOVE \$60,000 |
|---|----------------|--------------------|--------------------|--------------------|--------------------|--------------------|--------------------|----------------|
|---|----------------|--------------------|--------------------|--------------------|--------------------|--------------------|--------------------|----------------|

“Annual Salaries of the Placement Rate Cohorts” ARE THE ANNUAL SALARIES IN INCREMENTS OF \$5000.00 REPORTED BY THE GRADUATES WHO ARE EMPLOYED WITHIN SIX MONTHS OF GRADUATION IN A POSITION REQUIRING THE SKILLS THEY OBTAINED THROUGH THE EDUCATION PROVIDED BY THE SCHOOL

WEST COAST ULTRASOUND INSTITUTE
 ONTARIO BRANCH CAMPUS
 SCHOOL PERFORMANCE FACT SHEET
 2014-15 ACADEMIC YEAR



**MAGNETIC RESONANCE IMAGING SHORT
 NINE MONTH DIPLOMA PROGRAM**

The following charts represent the completion, placement and salary information for our students from the two (2) most recent completed academic years. We are required by the Bureau for Private Postsecondary Education to disclose this information to you prior to accepting your enrollment into West Coast Ultrasound Institute. Please review the information carefully for your chosen program of study. Upon satisfactory examination of your program data, and prior to signing your enrollment agreement, you must initial your understanding and acceptance

| Calendar Year | # OF STUDENTS WHO BEGAN PROGRAM ¹ | STUDENTS AVAILABLE FOR GRADUATION ² | GRADUATES ³ | COMPLETION RATE ⁴ | 150% GRADUATES ⁵ | 150% COMPLETION RATE ⁶ | STUDENT'S INITIALS BELOW: |
|---------------|--|--|------------------------|------------------------------|-----------------------------|-----------------------------------|---------------------------|
| 2012 | 1 | 1 | 1 | 100% | 0 | 0 | |
| 2013 | 3 | 3 | 2 | 67% | 0 | 0 | |

| Calendar Year | # OF GRADUATES ⁷ | GRADUATES AVAILABLE FOR EMPLOYMENT ⁸ | GRADUATES EMPLOYED IN THE FIELD ⁹ | PLACEMENT RATE ¹⁰ | GRADUATES EMPLOYED LESS THAN 32 HOURS PER WEEK | GRADUATES EMPLOYED MORE THAN 32 HOURS PER WEEK | STUDENT'S INITIALS BELOW: |
|---------------|-----------------------------|---|--|------------------------------|--|--|---------------------------|
| 2012 | 1 | 1 | 1 | 100% | 0 | 1 | |
| 2013 | 2 | 2 | 1 | 50% | 1 | 0 | |

| ANNUAL SALARY AND WAGE REPORTED FOR GRADUATES EMPLOYED IN THE FIELD | | | | | | | | | | | |
|---|---|--|----------------|--------------------|--------------------|--------------------|--------------------|--------------------|----------------|-------------------------------|--------------------------|
| Year | GRADUATES AVAILABLE FOR EMPLOYMENT ⁸ | GRADUATES EMPLOYED IN THE FIELD ⁹ | BELOW \$30,000 | \$30,000 TO 34,999 | \$35,000 TO 39,999 | \$40,000 TO 44,999 | \$45,000 TO 49,999 | \$50,000 TO 54,999 | ABOVE \$55,000 | STUDENTS NOT REPORTING SALARY | STUDENT'S INITIALS BELOW |
| 2012 | 1 | 1 | 0 | 0 | 0 | 0 | 0 | 0 | 1 | 0 | |
| 2013 | 2 | 1 | 1 | 0 | 0 | 0 | 0 | 0 | 0 | 0 | |

| | |
|--|--|
| 3 YEAR COHORT DEFAULT RATE PUBLISHED BY USDE: | % OF ENROLLED STUDENTS RECEIVING FEDERAL STUDENT LOANS: |
| 8.9% | 82% |

This fact sheet is filed with the Bureau for Private Postsecondary Education. Regardless of any information you may have relating to completion rates, placement rates, starting rates, starting salaries, or license exam passage rates, this fact sheet contains the information as calculated pursuant to state Law.

Information regarding a list of employment positions that have been determined to be within the field of training for this program can be obtained along with a list of objective sources supporting salaries claims for this program, by visiting the Career Services Department.

Any questions a student may have regarding this fact sheet that have not been satisfactory answered by the institution may be directed to the Bureau for Private Postsecondary Education at 2535 Capital Oaks Drive, Suite 400, t Sacramento, Ca 95833, www.bppe.ca.gov, (916) 431-6959 telephone, (916) 263-1897 fax.

I certify that I have received the School Performance Fact Sheet, and information regarding completions rates, and salary or wage information included in the School Performance Fact Sheet

 Student Signature

 Date

 Print Name

SCHOOL PERFORMANCE FACT SHEET DEFINITIONS:

| Calendar Year | # OF STUDENTS WHO BEGAN PROGRAM 1 | STUDENTS AVAILABLE FOR GRADUATION 2 | GRADUATES 3 | COMPLETION RATE 4 | 150% GRADUATES RATE 5 | 150% COMPLETION RATE 6 | STUDENT'S INITIALS BELOW: |
|---------------|--|--|--------------------|--------------------------|------------------------------|-------------------------------|---------------------------|
|---------------|--|--|--------------------|--------------------------|------------------------------|-------------------------------|---------------------------|

1“NUMBER OF STUDENTS WHO BEGAN PROGRAM” IS THE NUMBER OF STUDENTS WHO BEGAN WHO ARE SCHEDULED TO COMPLETE THE PROGRAM WITHIN THE REPORTING CALENDAR YEAR.

2 “STUDENTS AVAILABLE FOR GRADUATION” IS THE NUMBER OF STUDENTS WHO BEGAN THE PROGRAM MINUS THE NUMBER OF “STUDENTS UNAVAILABLE FOR GRADUATION”, WHICH MEANS STUDENTS WHO HAVE DIED, BEEN INCARCERATED, OR CALLED TO ACTIVE MILITARY DUTY.

3“GRADUATES” IS THE NUMBER OF STUDENTS WHO COMPLETED THE PROGRAM WITHIN 100% OF THE PUBLISHED LENGTH.

4“COMPLETION RATE” IS THE NUMBER OF GRADUATES DIVIDED BY THE NUMBER OF “STUDENTS AVAILABLE FOR GRADUATION”.

5“150% GRADUATES RATE” IS THE NUMBER OF STUDENTS WHO COMPLETED THE PROGRAM WITHIN 101%-150% OF THE PUBLISHED PROGRAM RATE.

6“150% COMPLETION RATE” IS THE PERCENTAGE OF STUDENTS WHO COMPLETED THE PROGRAM IN THE REPORTED CALENDAR YEAR WITHIN 101% -150% OF THE PUBLISHED LENGTH.

| Calendar Year | # OF GRADUATES 7 | GRADUATES AVAILABLE FOR EMPLOYMENT 8 | GRADUATES EMPLOYED IN THE FIELD 9 | PLACEMENT RATE 10 | GRADUATES EMPLOYED LESS THAN 32 HOURS PER WEEK | GRADUATES EMPLOYED MORE THAN 32 HOURS PER WEEK | STUDENT'S INITIALS BELOW: |
|---------------|-------------------------|---|--|--------------------------|--|--|---------------------------|
|---------------|-------------------------|---|--|--------------------------|--|--|---------------------------|

7“# OF GRADUATES” IS THE NUMBER OF STUDENTS WHO COMPLETED THE PROGRAM WITHIN 100% OF THE PUBLISHED LENGTH.

8“GRADUATES AVAILABLE FOR EMPLOYMENT” MEANS THE NUMBER OF GRADUATES MINUS THE NUMBER OF GRADUATES UNAVAILABLE FOR EMPLOYMENT. GRADUATES UNAVAILABLE FOR EMPLOYMENT MEANS GRADUATES WHO HAVE DIED, BECOME INCARCERATED, ARE CALLED TO ACTIVE MILITARY DUTY, OR ARE INTERNATIONAL STUDENTS WHO DO NOT HAVE A VISA ALLOWING EMPLOYMENT.

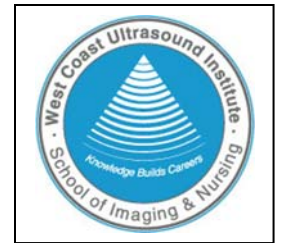
9“GRADUATES EMPLOYED IN THE FIELD” ARE GRADUATES WHO REPORT THAT THEY ARE EMPLOYED WITHIN SIX MONTHS OF GRADUATION IN A POSITION REQUIRING THE SKILLS THEY OBTAINED THROUGH THE EDUCATION PROVIDED BY THE SCHOOL.

10“PLACEMENT RATE” IS THE NUMBER OF EMPLOYED GRADUATES DIVIDED BY THE “GRADUATES AVAILABLE FOR EMPLOYMENT”.

| Annual Salary and Wage Reported for Graduates Employed in the Field | BELOW \$30,000 | \$30,000 TO 34,999 | \$35,000 TO 39,999 | \$40,000 TO 44,999 | \$45,000 TO 49,999 | \$50,000 TO 54,999 | \$55,000 TO 59,999 | ABOVE \$60,000 |
|---|----------------|--------------------|--------------------|--------------------|--------------------|--------------------|--------------------|----------------|
|---|----------------|--------------------|--------------------|--------------------|--------------------|--------------------|--------------------|----------------|

“Annual Salaries of the Placement Rate Cohorts” ARE THE ANNUAL SALARIES IN INCREMENTS OF \$5000.00 REPORTED BY THE GRADUATES WHO ARE EMPLOYED WITHIN SIX MONTHS OF GRADUATION IN A POSITION REQUIRING THE SKILLS THEY OBTAINED THROUGH THE EDUCATION PROVIDED BY THE SCHOOL

WEST COAST ULTRASOUND INSTITUTE
 BEVERLY HILLS CAMPUS
 SCHOOL PERFORMANCE FACT SHEET
 2014-15 ACADEMIC YEAR



**PEDIATRIC CARDIAC ULTRASOUND AND CONGENITAL HEART DISEASE
 NINE MONTH DIPLOMA PROGRAM**

The following charts represent the completion, placement and salary information for our students from the two (2) most recent completed academic years. We are required by the Bureau for Private Postsecondary Education to disclose this information to you prior to accepting your enrollment into West Coast Ultrasound Institute. Please review the information carefully for your chosen program of study. Upon satisfactory examination of your program data, and prior to signing your enrollment agreement, you must initial your understanding and acceptance

| Calendar Year | # OF STUDENTS WHO BEGAN PROGRAM ¹ | STUDENTS AVAILABLE FOR GRADUATION ² | GRADUATES ³ | COMPLETION RATE ⁴ | 150% GRADUATES ⁵ | 150% COMPLETION RATE ⁶ | STUDENT'S INITIALS BELOW: |
|---------------|--|--|------------------------|------------------------------|-----------------------------|-----------------------------------|---------------------------|
| 2012 | 0 | 0 | 0 | 0 | 0 | 0 | |
| 2013 | 6 | 6 | 6 | 100% | 0 | 0 | |

| Calendar Year | # OF GRADUATES ⁷ | GRADUATES AVAILABLE FOR EMPLOYMENT ⁸ | GRADUATES EMPLOYED IN THE FIELD ⁹ | PLACEMENT RATE ¹⁰ | GRADUATES EMPLOYED LESS THAN 32 HOURS PER WEEK | GRADUATES EMPLOYED MORE THAN 32 HOURS PER WEEK | STUDENT'S INITIALS BELOW: |
|---------------|-----------------------------|---|--|------------------------------|--|--|---------------------------|
| 2012 | 0 | 0 | 0 | 0 | 0 | 0 | |
| 2013 | 6 | 4 | 4 | 100% | 0 | 4 | |

| | | ANNUAL SALARY AND WAGE REPORTED FOR GRADUATES EMPLOYED IN THE FIELD | | | | | | | | | |
|------|---|---|----------------|--------------------|--------------------|--------------------|--------------------|--------------------|----------------|-------------------------------|--------------------------|
| Year | GRADUATES AVAILABLE FOR EMPLOYMENT ⁸ | GRADUATES EMPLOYED IN THE FIELD ⁹ | BELOW \$30,000 | \$30,000 TO 34,999 | \$35,000 TO 39,999 | \$40,000 TO 44,999 | \$45,000 TO 49,999 | \$50,000 TO 54,999 | ABOVE \$55,000 | STUDENTS NOT REPORTING SALARY | STUDENT'S INITIALS BELOW |
| 2012 | 0 | 0 | 0 | 0 | 0 | 0 | 0 | 0 | 0 | 0 | |
| 2013 | 0 | 0 | 0 | 1 | 0 | 0 | 0 | 1 | 2 | 0 | |

| 3 YEAR COHORT DEFAULT RATE PUBLISHED BY USDE: | % OF ENROLLED STUDENTS RECEIVING FEDERAL STUDENT LOANS: |
|---|---|
| 8.9% | 82% |

This fact sheet is filed with the Bureau for Private Postsecondary Education. Regardless of any information you may have relating to completion rates, placement rates, starting rates, starting salaries, or license exam passage rates, this fact sheet contains the information as calculated pursuant to state Law.

Information regarding a list of employment positions that have been determined to be within the field of training for this program can be obtained along with a list of objective sources supporting salaries claims for this program, by visiting the Career Services Department.

Any questions a student may have regarding this fact sheet that have not been satisfactory answered by the institution may be directed to the Bureau for Private Postsecondary Education at 2535 Capital Oaks Drive, Suite 400, t Sacramento, Ca 95833, www.bppe.ca.gov, (916) 431-6959 telephone, (916) 263-1897 fax.

I certify that I have received the School Performance Fact Sheet, and information regarding completions rates, and salary or wage information included in the School Performance Fact Sheet

 Student Signature

 Date

 Print Name

SCHOOL PERFORMANCE FACT SHEET DEFINITIONS:

| Calendar Year | # OF STUDENTS WHO BEGAN PROGRAM 1 | STUDENTS AVAILABLE FOR GRADUATION 2 | GRADUATES 3 | COMPLETION RATE 4 | 150% GRADUATES RATE 5 | 150% COMPLETION RATE 6 | STUDENT'S INITIALS BELOW: |
|---------------|--|--|--------------------|--------------------------|------------------------------|-------------------------------|---------------------------|
|---------------|--|--|--------------------|--------------------------|------------------------------|-------------------------------|---------------------------|

1“NUMBER OF STUDENTS WHO BEGAN PROGRAM” IS THE NUMBER OF STUDENTS WHO BEGAN WHO ARE SCHEDULED TO COMPLETE THE PROGRAM WITHIN THE REPORTING CALENDAR YEAR.

2 “STUDENTS AVAILABLE FOR GRADUATION” IS THE NUMBER OF STUDENTS WHO BEGAN THE PROGRAM MINUS THE NUMBER OF “STUDENTS UNAVAILABLE FOR GRADUATION”, WHICH MEANS STUDENTS WHO HAVE DIED, BEEN INCARCERATED, OR CALLED TO ACTIVE MILITARY DUTY.

3“GRADUATES” IS THE NUMBER OF STUDENTS WHO COMPLETED THE PROGRAM WITHIN 100% OF THE PUBLISHED LENGTH.

4“COMPLETION RATE” IS THE NUMBER OF GRADUATES DIVIDED BY THE NUMBER OF “STUDENTS AVAILABLE FOR GRADUATION”.

5“150% GRADUATES RATE” IS THE NUMBER OF STUDENTS WHO COMPLETED THE PROGRAM WITHIN 101%-150% OF THE PUBLISHED PROGRAM RATE.

6“150% COMPLETION RATE” IS THE PERCENTAGE OF STUDENTS WHO COMPLETED THE PROGRAM IN THE REPORTED CALENDAR YEAR WITHIN 101% -150% OF THE PUBLISHED LENGTH.

| Calendar Year | # OF GRADUATES 7 | GRADUATES AVAILABLE FOR EMPLOYMENT 8 | GRADUATES EMPLOYED IN THE FIELD 9 | PLACEMENT RATE 10 | GRADUATES EMPLOYED LESS THAN 32 HOURS PER WEEK | GRADUATES EMPLOYED MORE THAN 32 HOURS PER WEEK | STUDENT'S INITIALS BELOW: |
|---------------|-------------------------|---|--|--------------------------|--|--|---------------------------|
|---------------|-------------------------|---|--|--------------------------|--|--|---------------------------|

7“# OF GRADUATES” IS THE NUMBER OF STUDENTS WHO COMPLETED THE PROGRAM WITHIN 100% OF THE PUBLISHED LENGTH.

8“GRADUATES AVAILABLE FOR EMPLOYMENT” MEANS THE NUMBER OF GRADUATES MINUS THE NUMBER OF GRADUATES UNAVAILABLE FOR EMPLOYMENT. GRADUATES UNAVAILABLE FOR EMPLOYMENT MEANS GRADUATES WHO HAVE DIED, BECOME INCARCERATED, ARE CALLED TO ACTIVE MILITARY DUTY, OR ARE INTERNATIONAL STUDENTS WHO DO NOT HAVE A VISA ALLOWING EMPLOYMENT.

9“GRADUATES EMPLOYED IN THE FIELD” ARE GRADUATES WHO REPORT THAT THEY ARE EMPLOYED WITHIN SIX MONTHS OF GRADUATION IN A POSITION REQUIRING THE SKILLS THEY OBTAINED THROUGH THE EDUCATION PROVIDED BY THE SCHOOL.

10“PLACEMENT RATE” IS THE NUMBER OF EMPLOYED GRADUATES DIVIDED BY THE “GRADUATES AVAILABLE FOR EMPLOYMENT”.

| Annual Salary and Wage Reported for Graduates Employed in the Field | BELOW \$30,000 | \$30,000 TO 34,999 | \$35,000 TO 39,999 | \$40,000 TO 44,999 | \$45,000 TO 49,999 | \$50,000 TO 54,999 | \$55,000 TO 59,999 | ABOVE \$60,000 |
|---|----------------|--------------------|--------------------|--------------------|--------------------|--------------------|--------------------|----------------|
|---|----------------|--------------------|--------------------|--------------------|--------------------|--------------------|--------------------|----------------|

“Annual Salaries of the Placement Rate Cohorts” ARE THE ANNUAL SALARIES IN INCREMENTS OF \$5000.00 REPORTED BY THE GRADUATES WHO ARE EMPLOYED WITHIN SIX MONTHS OF GRADUATION IN A POSITION REQUIRING THE SKILLS THEY OBTAINED THROUGH THE EDUCATION PROVIDED BY THE SCHOOL

WEST COAST ULTRASOUND INSTITUTE
 ONTARIO BRANCH CAMPUS
 SCHOOL PERFORMANCE FACT SHEET
 2014-15 ACADEMIC YEAR



**PEDIATRIC CARDIAC ULTRASOUND AND CONGENITAL HEART DISEASE
 NINE MONTH DIPLOMA PROGRAM**

The following charts represent the completion, placement and salary information for our students from the two (2) most recent completed academic years. We are required by the Bureau for Private Postsecondary Education to disclose this information to you prior to accepting your enrollment into West Coast Ultrasound Institute. Please review the information carefully for your chosen program of study. Upon satisfactory examination of your program data, and prior to signing your enrollment agreement, you must initial your understanding and acceptance

| Calendar Year | # OF STUDENTS WHO BEGAN PROGRAM ¹ | STUDENTS AVAILABLE FOR GRADUATION ² | GRADUATES ³ | COMPLETION RATE ⁴ | 150% GRADUATES ⁵ | 150% COMPLETION RATE ⁶ | STUDENT'S INITIALS BELOW: |
|---------------|--|--|------------------------|------------------------------|-----------------------------|-----------------------------------|---------------------------|
| 2012 | 8 | 8 | 8 | 100% | 0 | 0 | |
| 2013 | 0 | 0 | 0 | 0 | 0 | 0 | |

| Calendar Year | # OF GRADUATES ⁷ | GRADUATES AVAILABLE FOR EMPLOYMENT ⁸ | GRADUATES EMPLOYED IN THE FIELD ⁹ | PLACEMENT RATE ¹⁰ | GRADUATES EMPLOYED LESS THAN 32 HOURS PER WEEK | GRADUATES EMPLOYED MORE THAN 32 HOURS PER WEEK | STUDENT'S INITIALS BELOW: |
|---------------|-----------------------------|---|--|------------------------------|--|--|---------------------------|
| 2012 | 8 | 8 | 8 | 100% | 0 | 8 | |
| 2013 | 0 | 0 | 0 | 0 | 0 | 0 | |

| ANNUAL SALARY AND WAGE REPORTED FOR GRADUATES EMPLOYED IN THE FIELD | | | | | | | | | | | |
|---|---|--|----------------|--------------------|--------------------|--------------------|--------------------|--------------------|--------------------|-------------------------------|--------------------------|
| Year | GRADUATES AVAILABLE FOR EMPLOYMENT ⁸ | GRADUATES EMPLOYED IN THE FIELD ⁹ | BELOW \$30,000 | \$30,000 TO 34,999 | \$35,000 TO 39,999 | \$40,000 TO 44,999 | \$45,000 TO 49,999 | \$50,000 TO 54,999 | \$55,000 TO 59,999 | STUDENTS NOT REPORTING SALARY | STUDENT'S INITIALS BELOW |
| 2012 | 8 | 8 | 0 | 0 | 0 | 0 | 0 | 1 | 7 | 0 | |
| 2013 | 0 | 0 | 0 | 0 | 0 | 0 | 0 | 0 | 0 | 0 | |

| | |
|--|--|
| 3 YEAR COHORT DEFAULT RATE PUBLISHED BY USDE: | % OF ENROLLED STUDENTS RECEIVING FEDERAL STUDENT LOANS: |
| 8.9% | 82% |

This fact sheet is filed with the Bureau for Private Postsecondary Education. Regardless of any information you may have relating to completion rates, placement rates, starting rates, starting salaries, or license exam passage rates, this fact sheet contains the information as calculated pursuant to state Law.

Information regarding a list of employment positions that have been determined to be within the field of training for this program can be obtained along with a list of objective sources supporting salaries claims for this program, by visiting the Career Services Department.

Any questions a student may have regarding this fact sheet that have not been satisfactory answered by the institution may be directed to the Bureau for Private Postsecondary Education at 2535 Capital Oaks Drive, Suite 400, t Sacramento, Ca 95833, www.bppe.ca.gov, (916) 431-6959 telephone, (916) 263-1897 fax.

I certify that I have received the School Performance Fact Sheet, and information regarding completions rates, and salary or wage information included in the School Performance Fact Sheet

 Student Signature

 Date

 Print Name

SCHOOL PERFORMANCE FACT SHEET DEFINITIONS:

| Calendar Year | # OF STUDENTS WHO BEGAN PROGRAM 1 | STUDENTS AVAILABLE FOR GRADUATION 2 | GRADUATES 3 | COMPLETION RATE 4 | 150% GRADUATES RATE 5 | 150% COMPLETION RATE 6 | STUDENT'S INITIALS BELOW: |
|---------------|--|--|--------------------|--------------------------|------------------------------|-------------------------------|---------------------------|
|---------------|--|--|--------------------|--------------------------|------------------------------|-------------------------------|---------------------------|

1“NUMBER OF STUDENTS WHO BEGAN PROGRAM” IS THE NUMBER OF STUDENTS WHO BEGAN WHO ARE SCHEDULED TO COMPLETE THE PROGRAM WITHIN THE REPORTING CALENDAR YEAR.

2 “STUDENTS AVAILABLE FOR GRADUATION” IS THE NUMBER OF STUDENTS WHO BEGAN THE PROGRAM MINUS THE NUMBER OF “STUDENTS UNAVAILABLE FOR GRADUATION”, WHICH MEANS STUDENTS WHO HAVE DIED, BEEN INCARCERATED, OR CALLED TO ACTIVE MILITARY DUTY.

3“GRADUATES” IS THE NUMBER OF STUDENTS WHO COMPLETED THE PROGRAM WITHIN 100% OF THE PUBLISHED LENGTH.

4“COMPLETION RATE” IS THE NUMBER OF GRADUATES DIVIDED BY THE NUMBER OF “STUDENTS AVAILABLE FOR GRADUATION”.

5“150% GRADUATES RATE” IS THE NUMBER OF STUDENTS WHO COMPLETED THE PROGRAM WITHIN 101%-150% OF THE PUBLISHED PROGRAM RATE.

6“150% COMPLETION RATE” IS THE PERCENTAGE OF STUDENTS WHO COMPLETED THE PROGRAM IN THE REPORTED CALENDAR YEAR WITHIN 101% -150% OF THE PUBLISHED LENGTH.

| Calendar Year | # OF GRADUATES 7 | GRADUATES AVAILABLE FOR EMPLOYMENT 8 | GRADUATES EMPLOYED IN THE FIELD 9 | PLACEMENT RATE 10 | GRADUATES EMPLOYED LESS THAN 32 HOURS PER WEEK | GRADUATES EMPLOYED MORE THAN 32 HOURS PER WEEK | STUDENT'S INITIALS BELOW: |
|---------------|-------------------------|---|--|--------------------------|--|--|---------------------------|
|---------------|-------------------------|---|--|--------------------------|--|--|---------------------------|

7“# OF GRADUATES” IS THE NUMBER OF STUDENTS WHO COMPLETED THE PROGRAM WITHIN 100% OF THE PUBLISHED LENGTH.

8“GRADUATES AVAILABLE FOR EMPLOYMENT” MEANS THE NUMBER OF GRADUATES MINUS THE NUMBER OF GRADUATES UNAVAILABLE FOR EMPLOYMENT. GRADUATES UNAVAILABLE FOR EMPLOYMENT MEANS GRADUATES WHO HAVE DIED, BECOME INCARCERATED, ARE CALLED TO ACTIVE MILITARY DUTY, OR ARE INTERNATIONAL STUDENTS WHO DO NOT HAVE A VISA ALLOWING EMPLOYMENT.

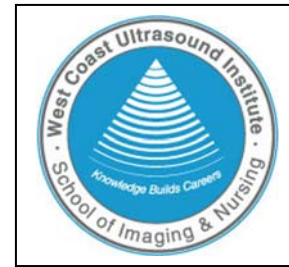
9“GRADUATES EMPLOYED IN THE FIELD” ARE GRADUATES WHO REPORT THAT THEY ARE EMPLOYED WITHIN SIX MONTHS OF GRADUATION IN A POSITION REQUIRING THE SKILLS THEY OBTAINED THROUGH THE EDUCATION PROVIDED BY THE SCHOOL.

10“PLACEMENT RATE” IS THE NUMBER OF EMPLOYED GRADUATES DIVIDED BY THE “GRADUATES AVAILABLE FOR EMPLOYMENT”.

| Annual Salary and Wage Reported for Graduates Employed in the Field | BELOW \$30,000 | \$30,000 TO 34,999 | \$35,000 TO 39,999 | \$40,000 TO 44,999 | \$45,000 TO 49,999 | \$50,000 TO 54,999 | \$55,000 TO 59,999 | ABOVE \$60,000 |
|---|----------------|--------------------|--------------------|--------------------|--------------------|--------------------|--------------------|----------------|
|---|----------------|--------------------|--------------------|--------------------|--------------------|--------------------|--------------------|----------------|

“Annual Salaries of the Placement Rate Cohorts” ARE THE ANNUAL SALARIES IN INCREMENTS OF \$5000.00 REPORTED BY THE GRADUATES WHO ARE EMPLOYED WITHIN SIX MONTHS OF GRADUATION IN A POSITION REQUIRING THE SKILLS THEY OBTAINED THROUGH THE EDUCATION PROVIDED BY THE SCHOOL

WEST COAST ULTRASOUND INSTITUTE
 BEVERLY HILLS CAMPUS
 SCHOOL PERFORMANCE FACT SHEET
 2014-15 ACADEMIC YEAR



**MEDICAL ASSISTANT
 NINE MONTH DIPLOMA PROGRAM**

The following charts represent the completion, placement and salary information for our students from the two (2) most recent completed academic years. We are required by the Bureau for Private Postsecondary Education to disclose this information to you prior to accepting your enrollment into West Coast Ultrasound Institute. Please review the information carefully for your chosen program of study. Upon satisfactory examination of your program data, and prior to signing your enrollment agreement, you must initial your understanding and acceptance

| Calendar Year | # OF STUDENTS WHO BEGAN PROGRAM ¹ | STUDENTS AVAILABLE FOR GRADUATION ² | GRADUATES ³ | COMPLETION RATE ⁴ | 150% GRADUATES ⁵ | 150% COMPLETION RATE ⁶ | STUDENT'S INITIALS BELOW: |
|---------------|--|--|------------------------|------------------------------|-----------------------------|-----------------------------------|---------------------------|
| 2012 | 0 | 0 | 0 | 0 | 0 | 0 | |
| 2013 | 0 | 0 | 0 | 0 | 0 | 0 | |

| Calendar Year | # OF GRADUATES ⁷ | GRADUATES AVAILABLE FOR EMPLOYMENT ⁸ | GRADUATES EMPLOYED IN THE FIELD ⁹ | PLACEMENT RATE ¹⁰ | GRADUATES EMPLOYED LESS THAN 32 HOURS PER WEEK | GRADUATES EMPLOYED MORE THAN 32 HOURS PER WEEK | STUDENT'S INITIALS BELOW: |
|---------------|-----------------------------|---|--|------------------------------|--|--|---------------------------|
| 2012 | 0 | 0 | 0 | 0 | 0 | 0 | |
| 2013 | 0 | 0 | 0 | 0 | 0 | 0 | |

| ANNUAL SALARY AND WAGE REPORTED FOR GRADUATES EMPLOYED IN THE FIELD | | | | | | | | | | | |
|---|---|--|----------------|--------------------|--------------------|--------------------|--------------------|--------------------|----------------|-------------------------------|--------------------------|
| Year | GRADUATES AVAILABLE FOR EMPLOYMENT ⁸ | GRADUATES EMPLOYED IN THE FIELD ⁹ | BELOW \$30,000 | \$30,000 TO 34,999 | \$35,000 TO 39,999 | \$40,000 TO 44,999 | \$45,000 TO 49,999 | \$50,000 TO 54,999 | ABOVE \$55,000 | STUDENTS NOT REPORTING SALARY | STUDENT'S INITIALS BELOW |
| 2012 | 0 | 0 | 0 | 0 | 0 | 0 | 0 | 0 | 0 | 0 | |
| 2013 | 0 | 0 | 0 | 0 | 0 | 0 | 0 | 0 | 0 | 0 | |

| 3 YEAR COHORT DEFAULT RATE PUBLISHED BY USDE: | % OF ENROLLED STUDENTS RECEIVING FEDERAL STUDENT LOANS: |
|---|---|
| 8.9% | 82% |

This fact sheet is filed with the Bureau for Private Postsecondary Education. Regardless of any information you may have relating to completion rates, placement rates, starting rates, starting salaries, or license exam passage rates, this fact sheet contains the information as calculated pursuant to state Law.

Information regarding a list of employment positions that have been determined to be within the field of training for this program can be obtained along with a list of objective sources supporting salaries claims for this program, by visiting the Career Services Department.

Any questions a student may have regarding this fact sheet that have not been satisfactory answered by the institution may be directed to the Bureau for Private Postsecondary Education at 2535 Capital Oaks Drive, Suite 400, t Sacramento, Ca 95833, www.bppe.ca.gov, (916) 431-6959 telephone, (916) 263-1897 fax.

I certify that I have received the School Performance Fact Sheet, and information regarding completions rates, and salary or wage information included in the School Performance Fact Sheet

 Student Signature

 Date

 Print Name

SCHOOL PERFORMANCE FACT SHEET DEFINITIONS:

| Calendar Year | # OF STUDENTS WHO BEGAN PROGRAM 1 | STUDENTS AVAILABLE FOR GRADUATION 2 | GRADUATES 3 | COMPLETION RATE 4 | 150% GRADUATES RATE 5 | 150% COMPLETION RATE 6 | STUDENT'S INITIALS BELOW: |
|---------------|--|--|--------------------|--------------------------|------------------------------|-------------------------------|---------------------------|
|---------------|--|--|--------------------|--------------------------|------------------------------|-------------------------------|---------------------------|

1“NUMBER OF STUDENTS WHO BEGAN PROGRAM” IS THE NUMBER OF STUDENTS WHO BEGAN WHO ARE SCHEDULED TO COMPLETE THE PROGRAM WITHIN THE REPORTING CALENDAR YEAR.

2 “STUDENTS AVAILABLE FOR GRADUATION” IS THE NUMBER OF STUDENTS WHO BEGAN THE PROGRAM MINUS THE NUMBER OF “STUDENTS UNAVAILABLE FOR GRADUATION”, WHICH MEANS STUDENTS WHO HAVE DIED, BEEN INCARCERATED, OR CALLED TO ACTIVE MILITARY DUTY.

3“GRADUATES” IS THE NUMBER OF STUDENTS WHO COMPLETED THE PROGRAM WITHIN 100% OF THE PUBLISHED LENGTH.

4“COMPLETION RATE” IS THE NUMBER OF GRADUATES DIVIDED BY THE NUMBER OF “STUDENTS AVAILABLE FOR GRADUATION”.

5“150% GRADUATES RATE” IS THE NUMBER OF STUDENTS WHO COMPLETED THE PROGRAM WITHIN 101%-150% OF THE PUBLISHED PROGRAM RATE.

6“150% COMPLETION RATE” IS THE PERCENTAGE OF STUDENTS WHO COMPLETED THE PROGRAM IN THE REPORTED CALENDAR YEAR WITHIN 101% -150% OF THE PUBLISHED LENGTH.

| Calendar Year | # OF GRADUATES 7 | GRADUATES AVAILABLE FOR EMPLOYMENT 8 | GRADUATES EMPLOYED IN THE FIELD 9 | PLACEMENT RATE 10 | GRADUATES EMPLOYED LESS THAN 32 HOURS PER WEEK | GRADUATES EMPLOYED MORE THAN 32 HOURS PER WEEK | STUDENT'S INITIALS BELOW: |
|---------------|-------------------------|---|--|--------------------------|--|--|---------------------------|
|---------------|-------------------------|---|--|--------------------------|--|--|---------------------------|

7“# OF GRADUATES” IS THE NUMBER OF STUDENTS WHO COMPLETED THE PROGRAM WITHIN 100% OF THE PUBLISHED LENGTH.

8“GRADUATES AVAILABLE FOR EMPLOYMENT” MEANS THE NUMBER OF GRADUATES MINUS THE NUMBER OF GRADUATES UNAVAILABLE FOR EMPLOYMENT. GRADUATES UNAVAILABLE FOR EMPLOYMENT MEANS GRADUATES WHO HAVE DIED, BECOME INCARCERATED, ARE CALLED TO ACTIVE MILITARY DUTY, OR ARE INTERNATIONAL STUDENTS WHO DO NOT HAVE A VISA ALLOWING EMPLOYMENT.

9“GRADUATES EMPLOYED IN THE FIELD” ARE GRADUATES WHO REPORT THAT THEY ARE EMPLOYED WITHIN SIX MONTHS OF GRADUATION IN A POSITION REQUIRING THE SKILLS THEY OBTAINED THROUGH THE EDUCATION PROVIDED BY THE SCHOOL.

10“PLACEMENT RATE” IS THE NUMBER OF EMPLOYED GRADUATES DIVIDED BY THE “GRADUATES AVAILABLE FOR EMPLOYMENT”.

| Annual Salary and Wage Reported for Graduates Employed in the Field | BELOW \$30,000 | \$30,000 TO 34,999 | \$35,000 TO 39,999 | \$40,000 TO 44,999 | \$45,000 TO 49,999 | \$50,000 TO 54,999 | \$55,000 TO 59,999 | ABOVE \$60,000 |
|---|----------------|--------------------|--------------------|--------------------|--------------------|--------------------|--------------------|----------------|
|---|----------------|--------------------|--------------------|--------------------|--------------------|--------------------|--------------------|----------------|

“Annual Salaries of the Placement Rate Cohorts” ARE THE ANNUAL SALARIES IN INCREMENTS OF \$5000.00 REPORTED BY THE GRADUATES WHO ARE EMPLOYED WITHIN SIX MONTHS OF GRADUATION IN A POSITION REQUIRING THE SKILLS THEY OBTAINED THROUGH THE EDUCATION PROVIDED BY THE SCHOOL

WEST COAST ULTRASOUND INSTITUTE
 ONTARIO BRANCH CAMPUS
 SCHOOL PERFORMANCE FACT SHEET
 2014-15 ACADEMIC YEAR



**MEDICAL ASSISTANT
 NINE MONTH DIPLOMA PROGRAM**

The following charts represent the completion, placement and salary information for our students from the two (2) most recent completed academic years. We are required by the Bureau for Private Postsecondary Education to disclose this information to you prior to accepting your enrollment into West Coast Ultrasound Institute. Please review the information carefully for your chosen program of study. Upon satisfactory examination of your program data, and prior to signing your enrollment agreement, you must initial your understanding and acceptance

| Calendar Year | # OF STUDENTS WHO BEGAN PROGRAM ¹ | STUDENTS AVAILABLE FOR GRADUATION ² | GRADUATES ³ | COMPLETION RATE ⁴ | 150% GRADUATES ⁵ | 150% COMPLETION RATE ⁶ | STUDENT'S INITIALS BELOW: |
|---------------|--|--|------------------------|------------------------------|-----------------------------|-----------------------------------|---------------------------|
| 2012 | 0 | 0 | 0 | 0 | 0 | 0 | |
| 2013 | 0 | 0 | 0 | 0 | 0 | 0 | |

| Calendar Year | # OF GRADUATES ⁷ | GRADUATES AVAILABLE FOR EMPLOYMENT ⁸ | GRADUATES EMPLOYED IN THE FIELD ⁹ | PLACEMENT RATE ¹⁰ | GRADUATES EMPLOYED LESS THAN 32 HOURS PER WEEK | GRADUATES EMPLOYED MORE THAN 32 HOURS PER WEEK | STUDENT'S INITIALS BELOW: |
|---------------|-----------------------------|---|--|------------------------------|--|--|---------------------------|
| 2012 | 0 | 0 | 0 | 0 | 0 | 0 | |
| 2013 | 0 | 0 | 0 | 0 | 0 | 0 | |

| ANNUAL SALARY AND WAGE REPORTED FOR GRADUATES EMPLOYED IN THE FIELD | | | | | | | | | | | |
|---|---|--|----------------|--------------------|--------------------|--------------------|--------------------|--------------------|----------------|-------------------------------|--------------------------|
| Year | GRADUATES AVAILABLE FOR EMPLOYMENT ⁸ | GRADUATES EMPLOYED IN THE FIELD ⁹ | BELOW \$30,000 | \$30,000 TO 34,999 | \$35,000 TO 39,999 | \$40,000 TO 44,999 | \$45,000 TO 49,999 | \$50,000 TO 54,999 | ABOVE \$55,000 | STUDENTS NOT REPORTING SALARY | STUDENT'S INITIALS BELOW |
| 2012 | 0 | 0 | 0 | 0 | 0 | 0 | 0 | 0 | 0 | 0 | |
| 2013 | 0 | 0 | 0 | 0 | 0 | 0 | 0 | 0 | 0 | 0 | |

| | |
|--|--|
| 3 YEAR COHORT DEFAULT RATE PUBLISHED BY USDE: | % OF ENROLLED STUDENTS RECEIVING FEDERAL STUDENT LOANS: |
| 8.9% | 82% |

This fact sheet is filed with the Bureau for Private Postsecondary Education. Regardless of any information you may have relating to completion rates, placement rates, starting rates, starting salaries, or license exam passage rates, this fact sheet contains the information as calculated pursuant to state Law.

Information regarding a list of employment positions that have been determined to be within the field of training for this program can be obtained along with a list of objective sources supporting salaries claims for this program, by visiting the Career Services Department.

Any questions a student may have regarding this fact sheet that have not been satisfactory answered by the institution may be directed to the Bureau for Private Postsecondary Education at 2535 Capital Oaks Drive, Suite 400, t Sacramento, Ca 95833, www.bppe.ca.gov, (916) 431-6959 telephone, (916) 263-1897 fax.

I certify that I have received the School Performance Fact Sheet, and information regarding completions rates, and salary or wage information included in the School Performance Fact Sheet

 Student Signature

 Date

 Print Name

SCHOOL PERFORMANCE FACT SHEET DEFINITIONS:

| Calendar Year | # OF STUDENTS WHO BEGAN PROGRAM 1 | STUDENTS AVAILABLE FOR GRADUATION 2 | GRADUATES 3 | COMPLETION RATE 4 | 150% GRADUATES RATE 5 | 150% COMPLETION RATE 6 | STUDENT'S INITIALS BELOW: |
|---------------|--|--|--------------------|--------------------------|------------------------------|-------------------------------|---------------------------|
|---------------|--|--|--------------------|--------------------------|------------------------------|-------------------------------|---------------------------|

1“NUMBER OF STUDENTS WHO BEGAN PROGRAM” IS THE NUMBER OF STUDENTS WHO BEGAN WHO ARE SCHEDULED TO COMPLETE THE PROGRAM WITHIN THE REPORTING CALENDAR YEAR.

2 “STUDENTS AVAILABLE FOR GRADUATION” IS THE NUMBER OF STUDENTS WHO BEGAN THE PROGRAM MINUS THE NUMBER OF “STUDENTS UNAVAILABLE FOR GRADUATION”, WHICH MEANS STUDENTS WHO HAVE DIED, BEEN INCARCERATED, OR CALLED TO ACTIVE MILITARY DUTY.

3“GRADUATES” IS THE NUMBER OF STUDENTS WHO COMPLETED THE PROGRAM WITHIN 100% OF THE PUBLISHED LENGTH.

4“COMPLETION RATE” IS THE NUMBER OF GRADUATES DIVIDED BY THE NUMBER OF “STUDENTS AVAILABLE FOR GRADUATION”.

5“150% GRADUATES RATE” IS THE NUMBER OF STUDENTS WHO COMPLETED THE PROGRAM WITHIN 101%-150% OF THE PUBLISHED PROGRAM RATE.

6“150% COMPLETION RATE” IS THE PERCENTAGE OF STUDENTS WHO COMPLETED THE PROGRAM IN THE REPORTED CALENDAR YEAR WITHIN 101% -150% OF THE PUBLISHED LENGTH.

| Calendar Year | # OF GRADUATES 7 | GRADUATES AVAILABLE FOR EMPLOYMENT 8 | GRADUATES EMPLOYED IN THE FIELD 9 | PLACEMENT RATE 10 | GRADUATES EMPLOYED LESS THAN 32 HOURS PER WEEK | GRADUATES EMPLOYED MORE THAN 32 HOURS PER WEEK | STUDENT'S INITIALS BELOW: |
|---------------|-------------------------|---|--|--------------------------|--|--|---------------------------|
|---------------|-------------------------|---|--|--------------------------|--|--|---------------------------|

7“# OF GRADUATES” IS THE NUMBER OF STUDENTS WHO COMPLETED THE PROGRAM WITHIN 100% OF THE PUBLISHED LENGTH.

8“GRADUATES AVAILABLE FOR EMPLOYMENT” MEANS THE NUMBER OF GRADUATES MINUS THE NUMBER OF GRADUATES UNAVAILABLE FOR EMPLOYMENT. GRADUATES UNAVAILABLE FOR EMPLOYMENT MEANS GRADUATES WHO HAVE DIED, BECOME INCARCERATED, ARE CALLED TO ACTIVE MILITARY DUTY, OR ARE INTERNATIONAL STUDENTS WHO DO NOT HAVE A VISA ALLOWING EMPLOYMENT.

9“GRADUATES EMPLOYED IN THE FIELD” ARE GRADUATES WHO REPORT THAT THEY ARE EMPLOYED WITHIN SIX MONTHS OF GRADUATION IN A POSITION REQUIRING THE SKILLS THEY OBTAINED THROUGH THE EDUCATION PROVIDED BY THE SCHOOL.

10“PLACEMENT RATE” IS THE NUMBER OF EMPLOYED GRADUATES DIVIDED BY THE “GRADUATES AVAILABLE FOR EMPLOYMENT”.

| Annual Salary and Wage Reported for Graduates Employed in the Field | BELOW \$30,000 | \$30,000 TO 34,999 | \$35,000 TO 39,999 | \$40,000 TO 44,999 | \$45,000 TO 49,999 | \$50,000 TO 54,999 | \$55,000 TO 59,999 | ABOVE \$60,000 |
|---|----------------|--------------------|--------------------|--------------------|--------------------|--------------------|--------------------|----------------|
|---|----------------|--------------------|--------------------|--------------------|--------------------|--------------------|--------------------|----------------|

“Annual Salaries of the Placement Rate Cohorts” ARE THE ANNUAL SALARIES IN INCREMENTS OF \$5000.00 REPORTED BY THE GRADUATES WHO ARE EMPLOYED WITHIN SIX MONTHS OF GRADUATION IN A POSITION REQUIRING THE SKILLS THEY OBTAINED THROUGH THE EDUCATION PROVIDED BY THE SCHOOL

WEST COAST ULTRASOUND INSTITUTE
 BEVERLY HILLS CAMPUS
 SCHOOL PERFORMANCE FACT SHEET
 2014-15 ACADEMIC YEAR



VOCATIONAL NURSING
FIFTEEN MONTH DIPLOMA PROGRAM-LICENSURE REQUIRED FOR EMPLOYMENT

The following charts represent the completion, placement and salary information for our students from the two (2) most recently completed academic years. We are required by the Bureau for Private Postsecondary Education to disclose this information to you prior to accepting your enrollment into West Coast Ultrasound Institute. Please review the information carefully for your chosen program of study. Upon satisfactory examination of your program data, you must initial your understanding and acceptance.

| Calendar Year | # OF STUDENTS WHO BEGAN PROGRAM ¹ | STUDENTS AVAILABLE FOR GRADUATION ² | GRADUATES ³ | COMPLETION RATE ⁴ | 150% GRADUATES ⁵ | 150% COMPLETION RATE ⁶ | STUDENT'S INITIALS BELOW: |
|---------------|--|--|------------------------|------------------------------|-----------------------------|-----------------------------------|---------------------------|
| 2012 | 30 | 29 | 16 | 55% | 0 | 0 | |
| 2013 | 41 | 41 | 11 | 27% | 16 | 39% | |

| Calendar Year | # OF GRADUATES ⁷ | GRADUATES AVAILABLE FOR EMPLOYMENT ⁸ | GRADUATES EMPLOYED IN THE FIELD ⁹ | PLACEMENT RATE ¹⁰ | GRADUATES EMPLOYED LESS THAN 32 HOURS PER WEEK | GRADUATES EMPLOYED MORE THAN 32 HOURS PER WEEK | STUDENT'S INITIALS BELOW: |
|---------------|-----------------------------|---|--|------------------------------|--|--|---------------------------|
| 2012 | 16 | 16 | 10 | 63% | 4 | 6 | |
| 2013 | 11 | 11 | 7 | 64% | 3 | 4 | |

| Calendar Year | # OF STUDENTS TAKING THE NCLEX | # OF STUDENTS PASSING THE NCLEX | # OF STUDENTS FAILING THE NCLEX | NCLEX PASSAGE RATE | STUDENT'S INITIALS BELOW: |
|---------------|--------------------------------|---------------------------------|---------------------------------|--------------------|---------------------------|
| 2012 | 14 | 10 | 4 | 71% | |
| 2013 | 11 | 9 | 2 | 82% | |

ANNUAL SALARY AND WAGE REPORTED FOR GRADUATES EMPLOYED IN THE FIELD

| Year | GRADUATES AVAILABLE FOR EMPLOYMENT ⁸ | GRADUATES EMPLOYED IN THE FIELD ⁹ | BELOW \$30,000 | \$30,000 TO 34,999 | \$35,000 TO 39,999 | \$40,000 TO 44,999 | \$45,000 TO 49,999 | \$50,000 TO 54,999 | ABOVE \$55,000 | STUDENTS NOT REPORTING SALARY | STUDENT'S INITIALS BELOW |
|------|---|--|----------------|--------------------|--------------------|--------------------|--------------------|--------------------|----------------|-------------------------------|--------------------------|
| 2012 | 16 | 10 | 4 | 2 | 0 | 1 | 1 | 0 | 2 | 0 | |
| 2013 | 11 | 7 | 5 | 1 | 1 | 0 | 0 | 0 | 0 | 0 | |

| | | | |
|--|-------------|--|------------|
| 3 YEAR COHORT DEFAULT RATE PUBLISHED BY USDE: | 8.9% | % OF ENROLLED STUDENTS RECEIVING FEDERAL STUDENT LOANS: | 82% |
|--|-------------|--|------------|

This fact sheet is filed with the Bureau for Private Postsecondary Education. Regardless of any information you may have relating to completion rates, placement rates, starting rates, starting salaries, or license exam passage rates, this fact sheet contains the information as calculated pursuant to state Law.

Any questions a student may have regarding this fact sheet that have not been satisfactory answered by the institution may be directed to the Bureau for Private Postsecondary Education at P.O. Box 980818 West Sacramento, Ca 95798-0818, www.bppe.ca.gov, (916) 574-7720.

I certify that I have received the School Performance Fact Sheet, and information regarding completions rates, and salary or wage information included in the School Performance Fact Sheet

 Student Signature

 Date

 Print Name

SCHOOL PERFORMANCE FACT SHEET DEFINITIONS:

| Calendar Year | # OF STUDENTS WHO BEGAN PROGRAM 1 | STUDENTS AVAILABLE FOR GRADUATION 2 | GRADUATES 3 | COMPLETION RATE 4 | 150% GRADUATES RATE 5 | 150% COMPLETION RATE 6 | STUDENT'S INITIALS BELOW: |
|---------------|--|--|--------------------|--------------------------|------------------------------|-------------------------------|---------------------------|
|---------------|--|--|--------------------|--------------------------|------------------------------|-------------------------------|---------------------------|

1“NUMBER OF STUDENTS WHO BEGAN PROGRAM” IS THE NUMBER OF STUDENTS WHO BEGAN WHO ARE SCHEDULED TO COMPLETE THE PROGRAM WITHIN THE REPORTING CALENDAR YEAR.

2“STUDENTS AVAILABLE FOR GRADUATION” IS THE NUMBER OF STUDENTS WHO BEGAN THE PROGRAM MINUS THE NUMBER OF “STUDENTS UNAVAILABLE FOR GRADUATION”, WHICH MEANS STUDENTS WHO HAVE DIED, BEEN INCARCERATED, OR CALLED TO ACTIVE MILITARY DUTY.

3“GRADUATES” IS THE NUMBER OF STUDENTS WHO COMPLETED THE PROGRAM WITHIN 100% OF THE PUBLISHED LENGTH.

4“COMPLETION RATE” IS THE NUMBER OF GRADUATES DIVIDED BY THE NUMBER OF “STUDENTS AVAILABLE FOR GRADUATION”.

5“150% GRADUATES RATE” IS THE NUMBER OF STUDENTS WHO COMPLETED THE PROGRAM WITHIN 101%-150% OF THE PUBLISHED PROGRAM RATE.

6“150% COMPLETION RATE” IS THE PERCENTAGE OF STUDENTS WHO COMPLETED THE PROGRAM IN THE REPORTED CALENDAR YEAR WITHIN 101% -150% OF THE PUBLISHED LENGTH.

| Calendar Year | # OF GRADUATES 7 | GRADUATES AVAILABLE FOR EMPLOYMENT 8 | GRADUATES EMPLOYED IN THE FIELD 9 | PLACEMENT RATE 10 | GRADUATES EMPLOYED LESS THAN 32 HOURS PER WEEK | GRADUATES EMPLOYED MORE THAN 32 HOURS PER WEEK | STUDENT'S INITIALS BELOW: |
|---------------|-------------------------|---|--|--------------------------|--|--|---------------------------|
|---------------|-------------------------|---|--|--------------------------|--|--|---------------------------|

7“# OF GRADUATES” IS THE NUMBER OF STUDENTS WHO COMPLETED THE PROGRAM WITHIN 100% OF THE PUBLISHED LENGTH.

8“GRADUATES AVAILABLE FOR EMPLOYMENT” MEANS THE NUMBER OF GRADUATES MINUS THE NUMBER OF GRADUATES UNAVAILABLE FOR EMPLOYMENT. GRADUATES UNAVAILABLE FOR EMPLOYMENT MEANS GRADUATES WHO HAVE DIED, BECOME INCARCERATED, ARE CALLED TO ACTIVE MILITARY DUTY, OR ARE INTERNATIONAL STUDENTS WHO DO NOT HAVE A VISA ALLOWING EMPLOYMENT.

9“GRADUATES EMPLOYED IN THE FIELD” ARE GRADUATES WHO REPORT THAT THEY ARE EMPLOYED WITHIN SIX MONTHS OF GRADUATION IN A POSITION REQUIRING THE SKILLS THEY OBTAINED THROUGH THE EDUCATION PROVIDED BY THE SCHOOL.

10“PLACEMENT RATE” IS THE NUMBER OF EMPLOYED GRADUATES DIVIDED BY THE “GRADUATES AVAILABLE FOR EMPLOYMENT”.

| Calendar Year | # OF STUDENTS TAKING THE NCLEX | # OF STUDENTS PASSING THE NCLEX | # OF STUDENTS FAILING THE NCLEX | NCLEX PASSAGE RATE | STUDENT'S INITIALS BELOW: |
|---------------|--------------------------------|---------------------------------|---------------------------------|--------------------|---------------------------|
|---------------|--------------------------------|---------------------------------|---------------------------------|--------------------|---------------------------|

IN ORDER TO BECOME A LICENSED VOCATIONAL NURSE IN THE STATE OF CALIFORNIA, VOCATION NURSING GRADUATES MUST PASS THE NATIONAL COUNCIL LICENSE EXAM (NCLEX). THIS CHART SHOWS THE NUMBER OF GRADUATES WHO TOOK THE EXAM IN THE REPORTING YEAR, THE NUMBER WHO PASSED THE EXAMINATION, THE PASSAGE PERCENTAGE RATE, AND THE NUMBER WHO FAILED. YOU CAN ACCESS THE NCLEX EXAM PASS RATE INFORMATION AT http://www.bvnpt.ca.gov/education/vn_stats.shtml.

| Annual Salary and Wage Reported for Graduates Employed in the Field | BELOW \$30,000 | \$30,000 TO 34,999 | \$35,000 TO 39,999 | \$40,000 TO 44,999 | \$45,000 TO 49,999 | \$50,000 TO 54,999 | \$55,000 TO 59,999 | ABOVE \$60,000 |
|---|----------------|--------------------|--------------------|--------------------|--------------------|--------------------|--------------------|----------------|
|---|----------------|--------------------|--------------------|--------------------|--------------------|--------------------|--------------------|----------------|

“Annual Salary and Wage Reported for Graduates Employed in the Field” ARE THE ANNUAL SALARIES IN INCREMENTS OF \$5000.00 REPORTED BY THE GRADUATES WHO ARE EMPLOYED WITHIN SIX MONTHS OF GRADUATION IN A POSITION REQUIRING THE SKILLS THEY OBTAINED THROUGH THE EDUCATION PROVIDED BY THE SCHOOL.

WEST COAST ULTRASOUND INSTITUTE
 ONTARIO BRANCH CAMPUS
 SCHOOL PERFORMANCE FACT SHEET
 2014-15 ACADEMIC YEAR



VOCATIONAL NURSING
FIFTEEN MONTH DIPLOMA PROGRAM-LICENSURE REQUIRED FOR EMPLOYMENT

The following charts represent the completion, placement and salary information for our students from the two (2) most recently completed academic years. We are required by the Bureau for Private Postsecondary Education to disclose this information to you prior to accepting your enrollment into West Coast Ultrasound Institute. Please review the information carefully for your chosen program of study. Upon satisfactory examination of your program data, you must initial your understanding and acceptance.

| Calendar Year | # OF STUDENTS WHO BEGAN PROGRAM ¹ | STUDENTS AVAILABLE FOR GRADUATION ² | GRADUATES ³ | COMPLETION RATE ⁴ | 150% GRADUATES ⁵ | 150% COMPLETION RATE ⁶ | STUDENT'S INITIALS BELOW: |
|---------------|--|--|------------------------|------------------------------|-----------------------------|-----------------------------------|---------------------------|
| 2012 | 52 | 52 | 26 | 50% | 0 | 0 | |
| 2013 | 56 | 56 | 16 | 29% | 14 | 25% | |

| Calendar Year | # OF GRADUATES ⁷ | GRADUATES AVAILABLE FOR EMPLOYMENT ⁸ | GRADUATES EMPLOYED IN THE FIELD ⁹ | PLACEMENT RATE ¹⁰ | GRADUATES EMPLOYED LESS THAN 32 HOURS PER WEEK | GRADUATES EMPLOYED MORE THAN 32 HOURS PER WEEK | STUDENT'S INITIALS BELOW: |
|---------------|-----------------------------|---|--|------------------------------|--|--|---------------------------|
| 2012 | 26 | 26 | 15 | 58% | 5 | 10 | |
| 2013 | 16 | 14 | 8 | 57% | 5 | 3 | |

| Calendar Year | # OF STUDENTS TAKING THE NCLEX | # OF STUDENTS PASSING THE NCLEX | # OF STUDENTS FAILING THE NCLEX | NCLEX PASSAGE RATE | STUDENT'S INITIALS BELOW: |
|---------------|--------------------------------|---------------------------------|---------------------------------|--------------------|---------------------------|
| 2012 | 20 | 15 | 5 | 75% | |
| 2013 | 14 | 9 | 5 | 64% | |

| Year | GRADUATES AVAILABLE FOR EMPLOYMENT ⁸ | GRADUATES EMPLOYED IN THE FIELD ⁹ | ANNUAL SALARY AND WAGE REPORTED FOR GRADUATES EMPLOYED IN THE FIELD | | | | | | | STUDENTS NOT REPORTING SALARY | STUDENT'S INITIALS BELOW |
|--|---|--|---|--|--------------------|--------------------|--------------------|--------------------|----------------|-------------------------------|--------------------------|
| | | | BELOW \$30,000 | \$30,000 TO 34,999 | \$35,000 TO 39,999 | \$40,000 TO 44,999 | \$45,000 TO 49,999 | \$50,000 TO 54,999 | ABOVE \$55,000 | | |
| 2012 | 26 | 15 | 10 | 1 | 3 | 1 | 0 | 0 | 0 | 0 | |
| 2013 | 14 | 8 | 5 | 0 | 2 | 0 | 0 | 1 | 0 | 0 | |
| 3 YEAR COHORT DEFAULT RATE PUBLISHED BY USDE: | | | | % OF ENROLLED STUDENTS RECEIVING FEDERAL STUDENT LOANS: | | | | | | | |
| 8.9% | | | | 82% | | | | | | | |

This fact sheet is filed with the Bureau for Private Postsecondary Education. Regardless of any information you may have relating to completion rates, placement rates, starting rates, starting salaries, or license exam passage rates, this fact sheet contains the information as calculated pursuant to state Law.

Any questions a student may have regarding this fact sheet that have not been satisfactory answered by the institution may be directed to the Bureau for Private Postsecondary Education at P.O. Box 980818 West Sacramento, Ca 95798-0818, www.bppe.ca.gov, (916) 574-7720.

I certify that I have received the School Performance Fact Sheet, and information regarding completions rates, and salary or wage information included in the School Performance Fact Sheet

 Student Signature

 Date

 Print Name

SCHOOL PERFORMANCE FACT SHEET DEFINITIONS:

| Calendar Year | # OF STUDENTS WHO BEGAN PROGRAM 1 | STUDENTS AVAILABLE FOR GRADUATION 2 | GRADUATES 3 | COMPLETION RATE 4 | 150% GRADUATES RATE 5 | 150% COMPLETION RATE 6 | STUDENT'S INITIALS BELOW: |
|---------------|--|--|--------------------|--------------------------|------------------------------|-------------------------------|---------------------------|
|---------------|--|--|--------------------|--------------------------|------------------------------|-------------------------------|---------------------------|

1“NUMBER OF STUDENTS WHO BEGAN PROGRAM” IS THE NUMBER OF STUDENTS WHO BEGAN WHO ARE SCHEDULED TO COMPLETE THE PROGRAM WITHIN THE REPORTING CALENDAR YEAR.

2“STUDENTS AVAILABLE FOR GRADUATION” IS THE NUMBER OF STUDENTS WHO BEGAN THE PROGRAM MINUS THE NUMBER OF “STUDENTS UNAVAILABLE FOR GRADUATION”, WHICH MEANS STUDENTS WHO HAVE DIED, BEEN INCARCERATED, OR CALLED TO ACTIVE MILITARY DUTY.

3“GRADUATES” IS THE NUMBER OF STUDENTS WHO COMPLETED THE PROGRAM WITHIN 100% OF THE PUBLISHED LENGTH.

4“COMPLETION RATE” IS THE NUMBER OF GRADUATES DIVIDED BY THE NUMBER OF “STUDENTS AVAILABLE FOR GRADUATION”.

5“150% GRADUATES RATE” IS THE NUMBER OF STUDENTS WHO COMPLETED THE PROGRAM WITHIN 101%-150% OF THE PUBLISHED PROGRAM RATE.

6“150% COMPLETION RATE” IS THE PERCENTAGE OF STUDENTS WHO COMPLETED THE PROGRAM IN THE REPORTED CALENDAR YEAR WITHIN 101% -150% OF THE PUBLISHED LENGTH.

| Calendar Year | # OF GRADUATES 7 | GRADUATES AVAILABLE FOR EMPLOYMENT 8 | GRADUATES EMPLOYED IN THE FIELD 9 | PLACEMENT RATE 10 | GRADUATES EMPLOYED LESS THAN 32 HOURS PER WEEK | GRADUATES EMPLOYED MORE THAN 32 HOURS PER WEEK | STUDENT'S INITIALS BELOW: |
|---------------|-------------------------|---|--|--------------------------|--|--|---------------------------|
|---------------|-------------------------|---|--|--------------------------|--|--|---------------------------|

7“# OF GRADUATES” IS THE NUMBER OF STUDENTS WHO COMPLETED THE PROGRAM WITHIN 100% OF THE PUBLISHED LENGTH.

8“GRADUATES AVAILABLE FOR EMPLOYMENT” MEANS THE NUMBER OF GRADUATES MINUS THE NUMBER OF GRADUATES UNAVAILABLE FOR EMPLOYMENT. GRADUATES UNAVAILABLE FOR EMPLOYMENT MEANS GRADUATES WHO HAVE DIED, BECOME INCARCERATED, ARE CALLED TO ACTIVE MILITARY DUTY, OR ARE INTERNATIONAL STUDENTS WHO DO NOT HAVE A VISA ALLOWING EMPLOYMENT.

9“GRADUATES EMPLOYED IN THE FIELD” ARE GRADUATES WHO REPORT THAT THEY ARE EMPLOYED WITHIN SIX MONTHS OF GRADUATION IN A POSITION REQUIRING THE SKILLS THEY OBTAINED THROUGH THE EDUCATION PROVIDED BY THE SCHOOL.

10“PLACEMENT RATE” IS THE NUMBER OF EMPLOYED GRADUATES DIVIDED BY THE “GRADUATES AVAILABLE FOR EMPLOYMENT”.

| Calendar Year | # OF STUDENTS TAKING THE NCLEX | # OF STUDENTS PASSING THE NCLEX | # OF STUDENTS FAILING THE NCLEX | NCLEX PASSAGE RATE | STUDENT'S INITIALS BELOW: |
|---------------|--------------------------------|---------------------------------|---------------------------------|--------------------|---------------------------|
|---------------|--------------------------------|---------------------------------|---------------------------------|--------------------|---------------------------|

IN ORDER TO BECOME A LICENSED VOCATIONAL NURSE IN THE STATE OF CALIFORNIA, VOCATION NURSING GRADUATES MUST PASS THE NATIONAL COUNCIL LICENSE EXAM (NCLEX). THIS CHART SHOWS THE NUMBER OF GRADUATES WHO TOOK THE EXAM IN THE REPORTING YEAR, THE NUMBER WHO PASSED THE EXAMINATION, THE PASSAGE PERCENTAGE RATE, AND THE NUMBER WHO FAILED. YOU CAN ACCESS THE NCLEX EXAM PASS RATE INFORMATION AT http://www.bvnpt.ca.gov/education/vn_stats.shtml.

| Annual Salary and Wage Reported for Graduates Employed in the Field | BELOW \$30,000 | \$30,000 TO 34,999 | \$35,000 TO 39,999 | \$40,000 TO 44,999 | \$45,000 TO 49,999 | \$50,000 TO 54,999 | \$55,000 TO 59,999 | ABOVE \$60,000 |
|---|----------------|--------------------|--------------------|--------------------|--------------------|--------------------|--------------------|----------------|
|---|----------------|--------------------|--------------------|--------------------|--------------------|--------------------|--------------------|----------------|

“Annual Salary and Wage Reported for Graduates Employed in the Field” ARE THE ANNUAL SALARIES IN INCREMENTS OF \$5000.00 REPORTED BY THE GRADUATES WHO ARE EMPLOYED WITHIN SIX MONTHS OF GRADUATION IN A POSITION REQUIRING THE SKILLS THEY OBTAINED THROUGH THE EDUCATION PROVIDED BY THE SCHOOL.